

but not limited to, loss of use, loss of profits, loss of production, expense of substitute equipment or other commercial loss or damage.

Limitation of Liability: This limited warranty is in lieu of all other express warranties, obligations, or liabilities. Any implied warranties, obligations or liabilities, including, but not limited to, any implied warranty of merchantability shall be limited in duration to the applicable warranty period. Any action for breach of any warranties hereunder, including, but not limited to, any implied warranty of merchantability must be brought within the applicable warranty period.

Modifications of Warranty: No agent, representative, dealer, or employee of KisanKraft Limited or any of its manufacturers has the authority to increase or alter the obligations of this warranty.

Assignment / Transfer of warranty: The warranty cannot be assigned and shall not transfer if the product is resold by the first buyer. The above warranties are extended to the first end user (original purchaser), and no warranty is made, nor authorized to be made assignable on resale by the first end user.

What you must do to obtain limited warranty service: To obtain performance of any obligation under this warranty for failure during the applicable warranty period, you must deliver the defective product, to the nearest Authorized Dealer, along with proof-of-purchase (invoice/receipt). KisanKraft Limited, its manufacturers and its dealers reserve the right to inspect the claimed defective part(s) to determine if the malfunction is the result of a defect covered by this warranty. Please note that the decision of KisanKraft Limited with respect to any warranty claim is final.

After-sales Service (Including Warranty): KisanKraft Limited does not sell directly to consumers. All sales or supplies are made through Authorized Dealers. It is the responsibility of the Authorized Dealer to provide all after-sales service to consumers. Any warranty claim should be raised by dealer to KisanKraft Limited as per warranty policy.

Jurisdiction: All disputes are subject to Bangalore court's jurisdiction.

Notes:

- This purchase is not contingent upon a product demonstration. The purchaser shall satisfy himself with the product, including any product demonstration or verification of any function, before buying. KisanKraft Limited or its authorized dealers, including online sellers, shall not be liable to give any on-site demonstration after purchase of any of the product.
- Any product once used will not be taken back by KisanKraft Limited.
- Warranty and After Sale Services (including but not limited to installation, Demonstration, Repair, Routine Maintenance etc.), should be done through the Authorized Dealer selling this product.
- Dealers should have their own technician to provide After Sales Services to their Customers. KisanKraft Limited provides free training to Authorized Dealer's technicians at KisanKraft Limited's head office, on request from Authorized Dealer.

This warranty is null & void, if you fail to register the warranty with KisanKraft by sending the KisanKraft Copy with dealer's stamp.

KisanKraft Limited

Product	THERMAL FOGGING SPRAYER	KisanKraft Invoice Date	
Brand	KisanKraft	KisanKraft Invoice No.	
Model	KK-STF-480 , KK-STF-560		
WARRANTY PERIOD	6 MONTHS	FOR THE SPECIFIED PERIOD FROM THE DATE OF SALE OR DELIVERY WHICHEVER IS EARLIER.	
Dealer's Invoice Date		Dealer's Invoice No.	
Buyer's Info (Name, Address, Phone, etc.):		Dealer's Stamp (Address, Phone, TIN, etc.):	
Buyer's Sign		Dealer's Sign	

Warranty Policy

What is covered: KisanKraft Limited and its manufacturers warrant this product to be free from defects in material or workmanship. All parts defective in material and workmanship are covered. This warranty will only cover defects arising under normal usage.

This warranty is limited to repair or replacement by KisanKraft Limited or its manufacturers of such parts as appear to KisanKraft or its manufacturers, upon inspection, to be defective in material and/or workmanship. KisanKraft or its manufacturers make no warranty with respect to items not manufactured or sold by them. No onsite warranty is provided by KisanKraft Limited or its manufacturers. Defective items must be brought/sent to our Authorized Dealer or KisanKraft Limited's office for service.

What is not covered: The *warranty shall become null and void* and neither KisanKraft Limited nor any of its manufacturers, nor its authorized dealers assumes any responsibility, if the failure was caused by the following:

- (1) Operation of product with incorrect fuel or lubricants, (2) Incorrect usage of machine or misuse, (3) Lack of maintenance, (4) Negligence, (5) Accident or physical damage, (6) Repairs made by unauthorized parties and/or with unauthorized parts, (7) Improper set up, adjustments, tampering or altered products (8) Any modification to the product what-so-ever.

Important: (1) Normal maintenance and adjustments to the product is the responsibility of the customer. (2) Normal wear and tear are not covered under warranty. (3) Rubber/plastic parts and consumables such as blades, clutch and clutch-bell, sparkplugs, nylon line, air-filters, fuel-filters, oil seals and gaskets etc. are not covered under the warranty. (4) Electrical Motor, Electrical Parts, Battery Etc. are not covered under the warranty.

Incidental / Consequential Loss: KisanKraft Limited or its manufacturers will not be liable for general damages, including bodily injuries, or for incidental or consequential damages including, but not

limited to, loss of use, loss of profits, loss of production, expense of substitute equipment or other commercial loss or damage.

Limitation of Liability: This limited warranty is in lieu of all other express warranties, obligations, or liabilities. Any implied warranties, obligations or liabilities, including, but not limited to, any implied warranty of merchantability shall be limited in duration to the applicable warranty period. Any action for breach of any warranties hereunder, including, but not limited to, any implied warranty of merchantability must be brought within the applicable warranty period.

Modifications of Warranty: No agent, representative, dealer, or employee of KisanKraft Limited or any of its manufacturers has the authority to increase or alter the obligations of this warranty.

Assignment / Transfer of warranty: The warranty cannot be assigned and shall not transfer if the product is resold by the first buyer. The above warranties are extended to the first end user (original purchaser), and no warranty is made, nor authorized to be made assignable on resale by the first end user.

What you must do to obtain limited warranty service: To obtain performance of any obligation under this warranty for failure during the applicable warranty period, you must deliver the defective product, to the nearest Authorized Dealer, along with proof-of-purchase (invoice/receipt). KisanKraft Limited, its manufacturers and its dealers reserve the right to inspect the claimed defective part(s) to determine if the malfunction is the result of a defect covered by this warranty. Please note that the decision of KisanKraft Limited with respect to any warranty claim is final.

After-sales Service (Including Warranty): KisanKraft Limited does not sell directly to consumers. All sales or supplies are made through Authorized Dealers. It is the responsibility of the Authorized Dealer to provide all after-sales service to consumers. Any warranty claim should be raised by dealer to KisanKraft Limited as per warranty policy.

Jurisdiction: All disputes are subject to Bangalore court's jurisdiction.

Notes:

- This purchase is not contingent upon a product demonstration. The purchaser shall satisfy himself with the product, including any product demonstration or verification of any function, before buying. KisanKraft Limited or its authorized dealers, including online sellers, shall not be liable to give any on-site demonstration after purchase of any of the product.
- Any product once used will not be taken back by KisanKraft Limited.
- Warranty and After Sale Services (including but not limited to installation, Demonstration, Repair, Routine Maintenance etc.), should be done through the Authorized Dealer selling this product.
- Dealers should have their own technician to provide After Sales Services to their Customers. KisanKraft Limited provides free training to Authorized Dealer's technicians at KisanKraft Limited's head office, on request from Authorized Dealer.

Product	THERMAL FOGGING SPRAYER	KisanKraft Invoice Date	
Brand	KisanKraft	KisanKraft Invoice No.	
Model	KK-STF-480 , KK-STF-560		
WARRANTY PERIOD	6 MONTHS	FOR THE SPECIFIED PERIOD FROM THE DATE OF SALE OR DELIVERY WHICHEVER IS EARLIER.	
Dealer's Invoice Date		Dealer's Invoice No.	
Buyer's Info (Name, Address, Phone, etc.):		Dealer's Stamp (Address, Phone, TIN, etc.):	
Buyer's Sign		Dealer's Sign	

Warranty Policy

What is covered: KisanKraft Limited and its manufacturers warrant this product to be free from defects in material or workmanship. All parts defective in material and workmanship are covered. This warranty will only cover defects arising under normal usage.

This warranty is limited to repair or replacement by KisanKraft Limited or its manufacturers of such parts as appear to KisanKraft or its manufacturers, upon inspection, to be defective in material and/or workmanship. KisanKraft or its manufacturers make no warranty with respect to items not manufactured or sold by them. No onsite warranty is provided by KisanKraft Limited or its manufacturers. Defective items must be brought/sent to our Authorized Dealer or KisanKraft Limited's office for service.

What is not covered: The *warranty shall become null and void* and neither KisanKraft Limited nor any of its manufacturers, nor its authorized dealers assumes any responsibility, if the failure was caused by the following:

- (1) Operation of product with incorrect fuel or lubricants,
- (2) Incorrect usage of machine or misuse,
- (3) Lack of maintenance,
- (4) Negligence,
- (5) Accident or physical damage,
- (6) Repairs made by unauthorized parties and/or with unauthorized parts,
- (7) Improper set up, adjustments, tampering or altered products
- (8) Any modification to the product what-so-ever.

Important: (1) Normal maintenance and adjustments to the product is the responsibility of the customer. (2) Normal wear and tear are not covered under warranty. (3) Rubber/plastic parts and consumables such as blades, clutch and clutch-bell, sparkplugs, nylon line, air-filters, fuel-filters, oil seals and gaskets etc. are not covered under the warranty. (4) Electrical Motor, Electrical Parts, Battery Etc. are not covered under the warranty.

Incidental / Consequential Loss: KisanKraft Limited or its manufacturers will not be liable for general damages, including bodily injuries, or for incidental or consequential damages including,

This warranty is null & void, if you fail to register the warranty with KisanKraft by sending the KisanKraft Copy with dealer's stamp.

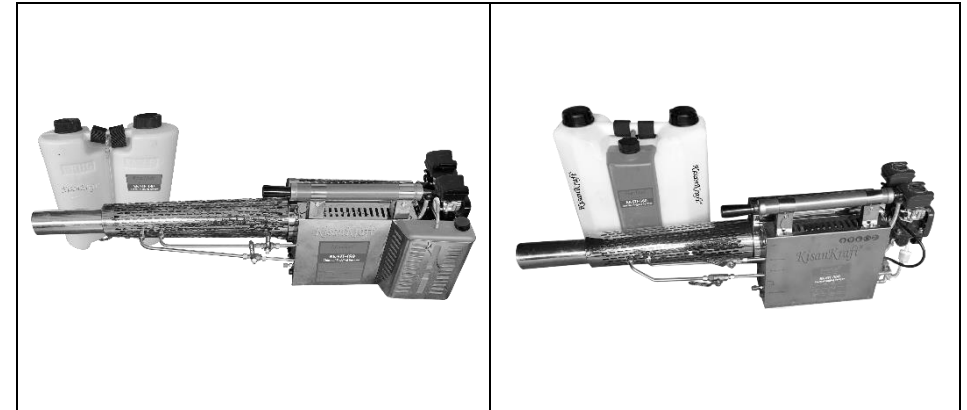
KisanKraft Limited



Wide Range of Products for Every Need



User Manual



KisanKraft Limited

Sri Huchhanna Tower, #4, 1st Main, 7-A Cross, Maruthi Layout, Dasarahalli,
HAF Post, Hebbal, Bangalore 560024, Karnataka, INDIA

- ◆ Bangalore (HO) ◆ Ahmedabad ◆ Bhopal ◆ Bhubaneswar ◆ Coimbatore ◆
Guwahati ◆ Hubli ◆ Hyderabad ◆ Nellore ◆ Jaipur ◆
Karnal ◆ Kolkata ◆ Lucknow ◆ Pune ◆ Raipur

For more information give **MISSED CALL: 07676065555**



Many of our products have BIS: ISI certification.



CONTENTS

Before Getting Started..... 7

Product Introduction 7

Performance characteristics 7

Before start..... 10

Safely shutdown procedure: 12

Regular maintenance and long-term storage..... 19

Technical Specification 23

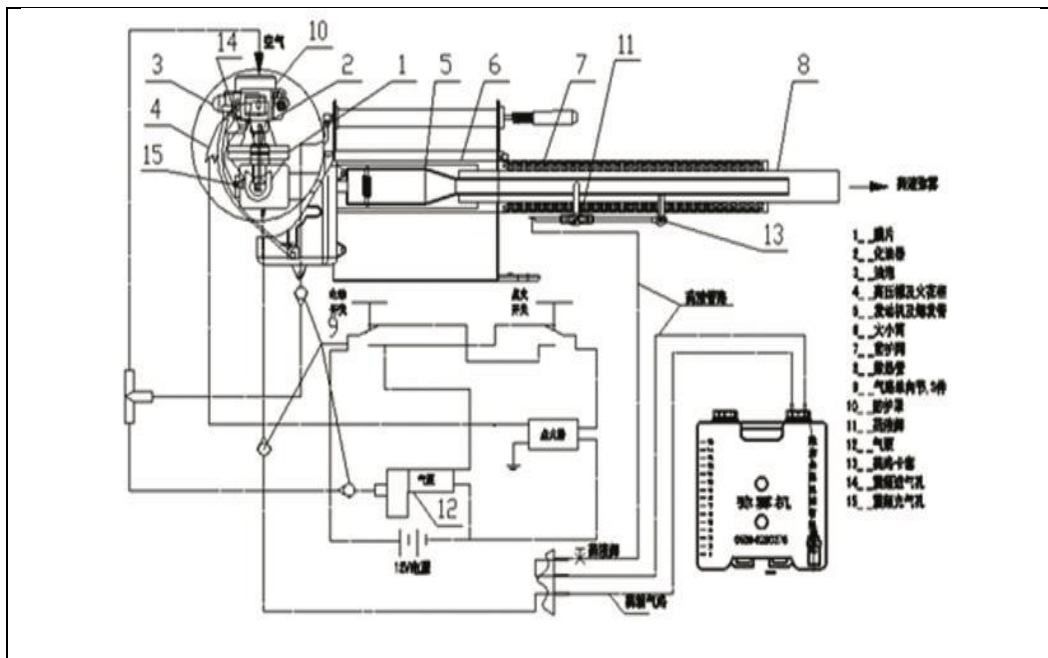
Part Diagram..... 24

KisanKraft has a large range of products to serve the farmers. A list of our products is given below:

<p>Brush Cutters and Accessories</p> <ul style="list-style-type: none"> Brush Cutter/Power Weeder Backpack Brush Cutter Tea Pruner Pole pruner with Engine Reaper Attachment Blades-Circular Blades (2 & 3 points) Baffle Nylon Rope Tap & Go <p>Chainsaws</p> <ul style="list-style-type: none"> Petrol Chainsaw Electric Chainsaw Chain Sharpening Machine <p>Engines and Water Pumps</p> <ul style="list-style-type: none"> Engine –Diesel-(Horizontal) Engine –Diesel(Vertical) Engine-Kerosene Water Pump with Petrol Engine Water Pump with Kerosene Engine Water Pump with Diesel Engine <p>Hand Tools</p> <ul style="list-style-type: none"> Secateurs Folding Saw Garden Rake Garden Shovel Hedge Shear Lopper Telescopic Hedge Shear Telescopic Lopping Shear Tree Pruner Telescopic Steel Pipe & Fruit Picker Bag Sheep Shear <p>Garden Tools</p> <ul style="list-style-type: none"> Electric Pressure Washer Hedge Trimmer Lawn Mower (Electric, Petrol & Manual) Leaf Blower 	<p>Cultivators and Accessories</p> <ul style="list-style-type: none"> Petrol and Diesel <p>Sprayers and Accessories</p> <ul style="list-style-type: none"> Battery Sprayer Portable Power Sprayer Trolley Sprayer Manual Knapsack Sprayer Manual Pressure Sprayer Rose Cans Hose Crimping Machine HTP Sprayer HTP Delivery Hose HTP Hose Reel HTP Stand HTP Gun / Lance(Brass Rod) Knapsack Power Sprayer Mister / Duster / Granuel Spreader HTP Sprayer Set with Diesel Engine HTP Sprayer Set with Kerosene Engine Fogging Machine <p>Milking Machine</p> <ul style="list-style-type: none"> Wood Shredder Fodder Ensiling Chaff Cutter Fodder Grinder Chaff Cutter Fodder Mini Chaff Cutter <p>Harvester</p> <ul style="list-style-type: none"> Maize Sheller Maize Sheller + Dehusker Maize Combine Harvester Onion Digger Carlotti Italy Tea Leaf Harvester Sugarcane Combine Harvester Sugarcane Leaf Stripper <p>Transplanter and Post Hole Digger</p> <ul style="list-style-type: none"> Paddy Transplanter (2 & 8 Rows) Transplanter-Vegetable & Tobacco Post Hole Digger(4” to 14” Augers)
--	---

Part Diagram

KK-STF-480/KK-STF-560



Product	THERMAL FOGGING SPRAYER	KisanKraft Invoice Date	
Brand	KisanKraft	KisanKraft Invoice No.	
Model	KK-STF-480 , KK-STF-560		
WARRANTY PERIOD	6 MONTHS	FOR THE SPECIFIED PERIOD FROM THE DATE OF SALE OR DELIVERY WHICHEVER IS EARLIER.	
Dealer's Invoice Date		Dealer's Invoice No.	
Buyer's Info (Name, Address, Phone, etc.):		Dealer's Stamp (Address, Phone, TIN, etc.):	
Buyer's Sign		Dealer's Sign	

Warranty Policy

What is covered: KisanKraft Limited and its manufacturers warrant this product to be free from defects in material or workmanship. All parts defective in material and workmanship are covered. This warranty will only cover defects arising under normal usage. This warranty is limited to repair or replacement by KisanKraft Limited or its manufacturers of such parts as appear to KisanKraft or its manufacturers, upon inspection, to be defective in material and/or workmanship. KisanKraft or its manufacturers make no warranty with respect to items not manufactured or sold by them. No onsite warranty is provided by KisanKraft Limited or its manufacturers. Defective items must be brought/sent to our Authorized Dealer or KisanKraft Limited's office for service.

What is not covered: The warranty shall become null and void and neither KisanKraft Limited nor any of its manufacturers, nor its authorized dealers assumes any responsibility, if the failure was caused by the following:

- (1) Operation of product with incorrect fuel or lubricants,
- (2) Incorrect usage of machine or misuse,
- (3) Lack of maintenance,
- (4) Negligence,
- (5) Accident or physical damage,
- (6) Repairs made by unauthorized parties and/or with unauthorized parts,
- (7) Improper set up, adjustments, tampering or altered products
- (8) Any modification to the product what-so-ever.

Important: (1) Normal maintenance and adjustments to the product is the responsibility of the customer. (2) Normal wear and tear are not covered under warranty. (3) Rubber/plastic parts and consumables such as blades, clutch and clutch-bell, sparkplugs, nylon line, air-filters, fuel-filters, oil seals and gaskets etc. are not covered under the warranty. (4) Electrical Motor, Electrical Parts, Battery Etc. are not covered under the warranty.

Incidental / Consequential Loss: KisanKraft Limited or its manufacturers will not be liable for general damages, including bodily injuries, or for incidental or consequential damages including, but not

limited to, loss of use, loss of profits, loss of production, expense of substitute equipment or other commercial loss or damage.

Limitation of Liability: This limited warranty is in lieu of all other express warranties, obligations, or liabilities. Any implied warranties, obligations or liabilities, including, but not limited to, any implied warranty of merchantability shall be limited in duration to the applicable warranty period. Any action for breach of any warranties hereunder, including, but not limited to, any implied warranty of merchantability must be brought within the applicable warranty period.

Modifications of Warranty: No agent, representative, dealer, or employee of KisanKraft Limited or any of its manufacturers has the authority to increase or alter the obligations of this warranty.

Assignment / Transfer of warranty: The warranty cannot be assigned and shall not transfer if the product is resold by the first buyer. The above warranties are extended to the first end user (original purchaser), and no warranty is made, nor authorized to be made assignable on resale by the first end user.

What you must do to obtain limited warranty service: To obtain performance of any obligation under this warranty for failure during the applicable warranty period, you must deliver the defective product, to the nearest Authorized Dealer, along with proof-of-purchase (invoice/receipt). KisanKraft Limited, its manufacturers and its dealers reserve the right to inspect the claimed defective part(s) to determine if the malfunction is the result of a defect covered by this warranty. Please note that the decision of KisanKraft Limited with respect to any warranty claim is final.

After-sales Service (Including Warranty): KisanKraft Limited does not sell directly to consumers. All sales or supplies are made through Authorized Dealers. It is the responsibility of the Authorized Dealer to provide all after-sales service to consumers. Any warranty claim should be raised by dealer to KisanKraft Limited as per warranty policy.

Jurisdiction: All disputes are subject to Bangalore court's jurisdiction.

Notes:





- This purchase is not contingent upon a product demonstration. The purchaser shall satisfy himself with the product, including any product demonstration or verification of any function, before buying. KisanKraft Limited or its authorized dealers, including online sellers, shall not be liable to give any on-site demonstration after purchase of any of the product.
- Any product once used will not be taken back by KisanKraft Limited.
- Warranty and After Sale Services (including but not limited to installation, Demonstration, Repair, Routine Maintenance etc.), should be done through the Authorized Dealer selling this product.
- Dealers should have their own technician to provide After Sales Services to their Customers. KisanKraft Limited provides free training to Authorized Dealer's technicians at KisanKraft Limited's head office, on request from Authorized Dealer.

- Gas defense mask 1pc
- Oil filling funnel 1 pc
- Carburetor diagram 2 pcs
- Tool kit 1 set
- Safety goggles 1 pc
- Pesticide filling Funnel 1 pc
- Sling 1 pc
- Check valve 1 pcs
- Earplug 1 pair

Technical Specification

Model	KK-STF-480	KK-STF-560
Outer Dimension (mm)	1100mm*280mm*375mm	
Fuel Used	Petrol	
Operation Mode	Manual & Electric	
Fuel Consumption	2.6 L/H	3.0 L/H
Net Weight (Kg)	11.5 Kg	8.5 Kg
Chemical Tank Capacity (L)	8*2 L SS	
Fuel Tank	2.0 L SS	2.5 L SS
Fogging Capacity	1.5 L/M	2.0 L/M
Battery	12V 2.6Ah	

depends when the diesel, pesticide and water mix together

No.	Si gn	Contents	Installing position
1		Gasoline in tank, no smoking or fire.	
2		Burning danger, any parts of your body away from the hot source.	Cover of combustion chamber
3		Fill the gasoline after machine stopped. No spilling of oil.	front wall of the
4		Wear protective clothes	Upper and front of the solution tank.

The smoke produced by gasoline combustion is dangerous. Take care!

Safety signs are attached to parts such as the cover of oil tank, combustion chamber and etc. The sign name and installing position is as the following:

Please operate the machine safely, take care to defend the gas and poison, fight the fire, and prevent all operating accidents. Pay attention to it from the thought, and be on the alert. Don't be careless and ensure your personal safety.

Auxiliaries

- Operating manual 1 pc
- Electricity charger 1 pc
- Carbon deposition cleaning bar 1 pc

Before Getting Started

Thank you for your purchase and use of our products. In order to avoid accidents or injury, **please read this manual carefully** before using the machine. After reading, preserve it for further reference.

.Warning Protective measures must be done before spraying operation, wearing gloves, masks and protective clothes etc. Violation of the provisions may result in danger and personal injury, which is not the company's responsibility

This machine is strictly prohibited to use strong corrosive drugs, such as; peroxide acetic acid, chlorine dioxide and etc. when it is occasionally used for above chemicals, the machine must be cleaned with water immediately.

Tips; this product design aims to continuously improve and innovate, the contents of the specification are subject to change without notice. The appearance of the product in this manual is only for reference.

Product Introduction

Thank you very much for using fogging machine product by our company. It is a new product independently researched and developed by the company, which is currently the world's most advanced product of its kind. It uses modern rocket technology, with maintenance free pulse jet engine, without any rotating parts in the whole machine and no need for lubrication system, whose character is simple structure, no wearing between components, low failure rate, long service life, easy maintenance, less fuel consumption, and high working efficiency. It is an ideal high-tech product for pesticide spraying, epidemic prevention and disinfection.

Performance characteristics

The fogging machine can be widely used for pesticide spraying for crops, economic forest, cotton, green house crops, sanitation and disinfection for warehouse, wharf, army camp, city underground waterways, farms, passenger cars, residential areas and city.

Characteristics:

1. High working efficiency, high killing rate, large spraying range, strong penetration and high safety factor.
2. All around working without power off, stable performance and reliable
3. High efficiency, pesticide-saving, low cost, good diffusibility and high adhesion.
4. Light weight and easy operation.

Characteristics when the machine is used in forestry and fruit trees:

1. Drug-saving and less pollution: due to the small drug particle size and sufficient effect, the pesticide and water usage is greatly reduced, which is good to be used

- in the water shortage area such as the mountains, hills, plateau and etc.,
- 2. High insecticide efficiency: The special diffusion agent specially developed for smoke and mist sprayer by the company has very good sterilizing effect, it has the advantage of strong adhesion, good anti-rain erosion, weathering resistance and large diffusion area etc. For example, it can be used for the fruit rot, canker, pear scab, anthracnose, aphids' moth and whitefly, Botrytis cinereal and downy mildew, early blight, late blight, cotton bollworm, leafhopper, and red spider etc., and is suitable for use with a variety of pesticides (foliar fertilizer, pesticides, sterilization powder, and etc.)
- 3. To increase the temperature: in spring, when the crops is sprouting and flowering, the spraying smoke can increase the surface temperature to prevent flower freezing and increase the yield and income.
- 4. Large spraying area and long distance: the flat spray area is large, and the spraying smoke can reach more than 50 meters far. With small particle size and strong penetration, it is suitable for high stem and density plants such as tea plantations, forest, fruit trees, the wheat in middle and later periods, cotton, maize, and rice etc..
- 5. The city hygiene and disease control, sanitation and transportation: suitable for hotels, parks, residential property, city underpass, garbage dump, toilet, container, and warehouse etc. to kill the "four pests". It is also used for disinfection and sterilization of vehicles, such as stations, docks, passenger ships, trains, automobiles, aircraft, and etc.

Characteristics when it is used in greenhouse:

- 1. Saving time and effort: one 100-meter-long greenhouse can be sprayed in 10 minutes.
- 2. Quickly become effective: fine particles produced by the machine has strong penetrating power, which can directly penetrate through the plant canopy, insecticidal and bactericidal, without dead space.
- 3. With sustained effect and the temperature can be raised. The drug particles of 05-10 microns stay long time (2-8 hours floating in the air) in greenhouse when temperature is too low in winter, the greenhouse temperature can be increased. Therefore, the machine can be used to improve the temperature of the greenhouse (the flame sprayed by the machine can increase the air temperature)
- 4. To decrease the temperature and increase production and income: The water consumption of the machine is very small, and the spraying of pesticides can be done also in rainy days, which does not affect the growth of crops.
- 5. To save the drug with less residue: The fine drug particles atomized by the machine spray very even, is the most ideal machinery to develop the green and non-pollution vegetables in nowadays.

1, The machine is mainly composed of four parts: water circuit, electrical circuit, gas circuit and oil circuit, including carburetor, engine and explosion tube, frame, fuel tank, pesticide tank and pipeline.

- 1. Spraying time: before sunrise and after sunset with no wind or with breeze.
- 2. Weather: air humidity between 30-80%, temperature below 35 °C **(the lower**

The temperature, the higher the humidity, the better the effect of spraying).

- 3. For crops lower than 5 meters, the pesticide can be blended with water for spraying mist. Generally with pesticide/water ratio of 1:5 to 1:10, the solution with amount equals to 150kg of water to be filled to the solution tank of 15-30kg, can complete the spraying work of one acre of land, whose spraying and diffusing length can reach more than 10 meters. **(In case of more pests in the land, more solutions shall be used and longer distance and more areas will be covered.)**

B. (Diesel smoke spraying) formulating method on non-edible crops (the following method is only for reference, as the case might be)

The spraying and diffusing length can reach 50 meters, with no wind or with breeze.

Blending order:

- 1. First mix the diesel diffusion agent with diesel and stir to uniform mixture, then add water and pesticide. The mixture shall be fully dissolved before use. In mist spraying,
- 2. open the water valve to position of 1/3- 2/3, switch gear 1 and 2 uniformly to small opening, until the spraying is even and no flameout happens.

Proportioning method:

1, Blend (diesel emulsifier or agricultural organosilicon) and diesel according to the ratio of 1:15 (the total amount of diesel covers 10% - 20% of the oil tank capacity). The mist concentration shall be regulated according to the water/diesel ratio. The pesticide with amount of 10% oil tank capacity shall mix with water of 70% - 80% tank capacity, stirred to uniform mixture and ready for use.

2. With diesel of 12-15 kg, pesticide of 5-6 kg, organosilicon of 200-300ml added to the tank, the rest will be filled with water. The amount of organosilicon to be added



(2) Clean the carbon deposition on various parts.

(3) Empty the oil and pesticide solution, clean the solution tank and pipe with boiling water to check if the pipe is blocked.

(4) Check the pipes and screws to see if there is any loose or fallen off.

(5) Check the ignition system, to ensure the cable and connections is good and ignition needle works well.



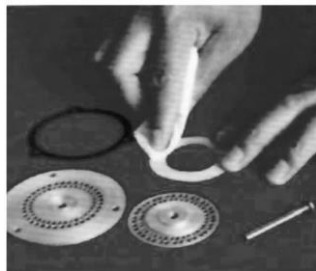
4. Maintenance per 500 hours (according to the machine running hours)

Dismantle the whole machine (except the carburetor chamber) to clean and check, including the wearing parts and sealing. If there is any parts damaged or worn, it shall be repaired or replaced.



(b) **Long term storage** Empty the fuel tank.

1. Clean the gas intake diaphragm, and reassemble them.
2. Clean the pesticide solution tank and pipe with boiling water.
3. Clean the carbon deposition on all various parts, and recharge the battery.(Recharge once every 4 months for a long time no use).
4. Clean every parts.
5. Check each part, replace the damaged parts timely.
6. Store the machine in a ventilated and dry warehouse.



A. Application on forestry and fruit trees (spraying mist):

2, working principle:

Fogging machine uses gasoline as fuel, when it is started, the high temperature and high-pressure gas flow at high speed generated by the engine sprays from the pulse nozzle. When the pesticide valves is opened, the pressure in the pesticide tank presses the drug into the pipe to meet the high temperature and high speed flow. At the moment of meeting, the drug solution is atomized into smoke and jetted out from the nozzle, and quickly spread and diffuse. When the object is exposed to the mist or smoke, it will be killed.

1. Working environment: temperature between -1 O°c degrees to 35°C, air humidity 80% - 30%
 2. Spraying amount: 20-120L/h.
 3. Pesticide solution tank volume: 7L /15L 4, Fuel tank volume: 1.5L / 2.0L
 - 4...The weight of the whole machine: 6.5-11.5Kg
 - 5., Outline dimension (length, width and height): 960/1150*260*315 (mm) 7, 6.The fuel to be used: gasoline (93# or above lead-free gasoline, not to add any lubricant agent)
 7. Fuel consumption: 1.2L/h & 3.0L/h
- , Ignition power: 12V rechargeable batteries

Before start

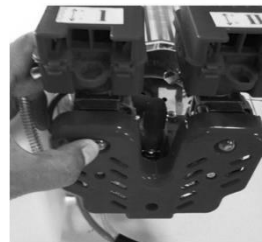
- 1) To ensure no onlookers or other animals nearby;
- 2) The machine is prohibited to face directly the human, animal and plant.
- 3) The machine shall be started in a flat space without flammable and explosive materials within a radius of 2 meters from the nozzle.
- 4) The machine must be at least 3 meters away from the refueling site;

Preparation

- 1) Check and confirm the battery is charged and the circuit is in good condition.
- 2) The fuel tank (recommend to fill 93# or above lead-free gasoline, which can prevent the blockage of the carburetor) is not more than 80% full.
- 3) The pesticide solution tank is filled with the well mixed pesticide solution (the cover must be tightened).

Start

2-1 , When the machine is used for the first time, each of the oil bubble need to be pressed 7-8 times until the oil bubble is filled with 2/3 of the gasoline (Note: when the machine is used again and there is oil in the oil bubble and pipeline, skip this step directly to the next step).



, Switch the electric switch to "ON" position, gently press oil bubble of 1# carburetor, and long press the start button (Note: the start button need to be long pressed, not intermittently) until the machine is started. Note: After spraying is completed, to restart the machine, just press one oil bubble, and then press the start button gently to start. **Don't press two oil bubbles or press one oil bubble many times when there**

Regular maintenance and long-term storage

(a) Regular maintenance

1. Daily maintenance (/shift)

- (1) Clean up the oil and dust on the surface of the gasoline engine.
- (2) Strict filtration before the oil or pesticide solution is filled, keep the filling appliance clean, to prevent sundries into the fuel tank and the solution tank.
- (3) For both oil and pesticide solutions, check whether the pipe connection leaks, whether the pipe is open.

2. Maintenance per 50 hours (according to the machine running hours)

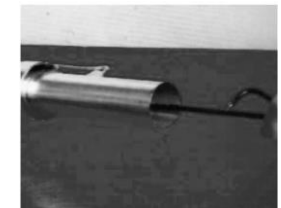
- (1) Complete daily maintenance work.
- (2) Clean oil tank.
- (3) Clean the pesticide solution tank.

Clean the tank with boiling water: add 500ml-2000ml of boiling water to the tank, shake the tank emphatically and open the valve to empty the water into the container. The cleaning water is handled according to the instructions of pesticide manufacturer.

- (4) Clean the carbon deposition on the nozzle, carburetor chamber and ignition needle, and clean the inlet valve.

Be careful!

Please do not disassemble carburetor chamber. For its maintenance, please contact professional service people. If there is problem with it, please contact the dealer or service network station.



3 Maintenance per 100 hours (according to the machine running hours)

- (1) complete the maintenance work per 50 hours;



6-4 Mist or smoke too small or no mist

1, Check the solution tank cover is tightened and the sealing ring inside the cover does not fall off.

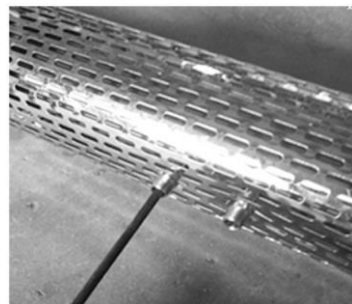


2. Check the check valve of the solution tank gas Inlet is not damaged. **(Note: do not install it in wrong way. the principle is: the gas goes into the solution tank from the machine and not return back.)**

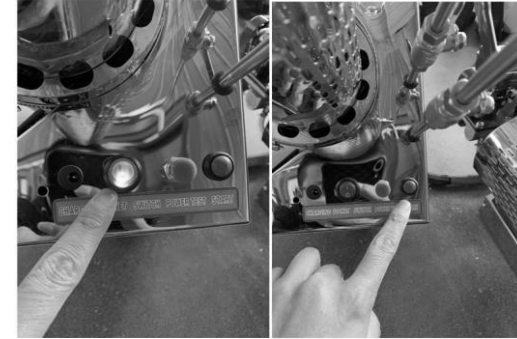


3. Check if the pipeline and the solution inlet screw is blocked.

Note: if you have any other questions, please contact the manufacturer



is oil in two bubbles, otherwise the machine won't be started due to too much oil



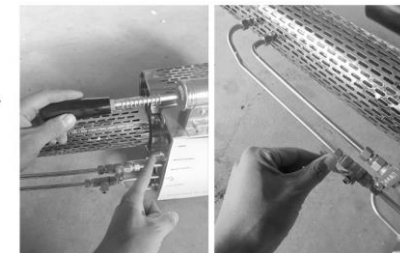
3-3. If the machine is not started, repeat step 3. When the machine is started, open the solution valve to start spraying (water cooling type: first open water tank valve and then open the solution tank valve. Both valves cannot fully open, only 1/3, Max. 1/2.). **Note: before the machine is started, both valves must be closed. Before turning off, both valves must be closed.**

3-4 Gas tube starting method:

A. Before the machine is started, press the test power to check if there is squeak sound of the ignition needle. When the sound is normal, the machine can be started.

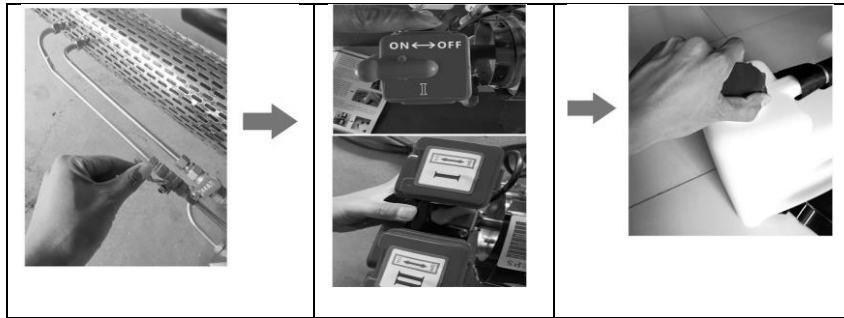


b. To long press the test power with one hand, to pull the gas tube from slow to fast to inflate by the other hand, the sound of machine starting can be heard after about pulling 5-6 times. Don't release the test power before the machine is started. Then stop pulling, open the solution valve and start to spray.



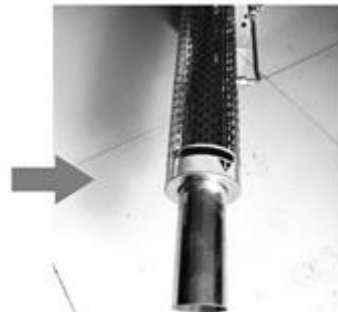
Safely shutdown procedure:

After the work is completed, first close the solution valve, and then switch off gear 1 and 2. After power off, open one solution box cover to release the excessive gas in the shortest time

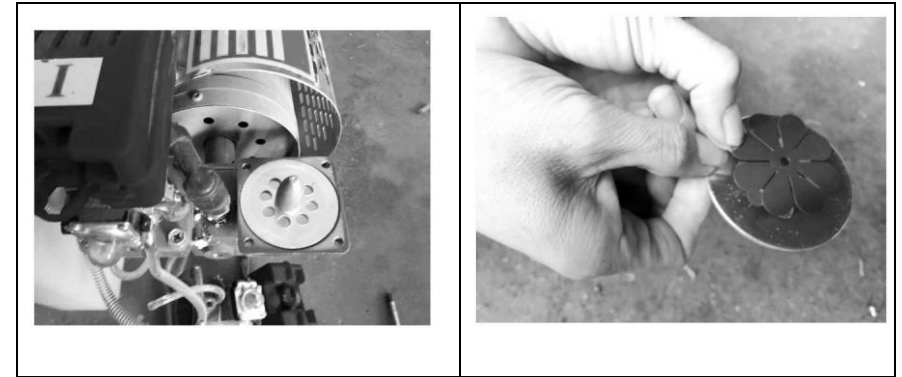


5. Notes in operation of the machine:

5-1. If the oil bubble is pressed too many times in case there is oil in the bubble, which leads to too much oil in the carburetor, you need to bring the machine with the nozzle downwards to poured out the extra petrol. Then the machine can be started directly without pressing the oil bubble.



5-2 In the shutdown, if the solution valve is dose usually the rrla;r111le is accidentally turned off, it will cause the solution return to the machine, and the machine does not work. In this case, do not immediately start the machine again, otherwise the machine will be damaged due to short circuit of the high-voltage bag. Bring the machine with the nozzle downwards to pour out the extra petrol. And then start the machine.



6-2 No oil to the carburetor

1, Press the start button, at the same time gently continuously press the oil bubble, the machine can be started

2. If step 1 is not successful, screw off the bolt of oil / gas mixing ratio of gear 1 and 2, Clean the bottom of the oil/gas mixing ratio.

Hole with carburetor cleaning agent.
Cleaning 5-6 times is enough. . After cleaning the screw, tighten the screw, which means rotate it two and a half rounds counterclockwise. (Note: do not tighten too much to break it)



6- 3, Machine sound and spraying mist not stable.

When the mist or smoke is not stable,

Please adjust the oil/ gas mixing ratio screw of carburetor counterclockwise, to regulate it and make it stable.



13. The operator must wear labor protection appliance according to the following requirements. (See Figure3):

- A. he must wear working clothes: the work wear must be applicable, which can not interfere with the action. Do not wear skirts, coats, scarves, ties and jewelry; B.he must wear protective gloves;
- C. he must wear protective shoes;
- D. he must wear a safety helmet;
- E. he must wear a gas defensive mask;
- F. He must wear ear protectors (especially when working for a long time).

14, when the machine works, nobody is allowed to enter the work area of danger.

15. The machine must be stopped before the operator leaves. It is not allowed to keep the machine running with the operator left.

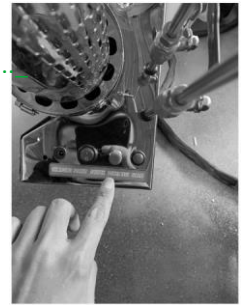
16. In the spraying process, the distance between the nozzle and crops shall be more than 0.5 meters. The spraying in one direction to the crops shall not be longer than 3 seconds

17. The pesticide solution should be prepared for immediate consumption, don't do it in advance.

18. The treatment of pesticides should comply with the safety instructions provided by the manufacturer.

19.The use of special working fluid is prohibited.

5-3 When the outside temperature is too Low, the machine will power off instantaneously In this case, you need to long press the start button after the machine is started, and open the solution valve meanwhile until the machine works normally.



6, Notes

1. The machine is strictly prohibited to be used in flammable and explosive places.
2. The machine uses gasoline as fuel, attention should be paid to fire fighting. Ignition and smoking is strictly prohibited near the machine.
3. It is strictly prohibited to open the carburetor to check igniter ignition.
4. The oil tank cover should be tightened after the oil is filled, the leakage of fuel should be cleaned, and the machine should be started far away from the refueling site.
5. It is prohibited to fill or dump the oil when the machine is in operation or just stopped.
6. In operation, the high temperature parts cannot touch people or animals, to avoid accidental injury, see figure 2. Forcibly cooling with water after the machine is stopped is strictly prohibited, which can seriously damage the machine.
7. For the health of operators, when working in the field, the operator should stand in the uptake of the nozzle to operate, and should not walk along the direction of the wind. When working indoors, the operator should spray from the inside to the outside. When the operator comes to the door, he stops the machine, and closes the door after coming out from the room to ensure the personal safety and effective killing of the insect or virus.
8. It is prohibited to use electric arc or acetylene welding method for welding

or cutting on the machine with pesticides or gasoline residues. When the oil tank or pesticide solution tank leaks, please contact the dealer or professional after-sales service personnel to handle.

9. When the residual pesticides or washing liquid of the pesticide tank is handled, please follow the safety instructions provided by the pesticides manufacturer.
10. After the machine completes its work, please close the pesticide solution valve and then turn off the engine, or do both actions at the same time; if the engine unexpectedly flameout, please close the valve quickly.
11. Empty the fuel inside the oil tank and carburetor before the machine is stored. For products of electrical series, the pesticide tank and pump shall be cleaned with clean water, and the machine shall be cleaned also, then place the machine in ventilated place away from fire. For long time storing, the machine should be charged every 30 days and each time for 5 hours.
12. The machine should be placed in a place away from children, to avoid accidents.
13. The operator must wear labor protection appliance according to the following requirements. (See Figure3):
 - A. He must wear working clothes: the work wear must be applicable, which can not interfere with the action. Do not wear skirts, coats, scarves, ties and jewelry; he must wear protective gloves.
 - B. He must wear protective shoes.
 - C. He must wear a safety helmet.
 - D. He must wear a gas defensive mask.
 - E. The must wear ear protectors (especially when working for a long time).

14. When the machine works, nobody is allowed to enter the work area of danger.
15. The machine must be stopped before the operator leaves. It is not allowed to keep the machine running with the operator left.
16. In the spraying process, the distance between the nozzle and crops shall be more than 0.5 meters. The spraying in one direction to the crops shall not be longer than 3 seconds
17. The pesticide solution should be prepared for immediate consumption, don't do it in advance.
18. The treatment of pesticides should comply with the safety instructions provided by the manufacturer.
- 19 The use of special working fluid is prohibited.
8. It is prohibited to use electric arc or acetylene welding method for welding or cutting on the machine with pesticides or gasoline residues. When the oil tank or pesticide solution tank leaks, please contact the dealer or professional after-sales service personnel to handle.
- 9 When the residual pesticides or washing liquid of the pesticide tank is handled, please follow the safety instructions provided by the pesticides manufacturer.
- 10, After the machine completes its work, please close the pesticide solution valve and then turn off the engine, or do both actions at the same time; if the engine unexpectedly flameout, please close the valve quickly.
- 11, Empty the fuel inside the oil tank and carburetor before the machine is stored. For products of electrical series, the pesticide tank and pump shall be cleaned with clean water, and the machine shall be cleaned also, then place the machine in ventilated place away from fire. For long time storing, the machine should be charged every 30 days and each time for 5 hours.
- 12 The machine should be placed in a place away from children, to avoid accidents.