

including, but not limited to, loss of use, loss of profits, loss of production, expense of substitute equipment or other commercial loss or damage.

Limitation of Liability: This limited warranty is in lieu of all other express warranties, obligations, or liabilities. Any implied warranties, obligations or liabilities, including, but not limited to, any implied warranty of merchantability shall be limited in duration to the applicable warranty period. Any action for breach of any warranties hereunder, including, but not limited to, any implied warranty of merchantability must be brought within the applicable warranty period.

Modifications of Warranty: No agent, representative, dealer, or employee of KisanKraft Limited or any of its manufacturers has the authority to increase or alter the obligations of this warranty.

Assignment / Transfer of warranty: The warranty cannot be assigned and shall not transfer if the product is resold by the first buyer. The above warranties are extended to the first end user (original purchaser), and no warranty is made, nor authorized to be made assignable on resale by the first end user.

What you must do to obtain limited warranty service: To obtain performance of any obligation under this warranty for failure during the applicable warranty period, you must deliver the defective product, to the nearest Authorized Dealer, along with proof-of-purchase (invoice/receipt). KisanKraft Limited, its manufacturers and its dealers reserve the right to inspect the claimed defective part(s) to determine if the malfunction is the result of a defect covered by this warranty. Please note that the decision of KisanKraft Limited with respect to any warranty claim is final.

After-sales Service (Including Warranty): KisanKraft Limited does not sell directly to consumers. All sales or supplies are made through Authorized Dealers. It is the responsibility of the Authorized Dealer to provide all after-sales service to consumers. Any warranty claim should be raised by dealer to KisanKraft Limited as per warranty policy.

Jurisdiction: All disputes are subject to Bangalore court's jurisdiction.

Notes:

- This purchase is not contingent upon a product demonstration. The purchaser shall satisfy himself with the product, including any product demonstration or verification of any function, before buying. KisanKraft Limited or its authorized dealers, including online sellers, shall not be liable to give any on-site demonstration after purchase of any of the product.
- Any product once used will not be taken back by KisanKraft Limited.
- Warranty and After Sale Services (including but not limited to installation, Demonstration, Repair, Routine Maintenance etc.), should be done through the Authorized Dealer selling this product.
- Dealers should have their own technician to provide After Sales Services to their Customers. KisanKraft Limited provides free training to Authorized Dealer's technicians at KisanKraft Limited's head office, on request from Authorized Dealer.

This warranty is null & void, if you fail to register the warranty with KisanKraft by sending the KisanKraft Copy with dealer's stamp.

Product	Agricultural Brush Cutter	KisanKraft Invoice Date	
Brand	KisanKraft	KisanKraft Invoice No.	
Model	☐ KK-BC-7652		
WARRANTY PERIOD	6 MONTHS	FOR THE SPECIFIED PERIOD FROM THE DATE OF SALE OR DELIVERY WHICHEVER IS EARLIER.	
Dealer's Invoice Date		Dealer's Invoice No.	
Buyer's Info (Name, Address, Phone, etc.):		Dealer's Stamp (Address, Phone, TIN, etc.):	
Buyer's Sign		Dealer's Sign	

Warranty Policy

What is covered: KisanKraft Limited and its manufacturers warrant this product to be free from defects in material or workmanship. All parts defective in material and workmanship are covered.

This warranty will only cover defects arising under normal usage.

This warranty is limited to repair or replacement by KisanKraft Limited or its manufacturers of such parts as appear to KisanKraft or its manufacturers, upon inspection, to be defective in material and/or workmanship. KisanKraft or its manufacturers make no warranty with respect to items not manufactured or sold by them. No onsite warranty is provided by KisanKraft Limited or its manufacturers. Defective items must be brought/sent to our Authorized Dealer or KisanKraft Limited's office for service.

What is not covered: The *warranty shall become null and void* and neither KisanKraft Limited nor any of its manufacturers, nor its authorized dealers assumes any responsibility, if the failure was caused by the following:

- (1) Operation of product with incorrect fuel or lubricants, (2) Incorrect usage of machine or misuse, (3) Lack of maintenance, (4) Negligence, (5) Accident or physical damage, (6) Repairs made by unauthorized parties and/or with unauthorized parts, (7) Improper set up, adjustments, tampering or altered products (8) Any modification to the product what-so-ever.

Important: (1) Normal maintenance and adjustments to the product is the responsibility of the customer. (2) Normal wear and tear are not covered under warranty. (3) Rubber/plastic parts and consumables such as blades, clutch and clutch-bell, sparkplugs, nylon line, air-filters, fuel-filters, oil seals and gaskets etc. are not covered under the warranty. (4) Electrical Motor, Electrical Parts, Battery Etc. are not covered under the warranty.

Incidental / Consequential Loss: KisanKraft Limited or its manufacturers will not be liable for general damages, including bodily injuries, or for incidental or consequential damages including, but not limited to, loss of use, loss of profits, loss of production, expense of substitute equipment or other commercial loss or damage.

Limitation of Liability: This limited warranty is in lieu of all other express warranties, obligations, or liabilities. Any implied warranties, obligations or liabilities, including, but not limited to, any implied warranty of merchantability shall be limited in duration to the applicable warranty period. Any action for breach of any warranties hereunder, including, but not limited to, any implied warranty of merchantability must be brought within the applicable warranty period.

Modifications of Warranty: No agent, representative, dealer, or employee of KisanKraft Limited or any of its manufacturers has the authority to increase or alter the obligations of this warranty.

Assignment / Transfer of warranty: The warranty cannot be assigned and shall not transfer if the product is resold by the first buyer. The above warranties are extended to the first end user (original purchaser), and no warranty is made, nor authorized to be made assignable on resale by the first end user.

What you must do to obtain limited warranty service: To obtain performance of any obligation under this warranty for failure during the applicable warranty period, you must deliver the defective product, to the nearest Authorized Dealer, along with proof-of-purchase (invoice/receipt). KisanKraft Limited, its manufacturers and its dealers reserve the right to inspect the claimed defective part(s) to determine if the malfunction is the result of a defect covered by this warranty. Please note that the decision of KisanKraft Limited with respect to any warranty claim is final.

After-sales Service (Including Warranty): KisanKraft Limited does not sell directly to consumers. All sales or supplies are made through Authorized Dealers. It is the responsibility of the Authorized Dealer to provide all after-sales service to consumers. Any warranty claim should be raised by dealer to KisanKraft Limited as per warranty policy.

Jurisdiction: All disputes are subject to Bangalore court's jurisdiction.

Notes:

- This purchase is not contingent upon a product demonstration. The purchaser shall satisfy himself with the product, including any product demonstration or verification of any function, before buying. KisanKraft Limited or its authorized dealers, including online sellers, shall not be liable to give any on-site demonstration after purchase of any of the product.
- Any product once used will not be taken back by KisanKraft Limited.
- Warranty and After Sale Services (including but not limited to installation, Demonstration, Repair, Routine Maintenance etc.), should be done through the Authorized Dealer selling this product.
- Dealers should have their own technician to provide After Sales Services to their Customers. KisanKraft Limited provides free training to Authorized Dealer's technicians at KisanKraft Limited's head office, on request from Authorized Dealer

Product	Agricultural Brush Cutter & Tea Pruner & Shoulder Mounted Brush Cutter	KisanKraft Invoice Date	
Brand	KisanKraft	KisanKraft Invoice No.	
Model	□ KK-BC-7652		
WARRANTY PERIOD	6 MONTHS	FOR THE SPECIFIED PERIOD FROM THE DATE OF SALE OR DELIVERY WHICHEVER IS EARLIER.	
Dealer's Invoice Date		Dealer's Invoice No.	
Buyer's Info (Name, Address, Phone, etc.):		Dealer's Stamp (Address, Phone, TIN, etc.):	
Buyer's Sign		Dealer's Sign	

Warranty Policy

What is covered: KisanKraft Limited and its manufacturers warrant this product to be free from defects in material or workmanship. All parts defective in material and workmanship are covered.

This warranty will only cover defects arising under normal usage.

This warranty is limited to repair or replacement by KisanKraft Limited or its manufacturers of such parts as appear to KisanKraft or its manufacturers, upon inspection, to be defective in material and/or workmanship. KisanKraft or its manufacturers make no warranty with respect to items not manufactured or sold by them. No onsite warranty is provided by KisanKraft Limited or its manufacturers. Defective items must be brought/sent to our Authorized Dealer or KisanKraft Limited's office for service.

What is not covered: The *warranty shall become null and void* and neither KisanKraft Limited nor any of its manufacturers, nor its authorized dealers assumes any responsibility, if the failure was caused by the following:

- (1) Operation of product with incorrect fuel or lubricants, (2) Incorrect usage of machine or misuse, (3) Lack of maintenance, (4) Negligence, (5) Accident or physical damage, (6) Repairs made by unauthorized parties and/or with unauthorized parts, (7) Improper set up, adjustments, tampering or altered products (8) Any modification to the product what-so-ever.

Important: (1) Normal maintenance and adjustments to the product is the responsibility of the customer. (2) Normal wear and tear are not covered under warranty. (3) Rubber/plastic parts and consumables such as blades, clutch and clutch-bell, sparkplugs, nylon line, air-filters, fuel-filters, oil seals and gaskets etc. are not covered under the warranty. (4) Electrical Motor, Electrical Parts, Battery Etc. are not covered under the warranty.

Incidental / Consequential Loss: KisanKraft Limited or its manufacturers will not be liable for general damages, including bodily injuries, or for incidental or consequential damages

This warranty is null & void, if you fail to register the warranty with KisanKraft by sending the KisanKraft Copy with dealer's stamp.



Wide Range of Products for Every Need



User Manual



KisanKraft Limited

Warehouse: 818 3B1 to 818 3B18, Podalakur - Sangam Road, Prabagiripatnam, Podalakur, Nellore - 524345, Andhra Pradesh, INDIA

Head Office: #4, 1st Main, 7-A Cross, Maruthi Layout, Dasarahalli, HAF Post, Hebbal, Bangalore 560024, Karnataka, INDIA

- ◆ Bangalore (HO) ◆ Ahmedabad ◆ Bhopal ◆ Bhubaneswar ◆ Coimbatore
- ◆ Guwahati ◆ Hubli ◆ Hyderabad ◆ Jaipur ◆ Karnal
- ◆ Kolkata ◆ Lucknow ◆ Nellore ◆ Pune ◆ Raipur

For more information give **MISSED CALL: 07676065555**



Many of our products have BIS: ISI certification.



Scan the QR code to download
KisanKraft App

App is available on Google Play



Scan the QR code for
KisanKraft Youtube Channel

YouTube

CONTENTS

BEFORE GETTING STARTED 7

SAFETY INSTRUCTIONS 8

Application 13

Product overview 14

FOR SAFE OPERATION 15

ASSEMBLY 17

OPERATION 21

OPERATION 22

MAINTENANCE 23

TRANSPORTATION 27

TROUBLESHOOTING 27

TEHKNICAL SPECIFICATIONS 29

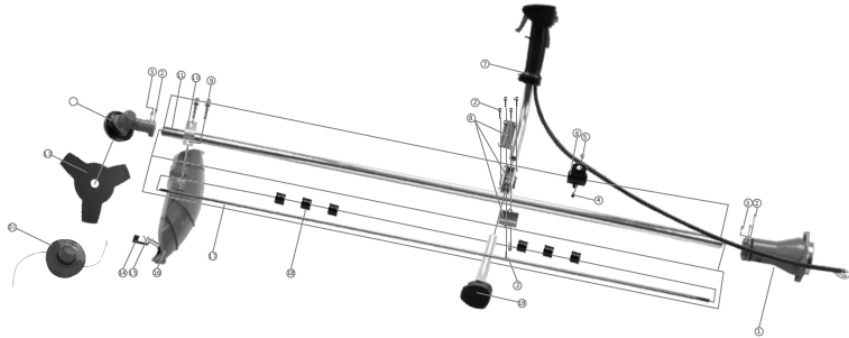
ENGINE-DIAGRAM & PARTS LIST-KK-BC-7652 30

Part diagram of Brush Cutter 32

KisanKraft has a large range of products to serve the farmers. A list of our products is given below:

<p>Brush Cutters and Accessories</p> <ul style="list-style-type: none"> Brush Cutter/Power Weeder Backpack Brush Cutter Tea Pruner Pole pruner with Engine Reaper Attachment Blades-Circular Blades (2 &3 points) Baffle Nylon Rope Tap & Go <p>Chainsaws</p> <ul style="list-style-type: none"> Petrol Chainsaw Electric Chainsaw Chain Sharpening Machine <p>Engines and Water Pumps</p> <ul style="list-style-type: none"> Engine –Diesel-(Horizontal) Engine –Diesel(Vertical) Engine-Kerosene Water Pump with Petrol Engine Water Pump with Kerosene Engine Water Pump with Diesel Engine <p>Hand Tools</p> <ul style="list-style-type: none"> Secateurs Folding Saw Garden Rake Garden Shovel Hedge Shear Lopper Telescopic Hedge Shear Telescopic Lopping Shear Tree Pruner Telescopic Steel Pipe & Fruit Picker Bag Sheep Shear <p>Garden Tools</p> <ul style="list-style-type: none"> Electric Pressure Washer Hedge Trimmer Lawn Mower (Electric, Petrol & Manual) Leaf Blower 	<p>Cultivators and Accessories</p> <ul style="list-style-type: none"> Petrol and Diesel <p>Sprayers and Accessories</p> <ul style="list-style-type: none"> Battery Sprayer Portable Power Sprayer Trolley Sprayer Manual Knapsack Sprayer Manual Pressure Sprayer Rose Cans Hose Crimping Machine HTP Sprayer HTP Delivery Hose HTP Hose Reel HTP Stand HTP Gun / Lance(Brass Rod) Knapsack Power Sprayer Mister / Duster / Granuel Spreader HTP Sprayer Set with Diesel Engine HTP Sprayer Set with Kerosene Engine Fogging Machine <p>Milking Machine</p> <ul style="list-style-type: none"> Wood Shredder Fodder Ensiling Chaff Cutter Fodder Grinder Chaff Cutter Fodder Mini Chaff Cutter <p>Harvester</p> <ul style="list-style-type: none"> Maize Sheller Maize Sheller + Dehusker Maize Combine Harvester Onion Digger Carlotti Italy Tea Leaf Harvester Sugarcane Combine Harvester Sugarcane Leaf Stripper <p>Transplanter and Post Hole Digger</p> <ul style="list-style-type: none"> Paddy Transplanter (2 & 8 Rows) Transplanter-Vegetable & Tobacco Post Hole Digger(4" to 14" Augers)
---	---

Part diagram of Brush Cutter.



SL.No	NAME	Qty
1	HOUSING	1
2	BOLT M5x25	8
3	BOLT M5x12	2
4	BOLT M6x25	1
5	NUT M6	1
6	HANGER ASSY	1
7	RIGHT HANDLE	1
8	BRACKET ASSY	1
9	BOLT M6x35	2
10	PLATE	1
11	ALUMINUM POLE	1
12	GEARBOX ASSY	1
13	3-TEETH BLADE	1
13-1	NYLON HEAD	1
14	BLADE	1
15	BOLT M4x10	3
16	DEBRIS GUARD	1
17	DRIVING SHAFT	1
18	SHAFT SLEEVE	6
19	LEFT HANDLE	1

Product	Agricultural Brush Cutter	KisanKraft Invoice Date	
Brand	KisanKraft	KisanKraft Invoice No.	
Model	□ KK-BC-7652		
WARRANTY PERIOD	6 MONTHS	FOR THE SPECIFIED PERIOD FROM THE DATE OF SALE OR DELIVERY WHICHEVER IS EARLIER.	
Dealer's Invoice Date		Dealer's Invoice No.	
Buyer's Info (Name, Address, Phone, etc.):		Dealer's Stamp (Address, Phone, TIN, etc.):	
Buyer's Sign		Dealer's Sign	

Warranty Policy

What is covered: KisanKraft Limited and its manufacturers warrant this product to be free from defects in material or workmanship. All parts defective in material and workmanship are covered.

This warranty will only cover defects arising under normal usage.

This warranty is limited to repair or replacement by KisanKraft Limited or its manufacturers of such parts as appear to KisanKraft or its manufacturers, upon inspection, to be defective in material and/or workmanship. KisanKraft or its manufacturers make no warranty with respect to items not manufactured or sold by them. No onsite warranty is provided by KisanKraft Limited or its manufacturers. Defective items must be brought/sent to our Authorized Dealer or KisanKraft Limited's office for service.

What is not covered: The *warranty shall become null and void* and neither KisanKraft Limited nor any of its manufacturers, nor its authorized dealers assume any responsibility, if the failure was caused by the following:

(1) Operation of product with incorrect fuel or lubricants, (2) Incorrect usage of machine or misuse, (3) Lack of maintenance, (4) Negligence, (5) Accident or physical damage, (6) Repairs made by unauthorized parties and/or with unauthorized parts, (7) Improper set up, adjustments, tampering or altered products (8) Any modification to the product what-so-ever.

Important: (1) Normal maintenance and adjustments to the product is the responsibility of the customer. (2) Normal wear and tear are not covered under warranty. (3) Rubber/plastic parts and consumables such as blades, clutch and clutch-bell, sparkplugs, nylon line, air-filters, fuel-filters, oil seals and gaskets etc. are not covered under the warranty. (4) Electrical Motor, Electrical Parts, Battery Etc. are not covered under the warranty.

Incidental / Consequential Loss: KisanKraft Limited or its manufacturers will not be liable for general damages, including bodily injuries, or for incidental or consequential damages including, but not limited to, loss of use, loss of profits, loss of production, expense of substitute equipment or other commercial loss or damage.

Limitation of Liability: This limited warranty is in lieu of all other express warranties, obligations, or liabilities. Any implied warranties, obligations, or liabilities, including, but not limited to, any implied warranty of merchantability shall be limited in duration to the applicable warranty period. Any action for breach of any warranties hereunder, including, but not limited to, any implied warranty of merchantability must be brought within the applicable warranty period.

Modifications of Warranty: No agent, representative, dealer, or employee of KisanKraft Limited or any of its manufacturers has the authority to increase or alter the obligations of this warranty.

Assignment / Transfer of warranty: The warranty cannot be assigned and shall not transfer if the product is resold by the first buyer. The above warranties are extended to the first end user (original purchaser), and no warranty is made, nor authorized to be made assignable on resale by the first end user.

What you must do to obtain limited warranty service: To obtain performance of any obligation under this warranty for failure during the applicable warranty period, you must deliver the defective product, to the nearest Authorized Dealer, along with proof-of-purchase (invoice/receipt). KisanKraft Limited, its manufacturers and its dealers reserve the right to inspect the claimed defective part(s) to determine if the malfunction is the result of a defect covered by this warranty. Please note that the decision of KisanKraft Limited with respect to any warranty claim is final.

After-sales Service (Including Warranty): KisanKraft Limited does not sell directly to consumers. All sales or supplies are made through Authorized Dealers. It is the responsibility of the Authorized Dealer to provide all after-sales service to consumers. Any warranty claim should be raised by dealer to KisanKraft Limited as per warranty policy.

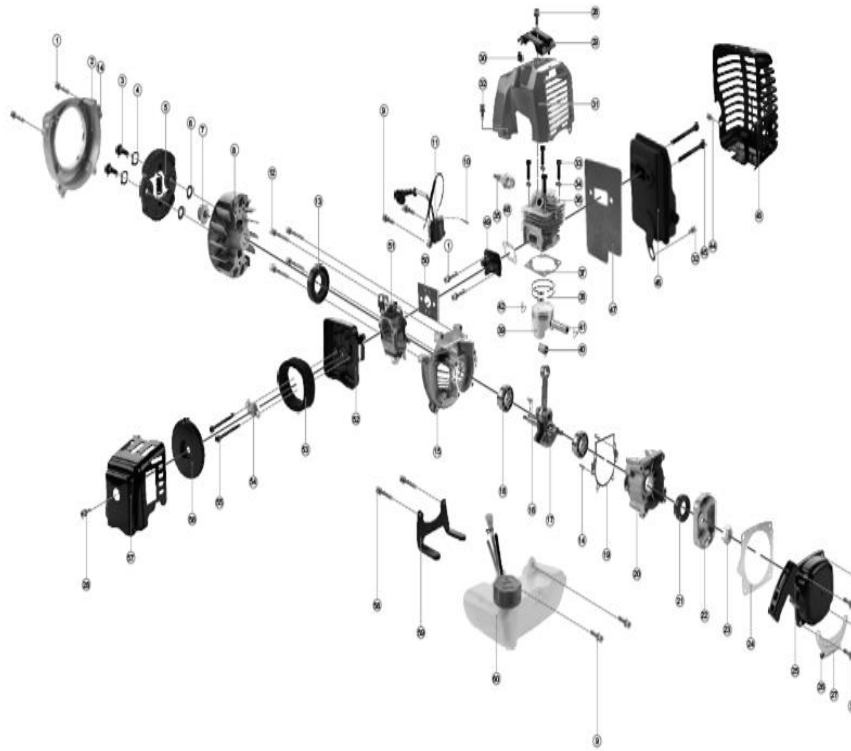
Jurisdiction: All disputes are subject to Bangalore court's jurisdiction.

Notes:

- This purchase is not contingent upon a product demonstration. The purchaser shall satisfy himself with the product, including any product demonstration or verification of any function, before buying. KisanKraft Limited or its authorized dealers, including online sellers, shall not be liable to give any on-site demonstration after purchase of any of the products.
- Any product once used will not be taken back by KisanKraft Limited.
- Warranty and After Sale Services (including but not limited to installation, Demonstration, Repair, Routine Maintenance etc.), should be done through the Authorized Dealer selling this product.
- Dealers should have their own technician to provide After Sales Services to their Customers. KisanKraft Limited provides free training to Authorized Dealer's technicians at KisanKraft Limited's head office, on request from Authorized Dealer.
-

SL.No	NAME	Qty	SL. No	NAME	Qty
1	Bolt M5*25	4	31	Cover, cylinder	1
2	Sider Cover	1	32	Bolt M5*12	2
3	Screw M8	2	33	Bolt M5*20	4
4	Washer	2	34	Washer	4
5	Clutch	1	35	Cylinder	1
6	Washer	2	36	Spark Plug	1
7	Nut M8	1	37	Gasket, cyliner	1
8	Rotor	1	38	Piston Ring	2
9	Bolt M5*20	9	39	Piston	1
10	Coil	1	40	Bearing K10*13*16	1
11	Coil Assy	2	41	Piston Pin	1
12	Bolt M5*35	4	42	Snap Ring	2
13	Oil Seal	1	43	Cover, Muffler	1
14	Pin	4	44	Bolt M5*12	1
15	Left Crankcase	1	45	Bolt M6*55	2
16	Key	1	46	Muffler	1
17	Crankshaft	1	47	Gasket, Muffler	1
18	Bearing	2	48	Gasket, Insulator	1
19	Gasket, crankcase	1	49	Insulator	1
20	Right Crankcase	1	50	Gasket, Carburetor	1
21	Oil Seal	1	51	Carburetor	1
22	Pulley	1	52	Body Assy	1
23	Nut M8	1	53	Element	1
24	Alum Washer	1	54	Plate	1
25	Recoil Assy	1	55	Bolt M5*55	2
26	Rubber, Blanket Tank	1	56	Cover	1
27	Bracket Tank	1	57	Cover, Air Filter	1
28	Bolt M5*16	1	58	Bolt M5*30	2
29	Cover	1	59	Fuel Tank	1
30	Cable Clip	1	60	Bracket Tank	1

ENGINE-DIAGRAM & PARTS LIST-KK-BC-7652





BEFORE GETTING STARTED

Before using the machine for the first time be sure to read through this manual in order to avoid wrong operation. Please preserve this manual properly so that it can provide you with information whenever necessary.

SAFETY SYMBOLS ON THE MACHINE:

Wear goggles, ear protection and head protection.	
Wear protecting gloves	
Wear safety shoes with hard soles.	
Read through this operation instruction before you use the device.	
Ensure cutting head is not touching foreign matters while starting and during operation.	
To reduce the risk of injury or damage, avoid contact with any hot surface.	
Keep all by standers at least 15m away from the work area.	
Cutting string: maximum allowable rotate speed	
Cutting blade: maximum allowable rotate speed.	
A hazard from fire/flammmable materials.	

Symbols on the filter cover:

Cold starting position of the handle at "choke" Operating position of handle at "running".	
Mixing ratio: 50:1, only suitable for mixed fuel	

SAFETY INSTRUCTIONS

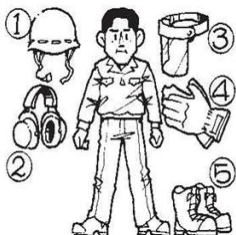


1. Read this manual carefully until you completely understand and follow all safety and operating instructions.
2. Keep this manual handy so that you may refer to it later whenever any questions arise. Also note, if you have any questions which cannot be answered herein, contact the dealer from whom you purchased the product.
3. Always be sure to include this manual when selling, lending, or otherwise transferring ownership of this product.



4. Never allow children or anyone unable to fully understand the directions given in the manual to use the machine.

Working Condition



1. When using the product, you should wear proper clothing and protective equipment.
 - (1) Helmet
 - (2) Ear protectors
 - (3) Protection goggles or face protector
 - (4) Thick work gloves
 - (5) Non-slip-sole work boots
2. And you should carry with you.
 - (1) Attached tools and files
 - (2) Properly reserved fuel
 - (3) Spare blade
 - (4) Things to notify your working area (rope, warning signs)
 - (5) Whistle (for collaboration or emergency)
 - (6) Hatchet or saw (for removal of obstacles)

TEHNICAL SPECIFICATIONS

Petrol Engine	2-Stroke ,
3-Point Blade	25.4 cm (10 inches)
Tap & go	Nylon Body
Carburetor	Diaphragm type
Rated Power:	2.2 kW (2.95 hp)
Displacement:	52 cc
Speed:	9000 RPM
Fuel Tank Capacity: L	1.2L
Fuel Consumption:	0.02l/min

Technical data is subject to change without prior notice.

Case 2. Engine starts but does not keep running/Hard re-starting:

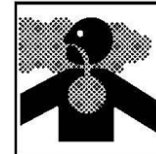
Check	Probable cause	Action to be taken
Fuel tank	Incorrect fuel or staled fuel	Drain it and with correct fuel
Carburetor adjustment screw	Out of normal range	Adjust to normal range
Muffler, cylinder (exhaust port)	Carbon is built-up	Wipe away
Air cleaner	Clogged with dust	Wash
Cylinder fin, fan cover	Clogged with dust	Clean

When your unit seems to need further service, please contact your dealer or company service center



3. Do not wear loose clothing, jewelry, short trousers, sandals, or go barefoot. Do not wear anything which might be caught by a moving part of the unit. Secure hair so it is above shoulder length.

Working Circumstance



1. Never start the engine inside a closed room or building. Exhaust gases contain dangerous carbon monoxide.
2. Never use the product,
 - a) When the ground is slippery or when you can't maintain a steady posture.
 - b) At night, at times of heavy fog, or at any other times when your field of vision might be limited, and it would be difficult to gain a clear view of the working area.
 - c) During rainstorms, during lightning storms, at times of strong or gale-force winds, or at any other times when weather conditions might make it unsafe to use the product.



Working Plan



1. You should never use the product when under the influence of alcohol, when suffering from exhaustion or lack of sleep, when suffering from drowsiness as a result of having taken cold medicine or at any other time when a possibility exists that your judgment might be impaired or that you might not be able to operate the product properly and in a safe manner.
2. When planning your work schedule, allow plenty of time to rest. Limit the amount of time over which the product is to be used continuously to somewhere around 30~40 minutes per session and take 10~20 minutes of rest between work sessions. Also try to keep the total amount of work performed in a single day under 2 hours or less.



WARNING



1. If you don't observe the working time, or working manner, Repetitive Stress Injury (RSI) could occur. If you feel discomfort, redness and swelling of your fingers or any other part of your body, see a doctor before getting worse.
2. To avoid noise complaints, in general, operate product between 8a.m. and 5p.m. on weekdays and 9a.m. to 5p.m. during Weekends.



NOTE:

Check and follow the local regulations as to sound level and hours of operations for the product.

Before Starting the Engine

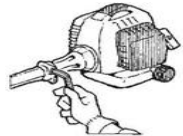


1. The area within a perimeter of 50 feet (15m) of the person using the product should be considered a hazardous area into which no one should enter. If necessary, yellow warning rope and warning signs should be placed around the perimeter of the area. When work is to be performed simultaneously by two or more persons, care should also be taken to constantly look around or otherwise check for the presence and locations of other people working so as to maintain a distance between each person sufficient to ensure safety.
2. Check the condition of working area to avoid any accident by hitting hidden obstacles such as stumps, stones, cans, or broken grass.

IMPORTANT

Remove any obstacle before beginning work.

3. Inspect the entire unit for loose fasteners and fuel leakage. Make sure that the cutting attachment is properly installed and securely fastened.
4. Be sure the debris guard is firmly attached in place.
5. If the cutting head is a metal blade, use the shoulder strap. Adjust the strap for comfort before starting the engine. The strap should be adjusted so the left hand can comfortably hold the handlebar grip approximately waist high



Starting the Engine

TRANSPORTATION



When you finish using the strimmer in one location and wish to continue working in another spot, turn off the engine, lift up the unit and carry it, paying attention to the heater.



Be careful not to spill any fuel during transportation to another spot.

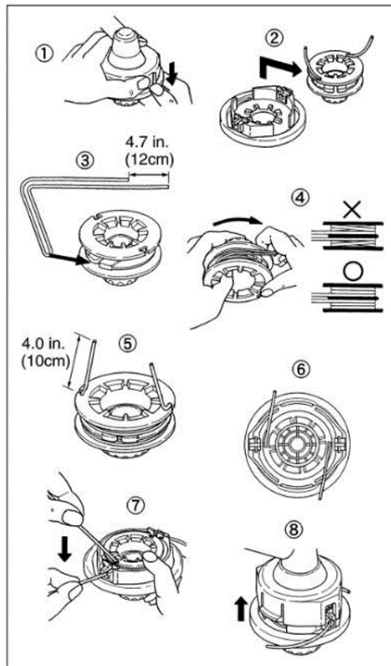
When transporting the unit over long distances, ensure the engine is cool to touch, and that no fluids cannot spill out.

TROUBLESHOOTING

Case 1. Starting failure

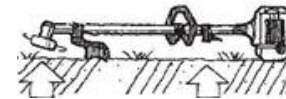
Check	Probable cause	Action to be taken
Fuel tank	Incorrect fuel	Drain it and with correct fuel
Fuel filter	Fuel filter is clogged	Clean the fuel filter
Carburetor adjustment screw	Out of normal range	Adjust to normal range
Spark plug (no spark)	Spark plug is fouled/wet	Clean/dry the spark plug
	Plug gap is incorrect	Correct (GAP: 0.6-0.7mm)
Spark plug	Disconnected	Retighten the spark plug

Refilling Trimming Line:



⚠ For safety reasons, do not use metal reinforced line.

1. For replacement line, use a diameter of 2.4mm (.095in). The spool is capable for a line up to 6m (20ft) on the 10cm (4") head. Avoid using a larger line as it may cut down the trimming performance.
2. Pinch the slotted area on both sides of the spool housing to unhook the bottom cap.
3. Take out the spool and pull off the old line. Put one end of new line through the spool holes and pull it until the length is equal between each part of the line.
4. Wind up the line in the correct direction as indicated on the spool.
5. Hook each end of the line in the slot on the edge of the spool, and then put the ends through the eyelets on the housing. Make sure that the spring and the washers are in place.
6. While holding the spool against the housing, pull the line ends to release them from the slot.
7. Line up the slot on the bottom cap with the hook on the housing, press the cap against the housing until it clicks.



1. Keep bystanders and animals at least 50feet (15m) away from the operating point. If you are approached, immediately stop the engine.
2. The product is equipped with a centrifugal clutch mechanism, so the cutting attachment begins to rotate as soon as the engine is started by putting the throttle into the start position. When starting the engine, place the product onto the ground in a flat clear area and hold it firmly in place so as to ensure that neither the cutting part nor the throttle comes into contact with any obstacle when the engine starts.

⚠ WARNING: Never place the throttle into the high-speed position when starting the engine.

3. After starting the engine, check to make sure that the cutting attachment stops rotating when the throttle is moved fully back to its original position. If it continues to rotate even after the throttle has been moved fully back, turn off the engine and take the unit to your authorized servicing dealer for repair.

Using the Product

⚠ IMPORTANT

Cut only materials recommended by the manufacturer. And use only for tasks explained in the manual.



1. Grip the handles firmly with both hands using your whole hand. Place your feet slightly apart (slightly further apart than the width of your shoulders) so that your weight is distributed evenly across both legs, and always be sure to maintain a steady, even posture while working.
2. Keep cutting attachment below waist level.
3. Maintain the speed of the engine at the level required to perform cutting work, and never raise the speed of the engine above the level necessary.
4. If the unit starts to shake or vibrate, turn off the engine and check the whole unit. Do not use it until the trouble has been properly corrected.
5. Keep all parts of your body away from rotating cutting attachments and hot surfaces.
6. Never touch the muffler, spark plug, or other metallic parts of the engine while the engine is in operation or immediately after shutting down the engine. Doing so could result in serious burns or electrical shock.



If Someone Comes

1. Guard against hazardous situations at all times. Warn adults to keep pets and children away from the area. Be careful if you are approached. Injury may result from flying debris.
2. If someone calls out or otherwise interrupts you while working, always be sure to turn off the engine before turning around

Maintenance



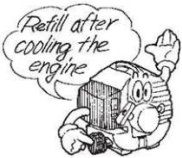
1. In order to maintain your product in proper working order, perform the maintenance and checking operations described in the manual at regular intervals.
2. Always be sure to turn off the engine before performing any maintenance or checking procedures.

⚠️ WARNING

The metallic parts reach high temperatures immediately after stopping the engine.

3. Under no circumstances should you ever take apart the product or alter it in any way. Doing so might result in the product becoming damaged during operation or the product becoming unable to operate properly

Handling Fuel

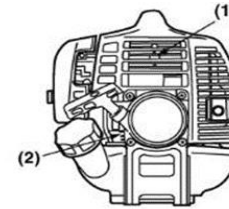


1. The engine of the product is designed to run on mixed fuel which contains highly flammable petrol. Never store cans of fuel or refill the tank of the unit in any place where there is a boiler, stove, wood fire, electrical sparks, welding sparks, or any other source of heat or fire which might ignite the fuel.
2. Never smoke while operating the unit or refilling its fuel tank.
3. When refilling the tank, always turn off the engine and allow it to cool down. Take a careful look around to make sure that there are no sparks or open flames anywhere nearby before refueling.
4. Wipe spilled fuel completely using a dry rag if any fuel spillage occurs during refueling.
5. After refueling, screw the fuel cap back tightly onto the fuel tank and then carry the unit to a spot 10feet (3m) or more away from where it was refueled before turning on the engine.

Transportation

- exhaust leakage is found, do not use the brush cutter and have it repaired immediately.
- Note that failing to do so may result in the engine catching on fire.

CLEARING BLOCKAGES:



- (1) Cylinder fin
- (2) Intake air cooling vent (back)

⚠️ WARNING

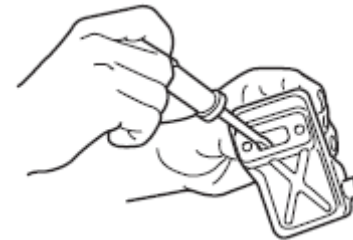
Check the intake air cooling vent and the area around the cylinder cooling fins after every 25 hours of use for blockage and remove any waste which has attached itself to the brush cutter.

⚠️ IMPORTANT

If waste gets stuck and causes blockage around the intake air cooling vent or between the cylinder fins, it may cause the engine to overheat, and that in turn may cause mechanical failure on the part of the brush cutter

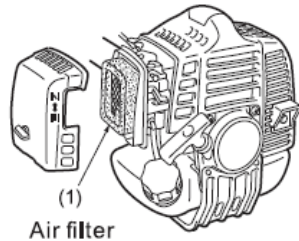
AFTER EVERY 100 HOURS OF USE

MUFFLER CLEANING



1. Remove the muffer, insert a screwdriver into the vent, and wipe away any carbon build up. Wipe away any carbon build up on the muffer exhaust vent and cylinder exhaust port at the same time.
3. Tighten all screws, bolts, and fittings.
4. Check to see if any oil or grease has worked its way in between the clutch lining and drum, and if it has, wipe it away using spirits.

IR FILTER:



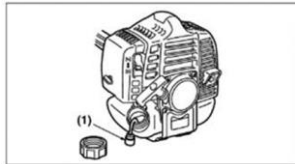
(1)
Air filter

The air filter, if clogged, will reduce the engine performance. Monthly check and clean the filter element in warm, soapy water as required. Dry completely before installing. If the element is broken or shrunk, replace it with a new one.

Note: In the adjacent fig:

(1) Air Filter

FUEL FILTER



When the engine runs short of fuel supply, check the fuel cap and the fuel filter for blockage.

Note: In the adjacent fig:

Fuel Filter

SPARK PLUG:

- Starting failure and misfiring are often caused by a fouled spark plug. Clean the spark plug and check that the plug gap is in the correct range. For a replacement plug, use the correct type.
- Periodically clean the spark plug and check that the spark gap is in the correct range.

ⓘ IMPORTANT

Note that using any spark plugs other than those designated may result in the engine failing to operate properly or in the engine becoming overheated and damaged.

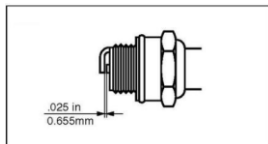
- To install the spark plug, first turn the plug until it is finger tight, then tighten it a quarter turn more with a socket wrench.

TIGHTENING TORQUE: 9.8~11.8 Nm.

Muffler:

⚠ WARNING

- Inspect periodically the muffler for loose fasteners, any damage or corrosion. If any sign of



1. When hand-carrying the product, cover over the cutting part, if necessary, lift up the product and carry it paying attention to the blade.
2. Never transport the product over rough roads over long distances by vehicle without removing all fuel from the fuel tank. If doing so, fuel might leak from the tank during transport.

Application

If the Brush cutter is fitted with **cutting string** as trimmer as attachment, it is used for **cutting grass** grown in **park, garden** and **around tree** or **fence**.

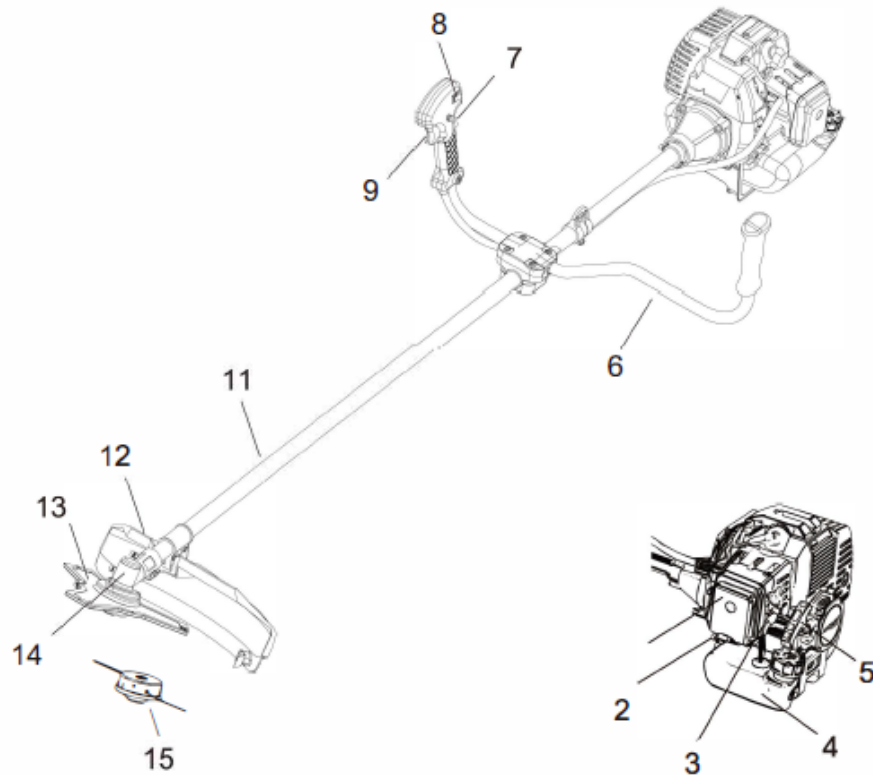
If the Brush cutter uses **metal cutting blade** as attachment, used for **cutting grass, weed** or **light plants**.

When Brush cutter uses **metal (TCT) cutting blade** with **paddy guard** as attachment, used for harvesting **paddy, wheat**, and other **cereal crops**.

Note: Any other purpose not specified and permitted in this manual may damage device and cause serious injury to the user. Do not use this device to cut thorns, shrubs, or bush.

The manufacturer shall not be responsible for damage caused by wrong operation.

PRODUCT OVERVIEW

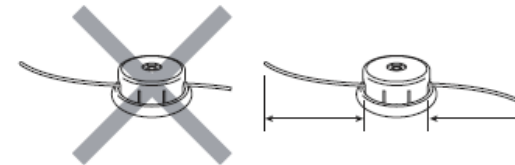


- 1. Air filter cover
- 2. Primer bulb
- 3. Choker lever
- 4. Fuel tank
- 5. Pull start
- 6. Handle
- 7. Throttle control
- 8. ON/OFF switch
- 9. Throttle trigger

- 10. Gear case
- 11. Shaft
- 12. Guard
- 13. 3 Teeth blade
- 14. Gear case
- 15. Nylon spool

3. Use a slow, deliberate action to cut heavy growth. The rate of cutting motion will depend on the material being cut. Heavy growth will require slower action than light growth.
4. Never swing the unit as hard as you are in danger of losing your balance or control of the unit. Try to control the cutting motion with the hip rather than placing the full workload on the arm and hands.
5. Take precautions to avoid wire, grass, and dead, dry, long-stem weeds from wrapping around the head shaft. Such materials can stall the head and cause the clutch to slip, resulting in damage to the clutch system if repeated frequently.

Adjusting the Line Length:



1. Your brush cutters are equipped with a semiauto type nylon line head that allows the operator to advance the line without stopping the engine. When the line becomes short, lightly tap the head on the ground while running the engine at full throttle.
2. Each time the head is bumped, the line advances about 1 inch (25.4 mm). For better effect, tap the head on bear ground or hard soil. Avoid bumping in thick, tall grass as the engine may stall by overload.

MAINTENANCE

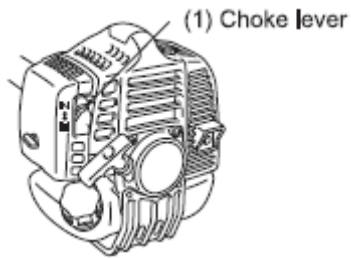


1. Make sure to maintain the machine in good working condition, carry out regular maintenance of the machine after each use and before storage.
2. Any breach of adequate maintenance reduces the life of the machine and increases the risk of breakdowns and accidents.
3. To preserve the security system throughout the life of the machine, it is important to perform maintenance and proper cleaning, DO NOT use non-compliant replacement parts and DO NOT dismantle the machine yourself or change the security features.

- Over choking can make the engine hard to start due to excess fuel. When the engine failed to start after several attempts, open the choke and repeat pulling the rope, or remove the spark plug and dry it.

The product is equipped with a centrifugal clutch mechanism, so the cutting attachment begins to rotate as soon as the engine is started by putting the throttle into the start position. When starting the engine, place the product onto the ground in a flat clear area and hold it firmly in place so as to ensure that neither the cutting part nor the throttle comes into contact with any obstacle when the engine starts.

STOPPING ENGINE



Release the throttle lever and run the engine for half a minute, then move the stop switch to the STOP position.



Except for an emergency, avoid stopping the engine while pulling the throttle lever.



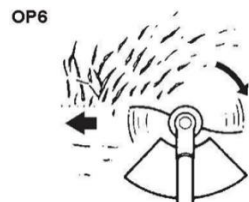
If engine doesn't stop at the stop switch, move the choke lever to the closed position.

OPERATION

OPERATING ADVICE

TRIMMING GRASS AND WEEDS:

Always remember that the TIP of the line is cutting. You will achieve better results by not crowding the line into the cutting area. Allow the unit to trim at its own pace.



- Hold the unit so the head is off the ground and is tilted about 20 degrees toward the sweep direction. (OP6)

- You can avoid thrown debris by sweeping from your right to the left.

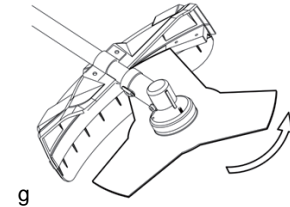
FOR SAFE OPERATION

GENERAL WORKING INSTRUCTION

IMPORTANT

QUICK RELEASE

There is an easily accessible, quick release fitted at the front as a safety precaution in case the engine catches fire, or in any other situation that yourself from the machine. And harness. See instructions under the heading Adjusting the harness and brush cutter.



Check that the harness straps are correctly positioned. Once the harness and machine have been adjusted, check that the harness quick.



CUTTING ATTACHMENT GUARD

This guard is intended to prevent loose objects from being thrown towards the operator. The guard also protects the operator from accidental contact with the cutting attachment. Check that the guard is undamaged and not cracked. Replace the guard if it has been exposed to impact or is cracked. Always use the recommended guard for the cutting attachment you are using. See chapter on Technical data.

IMPORTANT

Never use a cutting attachment without an approved guard. data. If an incorrect or faulty guard is fitted this can cause serious personal injury

AVOID KICKBACK

The best protection is to avoid situations that lead to setback s.1.Keep the position of the upper guide rail always in mind.
2.Be especially careful when cutting in affected areas.
3.Cut only one branch at a time.

WARNING ABOUT SOUND AND VIBRATION

- Wear earmuffs
The impact of noise can cause damage to hearing.
- Reduce noise generation and vibration to a minimum!
Use only equipment that is in perfect condition.
Maintain and clean the equipment regularly.
Adopt your way of working to the equipment.
Do not overload the equipment.
Have the equipment checked if necessary.
Switch off the equipment when not in use.
Wear gloves.

OTHER BASIC SAFTY RULES

IMPORTANT

- Please note that some national regulations may restrict the use of the machine.
- Subject the brush cutter/grass trimmer to a visual inspection before each use.
Before starting work, after tank filling, after impact or dropping:

- Check the cutting tools for secure seating, general visual check for cracks and damage.
- Immediately replace damaged or blunt cutting tools, even in the event of minor hairline cracks.
- Sharpen cutting tools (also when required)

3. Parts replacement

- Only use original parts for accessories as well

as for wearing and spare parts. Spare parts are available from your specialized dealer.

- Have your brush cutter/grass trimmer serviced only by qualified personnel and by use original spare parts only. This ensures that the machine will work safety in the future. Replace damaged or worn parts with matching spare parts they are in the shape and size of the original parts as necessary.

ⓘ IMPORTANT

Never use without properly mounted blade guard!

OPERATION

STARTING ENGINE.

⚠ WARNING

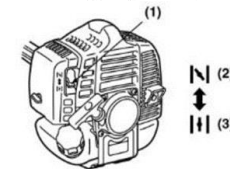
The cutting head will start rotating upon the engine starts.

1. Feed fuel into the fuel tank and tighten the cap securely.
2. Rest the unit in a flat, firm place. Keep the cutting head off the ground and clear of surrounding objects as it will start rotating upon starting of the engine.

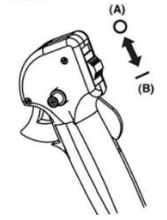
OP1



OP2



OP3



OP4



3. Push the primer pump several times until overflow fuel flows out in the return tube.
4. Move the choke lever to the closed position.

Note: In the adjacent figure,

- (1) Choke lever
- (2) Closed position
- (3) Open position

5. Set the ignition switch to the "start" position. While pulling the throttle lever, push the throttle set button, and release the throttle, then the throttle lever is into the "Start" position.

Note: In the adjacent figure,

- (A) Stop position
- (B) Start position

6. While holding the unit firmly, pull out the starter rope quickly until engine fires.

⚠ IMPORTANT

Avoid pulling the rope to its end or returning it by releasing the knob. Such actions can cause starter failures.

7. Move the choke lever to the open position (OP2). And pull out the starter rope quickly to restart engine. (OP4)
8. Allow the engine to warm up for several minutes before starting operation.

📖 NOTE

1. When restarting the engine immediately after stopping it, leave the choke open (OP2) and push the primer pump several times (OP4).

FUELING THE UNIT:

1. Untwist and remove the fuel cap. Rest the cap in a dustless place.
2. Pour fuel into the fuel tank to 80% of the full capacity.
3. Fasten the fuel cap securely and wipe up any fuel spillage around the unit.
4. Fill 60-80 ml oil into the oil tank. (in case of 4-stroke engine)

WARNING

1. Select bare ground for fueling.
2. Move at least 10ft (3m) away from the fueling point before starting the engine.
3. Stop the engine before refueling the unit.
4. In the case of storing the product for a long period of time, clean the fuel tank after rendering it empty. Next, start the engine and empty the carburetor of the composite fuel.
5. In the case of scrap

FOR YOUR ENGINE LIFE, AVOID

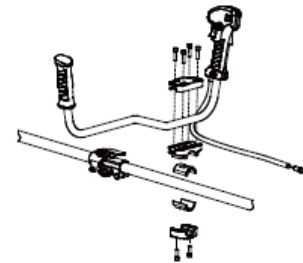
1. FUEL WITH NO OIL (RAW PETROL)- it will cause severe damage to the internal engine parts very quickly.
2. 'GASOHOL' – It can cause deterioration of rubber and /or plastic parts and disruption of engine lubrication.
3. OIL FOR 4-STROKE ENGINE USE – It can cause spark plug fouling, exhaust port blocking, or piston ring sticking.
4. Mixed fuels which have been left unused for a period of one month or more may clog the carburetor and result.
5. In the case of storing the product for a long period of time, clean the fuel tank after rendering it empty, next, start the engine and empty the carburetor of the composite fuel.
6. In the case of scrapping the used mixed oil container, scrap it only at an authorized repository site.

ASSEMBLY

Make sur unit is assembled correctly as shown in this manual. Be sure to follow all the assembly instructions.



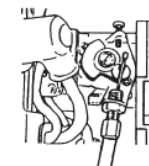
INSTALLATION HANDLE



1. Loosen the 4 bolts on the upper cap and insert the handle. Retighten the bolts.
2. Put the handle assembly into the bracket and put the upper cap over it. Tighten the cap securely.
3. Insert the right handle into the switch assembly and tighten with bolt and nut.

CONNECTING THROTTLE WIRE

s



1. Remove the air cleaner cover.

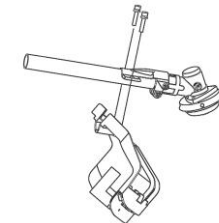
2. Connect the end of the throttle wire to the joint on the top of the carburetor.

CONNECTING SWITCH WIRES

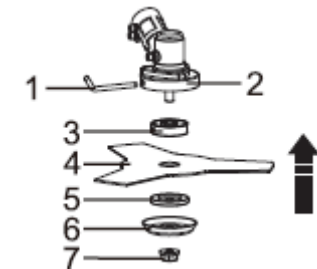
Connecting the switch wires between the engine and the main unit, pair the wires of the same color.

INSTALLING CUTTING ATTACHMENT GUARD

Put the cutting attachment guard on the gearbox attach it with the 2 screws and hardware provided.



INSTALLING BLADE

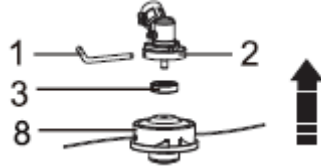


1. Insert the allen key (1) into the of the gear case (2) and plate (3) so as to fasten the axle.
2. Mount the blade(4) and the washer (5) onto the axle.
3. Mount the washer (6) and the nut (7) Fasten tightly anti clockwise.



Beware of blade thrust!

INSTALLING TRIMMER BLADE



1. Insert the Allen key (1) into the hole of gear case (2) ad plate (3) so as to fasten the axle.
2. Fasten the trimmer head (8), tightly before use.

BALANCEING THE STRIMMER



1. Put harness on and attach your strimmer to it.
2. Slide clamp up and down, till you feel comfortable with how the strimmer balances, and how you can maneuver it while working.



Make sure the strimmer unit is off, whilst doing this procedure, to ensure maximum balancing.

FILLING WITH OIL AND FUEL



⚠️ WARNING

- Petrol is very flammable. Avoid smoking or bringing any flame or sparks near fuel.
- Wipe up all spills before starting the engine.
- Make sure to stop the engine and allow it to cool before refueling the unit.
- Keep open flames away from the area where fuel is handled or stored.

⚠️ IMPORTANT

- Never use oil for 4 cycle engine use or water cooled 2-cycle engine.
- Never use "FUEL WITH NO OIL (PURE PETROL)".
- Never use fuel laced with water.
- Mixed fuels which have been left unused for a period of one month or more may clog the carburetor or result in the engine failing to operate properly. Put remained fuel into an air-tight container and keep it in the dark and cool room.
- Please ask for "mixed petrol for air-cooled 2-cycle engines" at your nearest gas station, or use fuel made by putting unleaded petrol for automobiles and air-cooled 2-cycle engine oil into a mixing container in accordance with the following ratios and then shaking to mix well.

HOW TO MIX FUEL:



1. Measure out the quantities of petrol and oil to be mixed.
2. Put some of the petrol into the clean, approved fuel container supplied.
3. Pour in the oil and agitate well.
4. Be careful that, if the agitation is insufficient, there is an increased danger of early piston seizing due to abnormally lean mixture.

Mixing ratios:

When using commercially available 2-cycle oil: **25:1**
(40 ml of oil for every 1 liter of petrol)