



Warranty Certificate

(KISANKRAFT COPY)

limited to, loss of use, loss of profits, loss of production, expense of substitute equipment or other commercial loss or damage.

Limitation of Liability: This limited warranty is in lieu of all other express warranties, obligations, or liabilities. Any implied warranties, obligations or liabilities, including, but not limited to, any implied warranty of merchantability shall be limited in duration to the applicable warranty period. Any action for breach of any warranties hereunder, including, but not limited to, any implied warranty of merchantability must be brought within the applicable warranty period.

Modifications of Warranty: No agent, representative, dealer, or employee of KisanKraft Limited or any of its manufacturers has the authority to increase or alter the obligations of this warranty.

Assignment / Transfer of warranty: The warranty cannot be assigned and shall not transfer if the product is resold by the first buyer. The above warranties are extended to the first end user (original purchaser), and no warranty is made, nor authorized to be made assignable on resale by the first end user.

What you must do to obtain limited warranty service: To obtain performance of any obligation under this warranty for failure during the applicable warranty period, you must deliver the defective product, to the nearest Authorized Dealer, along with proof-of-purchase (invoice/receipt). KisanKraft Limited, its manufacturers and its dealers reserve the right to inspect the claimed defective part(s) to determine if the malfunction is the result of a defect covered by this warranty. Please note that the decision of KisanKraft Limited with respect to any warranty claim is final.

After-sales Service (Including Warranty): KisanKraft Limited does not sell directly to consumers. All sales or supplies are made through Authorized Dealers. It is the responsibility of the Authorized Dealer to provide all after-sales service to consumers. Any warranty claim should be raised by dealer to KisanKraft Limited as per warranty policy.

Jurisdiction: All disputes are subject to Bangalore court's jurisdiction.

Notes:

- This purchase is not contingent upon a product demonstration. The purchaser shall satisfy himself with the product, including any product demonstration or verification of any function, before buying. KisanKraft Limited or its authorized dealers, including online sellers, shall not be liable to give any on-site demonstration after purchase of any of the product.
- Any product once used will not be taken back by KisanKraft Limited.
- Warranty and After Sale Services (including but not limited to installation, Demonstration, Repair, Routine Maintenance etc.), should be done through the Authorized Dealer selling this product.
- Dealers should have their own technician to provide After Sales Services to their Customers. KisanKraft Limited provides free training to Authorized Dealer's technicians at KisanKraft Limited's head office, on request from Authorized Dealer.

This warranty is null & void, if you fail to register the warranty with KisanKraft by sending the KisanKraft Copy with dealer's stamp.

🌐: www.kisankraft.com ✉: info@kisankraft.com ☎: +91.80. 6835 7800



Warranty Certificate

(DEALER COPY)

Product	Agricultural Portable Sprayer (Power)	KisanKraft Invoice Date	
Brand	KisanKraft	KisanKraft Invoice No.	
Model	<input type="checkbox"/> KK-PPS-764B <input type="checkbox"/> KK-PPS-765B		
WARRANTY PERIOD	6-MONTHS	FOR THE SPECIFIED PERIOD FROM THE DATE OF SALE OR DELIVERY WHICHEVER IS EARLIER.	
Dealer's Invoice Date		Dealer's Invoice No.	
Buyer's Info (Name, Address, Phone, etc.):		Dealer's Stamp (Address, Phone, TIN, etc.):	
Buyer's Sign		Dealer's Sign	

Warranty Policy

What is covered: KisanKraft Limited and its manufacturers warrant this product to be free from defects in material or workmanship. All parts defective in material and workmanship are covered.

This warranty will only cover defects arising under normal usage.

This warranty is limited to repair or replacement by KisanKraft Limited or its manufacturers of such parts as appear to KisanKraft or its manufacturers, upon inspection, to be defective in material and/or workmanship. KisanKraft or its manufacturers make no warranty with respect to items not manufactured or sold by them. No onsite warranty is provided by KisanKraft Limited or its manufacturers. Defective items must be brought/sent to our Authorized Dealer or KisanKraft Limited's office for service.

What is not covered: The *warranty shall become null and void* and neither KisanKraft Limited nor any of its manufacturers, nor its authorized dealers assume any responsibility, if the failure was caused by the following:

- (1) Operation of product with incorrect fuel or lubricants, (2) Incorrect usage of machine or misuse, (3) Lack of maintenance, (4) Negligence, (5) Accident or physical damage, (6) Repairs made by unauthorized parties and/or with unauthorized parts, (7) Improper set up, adjustments, tampering or altered products (8) Any modification to the product what-so-ever.

Important: (1) Normal maintenance and adjustments to the product is the responsibility of the customer. (2) Normal wear and tear are not covered under warranty. (3) Rubber/plastic parts and consumables such as blades, clutch and clutch-bell, sparkplugs, nylon line, air-filters, fuel-filters, oil seals and gaskets etc. are not covered under the warranty. (4) Electrical Motor, Electrical Parts, Battery Etc. are not covered under the warranty.

This warranty is null & void, if you fail to register the warranty with KisanKraft by sending the KisanKraft Copy with dealer's stamp.

🌐: www.kisankraft.com ✉: info@kisankraft.com ☎: +91.80. 6835 7800

Incidental / Consequential Loss: KisanKraft Limited or its manufacturers will not be liable for general damages, including bodily injuries, or for incidental or consequential damages including, but not limited to, loss of use, loss of profits, loss of production, expense of substitute equipment or other commercial loss or damage.

Limitation of Liability: This limited warranty is in lieu of all other express warranties, obligations, or liabilities. Any implied warranties, obligations, or liabilities, including, but not limited to, any implied warranty of merchantability shall be limited in duration to the applicable warranty period. Any action for breach of any warranties hereunder, including, but not limited to, any implied warranty of merchantability must be brought within the applicable warranty period.

Modifications of Warranty: No agent, representative, dealer, or employee of KisanKraft Limited or any of its manufacturers has the authority to increase or alter the obligations of this warranty.

Assignment / Transfer of warranty: The warranty cannot be assigned and shall not transfer if the product is resold by the first buyer. The above warranties are extended to the first end user (original purchaser), and no warranty is made, nor authorized to be made assignable on resale by the first end user.

What you must do to obtain limited warranty service: To obtain performance of any obligation under this warranty for failure during the applicable warranty period, you must deliver the defective product, to the nearest Authorized Dealer, along with proof-of-purchase (invoice/receipt). KisanKraft Limited, its manufacturers and its dealers reserve the right to inspect the claimed defective part(s) to determine if the malfunction is the result of a defect covered by this warranty. Please note that the decision of KisanKraft Limited with respect to any warranty claim is final.

After-sales Service (Including Warranty): KisanKraft Limited does not sell directly to consumers. All sales or supplies are made through Authorized Dealers. It is the responsibility of the Authorized Dealer to provide all after-sales service to consumers. Any warranty claim should be raised by dealer to KisanKraft Limited as per warranty policy.

Jurisdiction: All disputes are subject to Bangalore court's jurisdiction.

Notes:

- This purchase is not contingent upon a product demonstration. The purchaser shall satisfy himself with the product, including any product demonstration or verification of any function, before buying. KisanKraft Limited or its authorized dealers, including online sellers, shall not be liable to give any on-site demonstration after purchase of any of the products.
- Any product once used will not be taken back by KisanKraft Limited.
- Warranty and After Sale Services (including but not limited to installation, Demonstration, Repair, Routine Maintenance etc.), should be done through the Authorized Dealer selling this product.
- Dealers should have their own technician to provide After Sales Services to their Customers. KisanKraft Limited provides free training to Authorized Dealer's technicians at KisanKraft Limited's head office, on request from Authorized Dealer.

This warranty is null & void, if you fail to register the warranty with KisanKraft by sending the KisanKraft Copy with dealer's stamp.

🌐: www.kisankraft.com ✉: info@kisankraft.com ☎: +91.80. 6835 7800

Product	Agricultural Portable Sprayer (Power)	KisanKraft Invoice Date	
Brand	KisanKraft	KisanKraft Invoice No.	
Model	☐ KK-PPS-764B ☐ KK-PPS-765B		
WARRANTY PERIOD	6-Months	FOR THE SPECIFIED PERIOD FROM THE DATE OF SALE OR DELIVERY WHICHEVER IS EARLIER.	
Dealer's Invoice Date		Dealer's Invoice No.	
Buyer's Info (Name, Address, Phone, etc.):		Dealer's Stamp (Address, Phone, TIN, etc.):	
Buyer's Sign		Dealer's Sign	

Warranty Policy

What is covered: KisanKraft Limited and its manufacturers warrant this product to be free from defects in material or workmanship. All parts defective in material and workmanship are covered. This warranty will only cover defects arising under normal usage.

This warranty is limited to repair or replacement by KisanKraft Limited or its manufacturers of such parts as appear to KisanKraft or its manufacturers, upon inspection, to be defective in material and/or workmanship. KisanKraft or its manufacturers make no warranty with respect to items not manufactured or sold by them. No onsite warranty is provided by KisanKraft Limited or its manufacturers. Defective items must be brought/sent to our Authorized Dealer or KisanKraft Limited's office for service.

What is not covered: The *warranty shall become null and void* and neither KisanKraft Limited nor any of its manufacturers, nor its authorized dealers assumes any responsibility, if the failure was caused by the following:

- (1) Operation of product with incorrect fuel or lubricants, (2) Incorrect usage of machine or misuse, (3) Lack of maintenance, (4) Negligence, (5) Accident or physical damage, (6) Repairs made by unauthorized parties and/or with unauthorized parts, (7) Improper set up, adjustments, tampering or altered products (8) Any modification to the product what-so-ever.

Important: (1) Normal maintenance and adjustments to the product is the responsibility of the customer. (2) Normal wear and tear are not covered under warranty. (3) Rubber/plastic parts and consumables such as blades, clutch and clutch-bell, sparkplugs, nylon line, air-filters, fuel-filters, oil seals and gaskets etc. are not covered under the warranty. (4) Electrical Motor, Electrical Parts, Battery Etc. are not covered under the warranty.

Incidental / Consequential Loss: KisanKraft Limited or its manufacturers will not be liable for general damages, including bodily injuries, or for incidental or consequential damages including, but not

This warranty is null & void, if you fail to register the warranty with KisanKraft by sending the KisanKraft Copy with dealer's stamp.

🌐: www.kisankraft.com ✉: info@kisankraft.com ☎: +91.80. 6835 7800



Wide Range of Products for Every Need



User Manual



KisanKraft Limited

Warehouse: 818 3B1 to 818 3B18, Podalukur - Sangam Road, Prabagiripatnam, Podalukur, Nellore - 524345, Andhra Pradesh, INDIA
Head Office: #4, 1st Main, 7-A Cross, Maruthi Layout, Dasarahalli, HAF Post, Hebbal, Bangalore 560024, Karnataka, INDIA

- ◆ Bangalore (HO) ◆ Ahmedabad ◆ Bhopal ◆ Bhubaneswar ◆ Coimbatore
- ◆ Guwahati ◆ Hubli ◆ Hyderabad ◆ Jaipur ◆ Karnal
- ◆ Kolkata ◆ Lucknow ◆ Nellore ◆ Pune ◆ Raipur



Scan the QR code to download KisanKraft App

App is available on Google Play



Scan the QR code for KisanKraft Youtube Channel

YouTube

For more information give **MISSED CALL: 07676065555**



Many of our products have BIS: ISI certification.



CONTENTS

BEFORE GETTING STARTED7

SAFETY INSTRUCTIONS.....7

PRODUCT COMPONENT.....8

MAINTENANCE AND STORAGE 11

TECHNICAL SPECIFICATIONS 12

TROUBLESHOOTING 13

PRESSURE PUMP PARTS - DIAGRAM..... 16

PRESSURE PUMP PARTS-LIST 17

ENGINE PARTS-DIAGRAMPART DIAGRAM KK-PPS-P764B/765B 19

KisanKraft has a large range of products to serve the farmers. A list of our products is given below:

<p>Brush Cutters and Accessories</p> <ul style="list-style-type: none"> Brush Cutter/Power Weeder Backpack Brush Cutter Tea Pruner Pole pruner with Engine Reaper Attachment Blades-Circular Blades (2 & 3 points) Baffle Nylon Rope Tap & Go <p>Chainsaws</p> <ul style="list-style-type: none"> Petrol Chainsaw Electric Chainsaw Chain Sharpening Machine <p>Engines and Water Pumps</p> <ul style="list-style-type: none"> Engine –Diesel-(Horizontal) Engine –Diesel(Vertical) Engine-Kerosene Water Pump with Petrol Engine Water Pump with Kerosene Engine Water Pump with Diesel Engine <p>Hand Tools</p> <ul style="list-style-type: none"> Secateurs Folding Saw Garden Rake Garden Shovel Hedge Shear Lopper Telescopic Hedge Shear Telescopic Lopping Shear Tree Pruner Telescopic Steel Pipe & Fruit Picker Bag Sheep Shear <p>Garden Tools</p> <ul style="list-style-type: none"> Electric Pressure Washer Hedge Trimmer Lawn Mower (Electric, Petrol & Manual) Leaf Blower 	<p>Cultivators and Accessories</p> <ul style="list-style-type: none"> Petrol and Diesel <p>Sprayers and Accessories</p> <ul style="list-style-type: none"> Battery Sprayer Portable Power Sprayer Trolley Sprayer Manual Knapsack Sprayer Manual Pressure Sprayer Rose Cans Hose Crimping Machine HTP Sprayer HTP Delivery Hose HTP Hose Reel HTP Stand HTP Gun / Lance(Brass Rod) Knapsack Power Sprayer Mister / Duster / Granule Spreader HTP Sprayer Set with Diesel Engine HTP Sprayer Set with Kerosene Engine Fogging Machine <p>Milking Machine</p> <ul style="list-style-type: none"> Wood Shredder Fodder Ensiling Chaff Cutter Fodder Grinder Chaff Cutter Fodder Mini Chaff Cutter <p>Harvester</p> <ul style="list-style-type: none"> Maize Sheller Maize Sheller + Dehusker Maize Combine Harvester Onion Digger Carlotta Italy Tea Leaf Harvester Sugarcane Combine Harvester Sugarcane Leaf Stripper <p>Transplanter and Post Hole Digger</p> <ul style="list-style-type: none"> Paddy Transplanter (2 & 8 Rows) Transplanter-Vegetable & Tobacco Post Hole Digger(4” to 14” Augers)
--	--

No.	Parts name	No.	Parts name	No.	Parts name
2-01	Crank case Assy	2-27	Rotor	2-52	Shoe, clutch
2-01-1	Left case	2-28	Coil, ignition	2-53	Spring
2-01-2	Right case	2-29	Cap, plug	2-54	Bolt, clutch
2-01-3	Cover, crank	2-30	Grommet	2-55	Washer
2-02	Screw & washer	2-31	Stop wire	2-56	Washer
2-03	Bolt & washer	2-31-1	Stop switch	2-57	Case starter
2-04	Snap ring	2-32	Bolt & washer	2-57-1	Screw & washer
2-05	Gasket, crankcase	2-33	Plug, spark	2-58	Reel
2-06	Bearing, ball	2-34	Gasket, insulator	2-59	Spring
2-07	Oil seal	2-35	Insulator	2-60	Screw
2-08	Oil seal	2-36	Screw & washer	2-61	Guide
2-09	Clamp	2-37	Gasket, carburetor	2-62	Rope, starter
2-12	Cylinder	2-38	Carburetor assy	2-63	Knob, starter
2-13	Gasket, cylinder	2-39	Case, cleaner	2-64	Pulley, starter
2-14	Bolt, sch	2-39-1	Choke lever	2-65	Ratchet
2-15	Bolt, stud	2-40	Bracket	2-66	Spring, return
2-16	Cover, top	2-41	Screw & washer	2-67	Label, name
2-17	Screw & washer	2-42	Element, cleaner	2-68	Fuel tank
2-18	Cover	2-43	Cover, cleaner	2-69	Cap, fuel tank
2-19	Crank shaft assy	2-44	Screw & washer	2-70	Packing
2-20	Piston	2-45	O-ring	2-71	Seal washer
2-21	Pin, piston	2-46	Label, name	2-72	Long pipe, fuel
2-22	Ring, top	2-47	Gasket, muffler	2-73	Short pipe, fuel
2-23	Clip, piston pin	2-48	Muffler	2-75	Filter, fuel
2-24	Bearing, needle	2-49	Nut, flange	2-76	Screw & washer
2-25	Key, woodruff	2-50	Screw & washer		
2-26	Nut, conical spg	2-51	Clutch set		

Product	Agricultural Portable Sprayer (Power)	KisanKraft Invoice Date	
Brand	KisanKraft	KisanKraft Invoice No.	
Model	<input type="checkbox"/> KK-PPS-764B <input type="checkbox"/> KK-PPS-765B		
WARRANTY PERIOD	6-MONTHS	FOR THE SPECIFIED PERIOD FROM THE DATE OF SALE OR DELIVERY WHICHEVER IS EARLIER.	
Dealer's Invoice Date		Dealer's Invoice No.	
Buyer's Info (Name, Address, Phone, etc.):		Dealer's Stamp (Address, Phone, TIN, etc.):	
Buyer's Sign		Dealer's Sign	

Warranty Policy

What is covered: KisanKraft Limited and its manufacturers warrant this product to be free from defects in material or workmanship. All parts defective in material and workmanship are covered.

This warranty will only cover defects arising under normal usage.

This warranty is limited to repair or replacement by KisanKraft Limited or its manufacturers of such parts as appear to KisanKraft or its manufacturers, upon inspection, to be defective in material and/or workmanship. KisanKraft or its manufacturers make no warranty with respect to items not manufactured or sold by them. No onsite warranty is provided by KisanKraft Limited or its manufacturers. Defective items must be brought/sent to our Authorized Dealer or KisanKraft Limited's office for service.

What is not covered: The *warranty shall become null and void* and neither KisanKraft Limited nor any of its manufacturers, nor its authorized dealers assume any responsibility, if the failure was caused by the following:

(1) Operation of product with incorrect fuel or lubricants, (2) Incorrect usage of machine or misuse, (3) Lack of maintenance, (4) Negligence, (5) Accident or physical damage, (6) Repairs made by unauthorized parties and/or with unauthorized parts, (7) Improper set up, adjustments, tampering or altered products (8) Any modification to the product what-so-ever.

Important: (1) Normal maintenance and adjustments to the product is the responsibility of the customer. (2) Normal wear and tear are not covered under warranty. (3) Rubber/plastic parts and consumables such as blades, clutch and clutch-bell, sparkplugs, nylon line, air-filters, fuel-filters, oil seals and gaskets etc. are not covered under the warranty. (4) Electrical Motor, Electrical Parts, Battery Etc. are not covered under the warranty.

. This warranty is null & void, if you fail to register the warranty with KisanKraft by sending the KisanKraft Copy with dealer's stamp

Incidental / Consequential Loss: KisanKraft Limited or its manufacturers will not be liable for general damages, including bodily injuries, or for incidental or consequential damages including, but not limited to, loss of use, loss of profits, loss of production, expense of substitute equipment or other commercial loss or damage.

Limitation of Liability: This limited warranty is in lieu of all other express warranties, obligations, or liabilities. Any implied warranties, obligations, or liabilities, including, but not limited to, any implied warranty of merchantability shall be limited in duration to the applicable warranty period. Any action for breach of any warranties hereunder, including, but not limited to, any implied warranty of merchantability must be brought within the applicable warranty period.

Modifications of Warranty: No agent, representative, dealer, or employee of KisanKraft Limited or any of its manufacturers has the authority to increase or alter the obligations of this warranty.

Assignment / Transfer of warranty: The warranty cannot be assigned and shall not transfer if the product is resold by the first buyer. The above warranties are extended to the first end user (original purchaser), and no warranty is made, nor authorized to be made assignable on resale by the first end user.

What you must do to obtain limited warranty service: To obtain performance of any obligation under this warranty for failure during the applicable warranty period, you must deliver the defective product, to the nearest Authorized Dealer, along with proof-of-purchase (invoice/receipt). KisanKraft Limited, its manufacturers and its dealers reserve the right to inspect the claimed defective part(s) to determine if the malfunction is the result of a defect covered by this warranty. Please note that the decision of KisanKraft Limited with respect to any warranty claim is final.

After-sales Service (Including Warranty): KisanKraft Limited does not sell directly to consumers. All sales or supplies are made through Authorized Dealers. It is the responsibility of the Authorized Dealer to provide all after-sales service to consumers. Any warranty claim should be raised by dealer to KisanKraft Limited as per warranty policy.

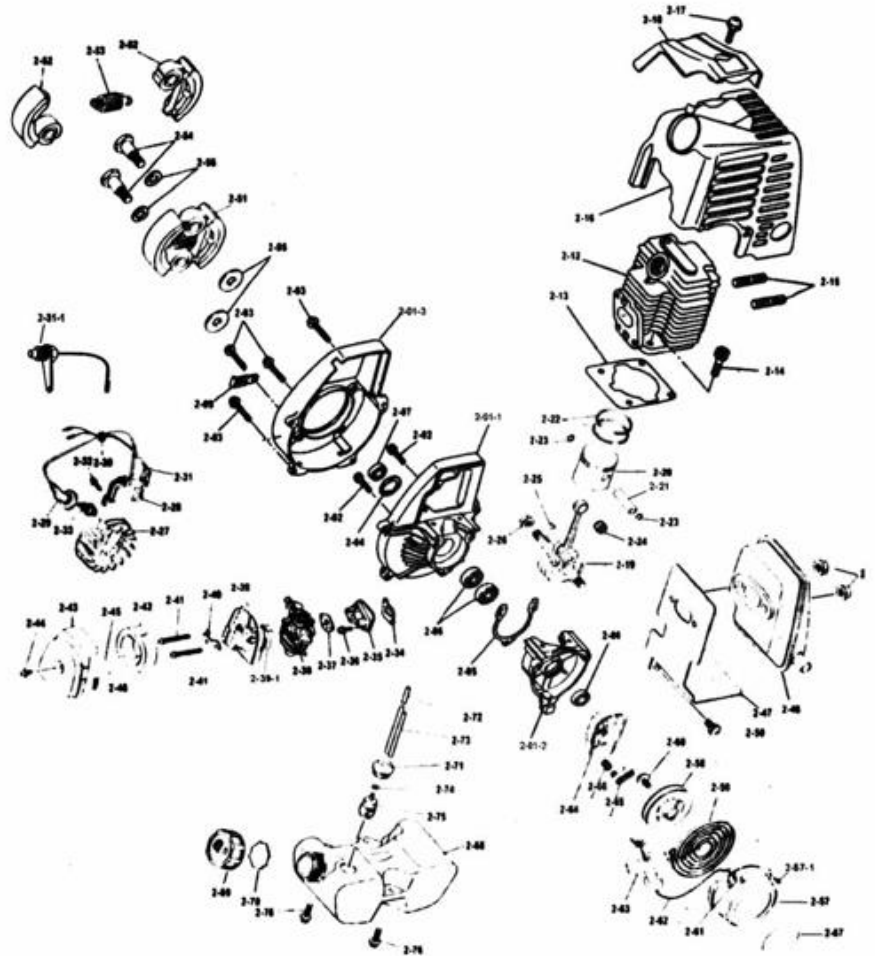
Jurisdiction: All disputes are subject to Bangalore court's jurisdiction.

Notes:

- This purchase is not contingent upon a product demonstration. The purchaser shall satisfy himself with the product, including any product demonstration or verification of any function, before buying. KisanKraft Limited or its authorized dealers, including online sellers, shall not be liable to give any on-site demonstration after purchase of any of the product.
- Any product once used will not be taken back by KisanKraft Limited.
- Warranty and After Sale Services (including but not limited to installation, Demonstration, Repair, Routine Maintenance etc.), should be done through the Authorized Dealer selling this product.
- Dealers should have their own technician to provide After Sales Services to their Customers. KisanKraft Limited provides free training to Authorized Dealer's technicians at KisanKraft Limited's head office, on request from Authorized Deale

. This warranty is null & void, if you fail to register the warranty with KisanKraft by sending the KisanKraft Copy with dealer's stamp

ENGINE PARTS-DIAGRAMPART DIAGRAM KK-PPS-P764B/765B



. This warranty is null & void, if you fail to register the warranty with KisanKraft by sending the KisanKraft Copy with dealer's stamp

3-41	Left pressure chamber	3-71	O-ring for piston 17x1.8
3-42	Left suction chamber	3-72	Packing seat
3-43	Left delivery chamber	3-73	O-ring 18x2.65
3-44	Suction joint	3-79	Grease cup
3-45	Hex bolt M6x73	3-80	Cap for grease cup
3-46	Pump delivery hose assy.	3-81	Valve assembly
3-47	Pump suction hose	3-81-1	Valve cage
3-48	Roller bearing	3-81-2	Valve spring
3-49	Pin	3-81-3	Valve plug
3-50	Pinion shaft	3-81-4	Valve seat
3-51	Ball bearing 6201	3-81-5	Valve ring
No.	Parts name		
3-81-6	Valve packing		
3-82	Hose clamp		
3-83	Metal plate washer		
3-94	Cap nut		
3-95	Regulating screw		
3-96	Adjusting pan		
3-97	Washer		
3-98	Nut		
3-99	Piston		
3-100	Gear box body		

. This warranty is null & void, if you fail to register the warranty with KisanKraft by sending the KisanKraft Copy with dealer's stamp

🌐: www.kisankraft.com ✉: info@kisankraft.com ☎: +91.80. 6835 7800

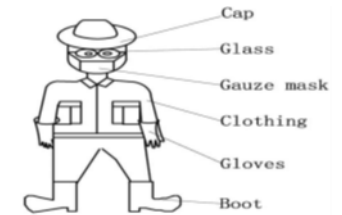
BEFORE GETTING STARTED

Please read and follow the instructions in this manual before using the machine. The user should be familiar with the safety notices, machine performance, and maintenance, etc. The operation manual will be used later in case of any repair, accessories replacement, and accessories procurement, so preserve it carefully.

SAFETY INSTRUCTIONS

- Using this machine with extra high pressure is prohibited ($\leq 35 \text{kgf/cm}^2$).
- The rotating parts should have a safety protective device.
- Protective Clothing:

- Wear flange cap.
- Wear dirt/fog-proof glasses.
- Wear gauze mask.
- Wear long gloves.
- Wear coats protect against poisons.
- Wear boots.



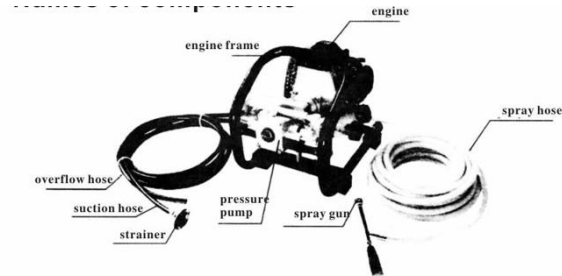
- Spraying towards personnel and working at the downwind position are prohibited.
- Running the machine without water or lubricating oil is prohibited.
- Using special working solutions such as strong acid, strong alkali, etc. is prohibited.
- Following personnel should not use the machine:
 - Mentally challenged.
 - Drunk.
 - Under the age of 18 or older people.
 - Person with no knowledge of machines.
 - Tired person or patient and others who cannot operate the machine normally.
 - A person who has just exercised strenuously or has not slept enough. Women feeding breast milk to the baby or is pregnant.
- Spraying
 - It is fine to carry out an operation during cool weather with little wind. For example, early in the mornings or in the late afternoons as this can reduce the evaporation and drift of chemicals and improve the protective effect.
 - The operator should move windward.
 - If your mouth or eyes are splattered with chemicals, wash them with clean water and then visit a doctor.
 - If the operator has a headache or dizziness, should stop working at once and consult a doctor immediately.
 - For the operator's safety, misting/dusting must be carried out strictly according to the instruction of the chemicals and agricultural requirements.

. This warranty is null & void, if you fail to register the warranty with KisanKraft by sending the KisanKraft Copy with dealer's stamp

🌐: www.kisankraft.com ✉: info@kisankraft.com ☎: +91.80. 6835 7800

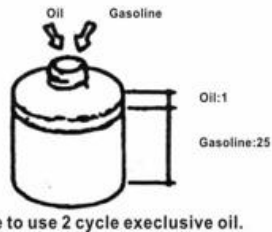
- Spray over, according to pesticide manual to clean out any residual spray mixture in chemical tank.
- After spraying always wash your hands and face thoroughly

PRODUCT COMPONENT

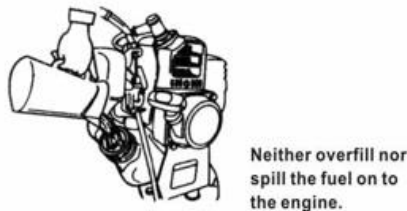


PRE-OPERATION PERPARATION

Oiling



Be sure of the engine stopped and cool.



Starting the Engine (Applicable for both the models):

Important: When starting the engine, be sure to fill the chemical tank with pure water or chemical liquid. Never run the engine when the chemical tank is empty.

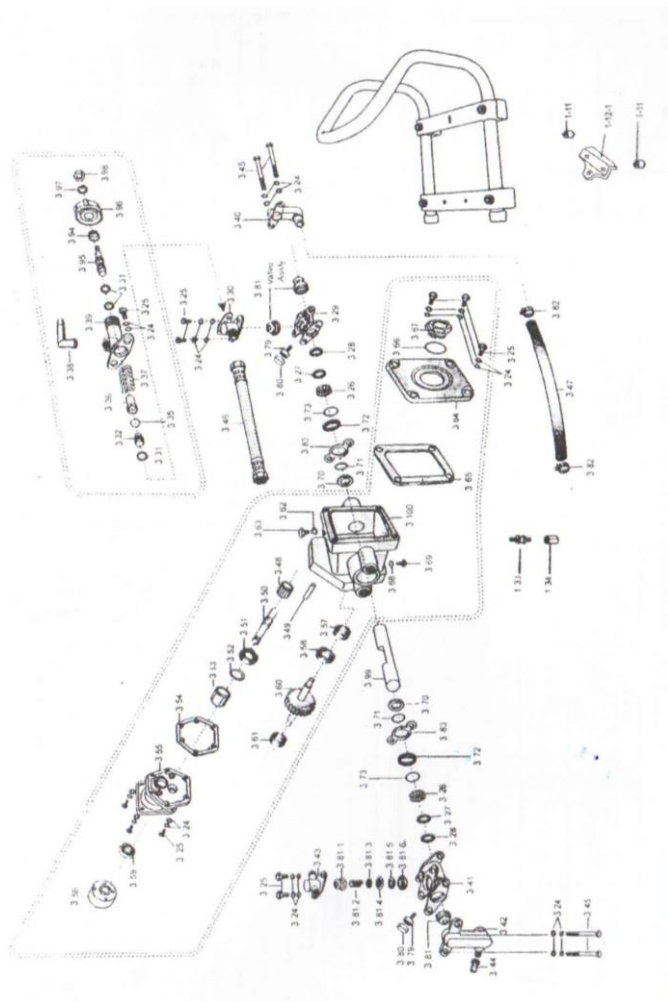
. This warranty is null & void, if you fail to register the warranty with KisanKraft by sending the KisanKraft Copy with dealer's stamp

PRESSURE PUMP PARTS-LIST

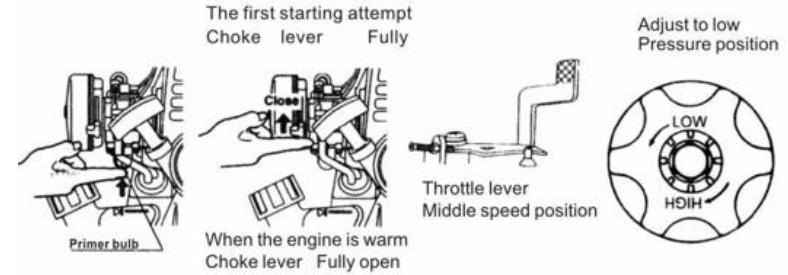
No.	Parts name	No.	Parts name
1-11	Shake-proof plug 6mm	3-52	O-ring 12x1.8
1-12-1	Fixing bracket	3-53	Bush
3-24	Washer	3-54	Gasket, upper case
3-25	Hex bolt M6x16	3-55	Upper case
3-26	Grease ring	3-56	Clutch drum
3-27	V-packing	3-57	Ball bearing 6200
3-28	Adjusting ring	3-58	Ball bearing 6203
3-29	Right pressure chamber	3-59	Oil seal for upper case
3-30	Right delivery chamber	3-60	Gear shaft
3-31	O-ring 10x1.8	3-61	Ball bearing 608
3-32	Valve seat	3-62	O-ring 12x1.8
1-33	Shake-proof plug 6mm	3-63	Oil inlet bolt
1.34	Pump bracket	3-64	Gear box cover
3-35	Ball valve	3-65	O-ring. gear box cover
3-36	Spring seat	3-66	O-ring.oil window 31x3
3-37	Spring	3-67	Oil window
3-38	Overflow joint	3-68	O-ring 6.3x1.8
3-39	Pressure regulating valve body	3-69	Oil outlet bolt
3-40	Right suction chamber	3-70	Oil seal for piston

. This warranty is null & void, if you fail to register the warranty with KisanKraft by sending the KisanKraft Copy with dealer's stamp

PRESSURE PUMP PARTS - DIAGRAM



1. Pump the primer bulb until fuel can be seen flowing through the fuel return line and pull the choke lever to full close. (During hot weather and when the engine is already warmed up, the choke lever may be set to either half open or full open).



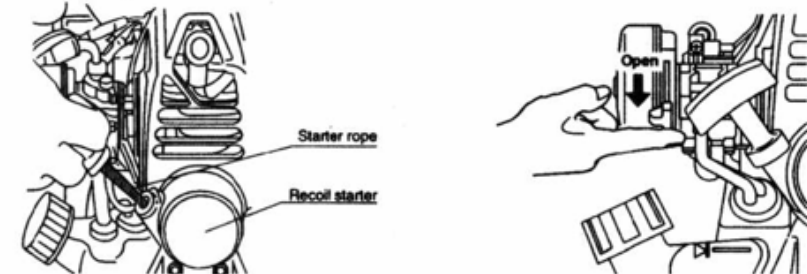
KK-PPS-

P764B/P765B:

2. Pull the recoil starter lightly 2-3 times.
3. Pull the recoil starter strongly to start the engine.
4. If the engine stops after a few revolutions, set the choke to half open, and pull the recoil starter rope strongly again to restart it.

Note: If the engine does not catch even after the starter is pulled several times, set the choke lever to full open and pull the starter rope. Be sure not to pull the starter lever out completely. After the engine starts, open the choke lever slowly, move the throttle lever to the low –speed side, and let the sprayer warm up for 2-3 minutes.

Pull briskly

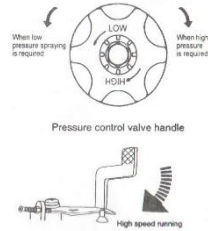


. This warranty is null & void, if you fail to register the warranty with KisanKraft by sending the KisanKraft Copy with dealer's stamp

. This warranty is null & void, if you fail to register the warranty with KisanKraft by sending the KisanKraft Copy with dealer's stamp

OPERATION (KK-PPS-P764B/P765B):

1. Turn the handle of the control valve to match the pressure of operating conditions.
2. Check spraying conditions and the status of the equipment and set the throttle lever to the high-speed position.
3. When the nozzle cock is opened, chemicals will be atomized as they come out of the nozzle.



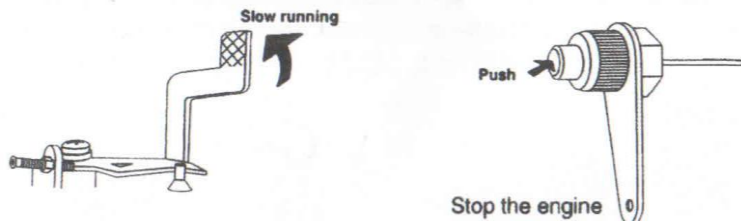
IMPORTANT

1. After each 4 continuous working hours, please turn the cap of grease cup for 1 or 2 rounds. This will lubricate the piston and prolong its life.
2. After every 100 working hours, please inspect the engine oil level in the pressure pump (you can see it from the oil window of the pump). In case the oil level is lower than 1/3 position, please remove the oil inlet bolt and add engine oil up to 2/3 position.
3. Be careful of the amount of fuel in the tank and refill it when it becomes low.

To Stop:

Temporary halt during operation:

1. Close the spray gun and return the throttle lever to low speed.
2. Press the engine stop button.
3. After the engine stops, close the fuel cock.



Stopping the sprayer after completing spraying:

1. Drain off all the chemicals from the chemical tank.
2. Fill the chemical tank with clean water, operate the engine, and clean the pump and hose interior by spraying the clean water.

. This warranty is null & void, if you fail to register the warranty with KisanKraft by sending the KisanKraft Copy with dealer's stamp

🌐: www.kisankraft.com ✉: info@kisankraft.com ☎: +91.80. 6835 7800

Inaccurate explosion	Carburetor not adjusted properly.	Adjust the carburetor gap properly
	Faulty spark plugs.	Replace the spark plug
	Faulty magneto or internal short	Replace the magnet
Engine doesn't sound right	Overheated cylinders	Replace the cylinder
	Overload operation	Right quantities of petrol and oil should be mixed to enable proper lubrication
	Faulty mixture or incorrect ratio	Replace the necessary spares/contact service person
Slow acceleration	Internal engine damage	Replace the necessary spares/contact service person
	Carburetor not adjusted properly or faulty compression	Adjust the carburetor gap properly
	Poor fuel oil quality	Use good quality fuel-oil mixture.
	Carbon pile up	Clean the carbon

. This warranty is null & void, if you fail to register the warranty with KisanKraft by sending the KisanKraft Copy with dealer's stamp

🌐: www.kisankraft.com ✉: info@kisankraft.com ☎: +91.80. 6835 7800

When engine fails to start:

Trouble		Cause	Remedy
There is fuel, but spark plugs fail to ignite.	There is power at the terminal.	Drawing too much fuel	Tuning the carburetor
		Faulty spark plug gap.	Adjust the spark plug gap
		Faulty spark plug insulation.	Replace the spark plug
	No power at the terminal	Faulty TCI unit or broken wire	Replace the ignition coil.
A break or short in the ignition coil.			
There is fuel and spark plug ignite	Compression is good	Bad Mixture	Adjust the carburetor
	Compression is bad	Faulty packing	Tighten the spark plug
		Spark plugs not tightened properly	Tighten the spark plug
		Piston rings are sticking	Replace the piston ring
No fuel in the carburetor		No fuel in the tank	Fill the tank with fuel
		Fuel valve is faulty, or fuel tank air vent is plugged.	Clear air vent hole
		Lines are bent	Replace lines

Engine fails to run smooth:

Trouble		Cause	Remedy
No power	Compression is good and there is no misfire	Air cleaner element is plugged up.	Clean or replace air cleaner if necessary
		Air has entered fuel line joints.	Clear the fuel line
		Faulty choke lever	Replace choke lever
		Carbon builds up on cylinder muffler.	Clean the muffler
	Compression is bad	Burnt spark plugs	Replace the spark plug
		Short in cable	Replace the cable
		Bad mixture or piston ring wear.	Replace the piston ring
Engine overheated		Marks on cylinder. Cracks in the piston head	Replace the piston
		Fuel is too low (mixture is too thin).	Engine over oiling.
		Faulty mixture, not enough mixture.	Clear the lines
		Carbon piled up, overloaded operation.	Clean the carbon
		Faulty spark plugs.	Replace the spark plugs
Plugged cylinder or coolant lines	Clean the coolant lines		

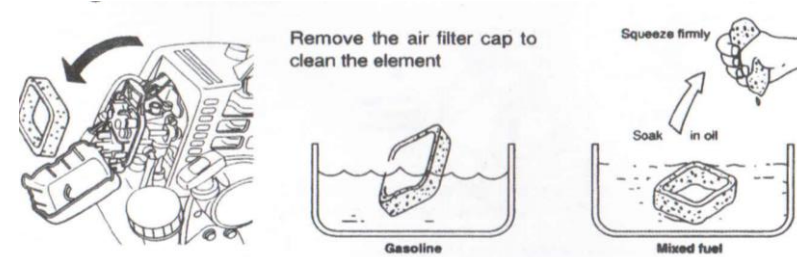
. This warranty is null & void, if you fail to register the warranty with KisanKraft by sending the KisanKraft Copy with dealer's stamp

Start the engine at just less than high speed for 15-20 seconds to spray out the water in the spray hose and nozzle. When water stops coming from the nozzle, turn off the engine at once.

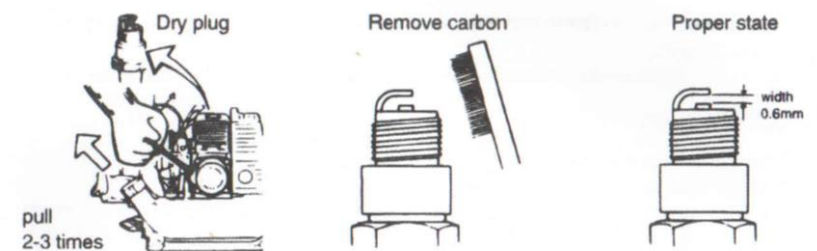
MAINTENANCE AND STORAGE

(Applicable for both the models)

Cleaning the air cleaner:



Plug:

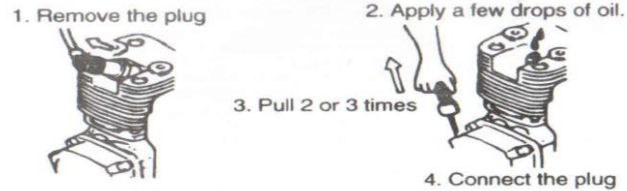


. This warranty is null & void, if you fail to register the warranty with KisanKraft by sending the KisanKraft Copy with dealer's stamp

Storage:

After using the sprayer for the season, store it until the next season of use as follows:

1. Drain off all fuel from the fuel tank and the carburetor.
2. Remove the spark plug and coat the cylinder with a small amount of oil. Pull the recoil starter lightly 2-3 times to spread the oil over the cylinder completely as shown in the figure below.



3. Pull the recoil starter out slightly and stop it in place where you feel the pull start (compression starts).
4. Clean the entire sprayer completely, cover it so it does not accumulate dirt and dust, and store it in a dry, cool location.

TECHNICAL SPECIFICATIONS

Model	KK-PPS-764B	KK-PPS-765B
CC	31	35.8cc
Bore x Stroke	39x26mm	
Comp Ratio	8.3:1	
RPM	6500	
Max Torque	1.1Nm	1.2Nm
Engine Type	4 – stroke	
Fuel Used	Unleaded Petrol	
Liquid Output	10W/30SAE	

Note: Specification can be changed without notice.

. This warranty is null & void, if you fail to register the warranty with KisanKraft by sending the KisanKraft Copy with dealer's stamp

🌐: www.kisankraft.com ✉: info@kisankraft.com ☎: +91.80. 6835 7800

TROUBLESHOOTING

Pump:

Trouble	Cause	Remedy
No Suction	Hose is Loose	Tighten the hose carefully
	Suction hose is clogged with chemicals.	Disassemble and clean the hose.
	Worn piston packing.	Replace with a new piston
	Foreign object in valve parts.	Disassemble and clean the valve.
Poor spray quality	Worn piston packing	Replace with a new piston
	Flaw in cylinder inner surface	Replace with a new cylinder
	Flaw in exhaust valve	Replace with a new valve
	Worn pressure control valve handle	Replace with a new handle
	Foreign object in valve parts	Replace with a new
	Worn nozzle hole.	Replace with a new nozzle.
	Too many nozzles attached	Reduce number of nozzles or replace with nozzle of smaller holes.

. This warranty is null & void, if you fail to register the warranty with KisanKraft by sending the KisanKraft Copy with dealer's stamp

🌐: www.kisankraft.com ✉: info@kisankraft.com ☎: +91.80. 6835 7800