

Incidental / Consequential Loss: KisanKraft Limited or its manufacturers will not be liable for general damages, including bodily injuries, or for incidental or consequential damages including, but not limited to, loss of use, loss of profits, loss of production, expense of substitute equipment or other commercial loss or damage.

Limitation of Liability: This limited warranty is in lieu of all other express warranties, obligations, or liabilities. Any implied warranty of merchantability shall be limited in duration to the applicable warranty period. Any action for breach of any warranties hereunder, including, but not limited to, any implied warranty of merchantability must be brought within the applicable warranty period.

Modifications of Warranty: No agent, representative, dealer, or employee of KisanKraft Limited or any of its manufacturers has the authority to increase or alter the obligations of this warranty.

Assignment / Transfer of warranty: The warranty cannot be assigned and shall not transfer if the product is resold by the first buyer. The above warranties are extended to the first end user (original purchaser), and no warranty is made, nor authorized to be made assignable on resale by the first end user.

What you must do to obtain limited warranty service: To obtain performance of any obligation under this warranty for failure during the applicable warranty period, you must deliver the defective product, to the nearest Authorized Dealer, along with proof-of-purchase (invoice/receipt). KisanKraft Limited, its manufacturers and its dealers reserve the right to inspect the claimed defective part(s) to determine if the malfunction is the result of a defect covered by this warranty. Please note that the decision of KisanKraft Limited with respect to any warranty claim is final.

After-sales Service (Including Warranty): KisanKraft Limited does not sell directly to consumers. All sales or supplies are made through Authorized Dealers. It is the responsibility of the Authorized Dealer to provide all after-sales service to consumers. Any warranty claim should be raised by the dealer to KisanKraft Limited as per warranty policy.

Jurisdiction: All disputes are subject to Bangalore court's jurisdiction.

Notes:

- This purchase is not contingent upon a product demonstration. The purchaser shall satisfy himself with the product, including any product demonstration or verification of any function, before buying. KisanKraft Limited or its authorized dealers, including online sellers, shall not be liable to give any on-site demonstration after purchase of any of the products.
- Any product once used will not be taken back by KisanKraft Limited.
- Warranty and After Sale Services (including but not limited to installation, Demonstration, Repair, Routine Maintenance etc.), should be done through the Authorized Dealer selling this product.
- Dealers should have their own technician to provide After Sales Services to their Customers. KisanKraft Limited provides free training to Authorized Dealer's technicians at KisanKraft Limited's head office, on request from Authorized Dealer.

This warranty is null & void, if you fail to register the warranty with KisanKraft by sending the KisanKraft Copy with dealer's stamp.

KisanKraft Limited

Product	AGRICULTURAL SELF-PRIMING WATER PUMP.	KisanKraft Invoice Date	
Brand	KisanKraft	KisanKraft Invoice No.	
Model	☐ KK-WPD-80		
WARRANTY PERIOD	6-MONTHS	FOR THE SPECIFIED PERIOD FROM THE DATE OF SALE OR DELIVERY WHICHEVER IS EARLIER.	
Dealer's Invoice Date		Dealer's Invoice No.	
Buyer's Info (Name, Address, Phone, etc.):		Dealer's Stamp (Address, Phone, TIN, etc.):	
Buyer's Sign		Dealer's Sign	

Warranty Policy

What is covered: KisanKraft Limited and its manufacturers warrant this product to be free from defects in material or workmanship. All parts defective in material and workmanship are covered.

This warranty will only cover defects arising under normal usage.

This warranty is limited to repair or replacement by KisanKraft Limited or its manufacturers of such parts as appear to KisanKraft or its manufacturers, upon inspection, to be defective in material and/or workmanship. KisanKraft or its manufacturers make no warranty with respect to items not manufactured or sold by them. No onsite warranty is provided by KisanKraft Limited or its manufacturers. Defective items must be brought/sent to our Authorized Dealer or KisanKraft Limited's office for service.

What is not covered: The *warranty shall become null and void* and neither KisanKraft Limited nor any of its manufacturers, nor its authorized dealers assumes any responsibility, if the failure was caused by the following:

- (1) Operation of product with incorrect fuel or lubricants,
- (2) Incorrect usage of machine or misuse,
- (3) Lack of maintenance,
- (4) Negligence,
- (5) Accident or physical damage,
- (6) Repairs made by unauthorized parties and/or with unauthorized parts,
- (7) Improper set up, adjustments, tampering or altered products
- (8) Any modification to the product what-so-ever.

Important: (1) Normal maintenance and adjustments to the product is the responsibility of the customer. (2) Normal wear and tear are not covered under warranty. (3) Rubber/plastic parts and consumables such as blades, clutch and clutch-bell, sparkplugs, nylon line, air-filters, fuel-filters, oil seals and gaskets etc. are not covered under the warranty. (4) Electrical Motor, Electrical Parts, Battery Etc. are not covered under the warranty.

Incidental / Consequential Loss: KisanKraft Limited or its manufacturers will not be liable for general damages, including bodily injuries, or for incidental or consequential damages including, but not limited to, loss of use, loss of profits, loss of production, expense of substitute equipment or other commercial loss or damage.

Limitation of Liability: This limited warranty is in lieu of all other express warranties, obligations, or liabilities. Any implied warranties, obligations or liabilities, including, but not limited to, any implied warranty of merchantability shall be limited in duration to the applicable warranty period. Any action for breach of any warranties hereunder, including, but not limited to, any implied warranty of merchantability must be brought within the applicable warranty period.

Modifications of Warranty: No agent, representative, dealer, or employee of KisanKraft Limited or any of its manufacturers has the authority to increase or alter the obligations of this warranty.

Assignment / Transfer of warranty: The warranty cannot be assigned and shall not transfer if the product is resold by the first buyer. The above warranties are extended to the first end user (original purchaser), and no warranty is made, nor authorized to be made assignable on resale by the first end user.

What you must do to obtain limited warranty service: To obtain performance of any obligation under this warranty for failure during the applicable warranty period, you must deliver the defective product, to the nearest Authorized Dealer, along with proof-of-purchase (invoice/receipt). KisanKraft Limited, its manufacturers and its dealers reserve the right to inspect the claimed defective part(s) to determine if the malfunction is the result of a defect covered by this warranty. Please note that the decision of KisanKraft Limited with respect to any warranty claim is final.

After-sales Service (Including Warranty): KisanKraft Limited does not sell directly to consumers. All sales or supplies are made through Authorized Dealers. It is the responsibility of the Authorized Dealer to provide all after-sales service to consumers. Any warranty claim should be raised by dealer to KisanKraft Limited as per warranty policy.

Jurisdiction: All disputes are subject to Bangalore court's jurisdiction.

Notes:

- This purchase is not contingent upon a product demonstration. The purchaser shall satisfy himself with the product, including any product demonstration or verification of any function, before buying. KisanKraft Limited or its authorized dealers, including online sellers, shall not be liable to give any on-site demonstration after purchase of any of the product.
- Any product once used will not be taken back by KisanKraft Limited.
- Warranty and After Sale Services (including but not limited to installation, Demonstration, Repair, Routine Maintenance etc.), should be done through the Authorized Dealer selling this product.
- Dealers should have their own technician to provide After Sales Services to their Customers. KisanKraft Limited provides free training to Authorized Dealer's technicians at KisanKraft Limited's head office, on request from Authorized Dealer.

Product	AGRICULTURAL SELF-PRIMING WATER PUMP.	KisanKraft Invoice Date	
Brand	KisanKraft	KisanKraft Invoice No.	
Model	☐ KK-WPD-80		
WARRANTY PERIOD	6-MONTHS	FOR THE SPECIFIED PERIOD FROM THE DATE OF SALE OR DELIVERY WHICHEVER IS EARLIER.	
Dealer's Invoice Date		Dealer's Invoice No.	
Buyer's Info (Name, Address, Phone, etc.):		Dealer's Stamp (Address, Phone, TIN, etc.):	
Buyer's Sign		Dealer's Sign	

Warranty Policy

What is covered: KisanKraft Limited and its manufacturers warrant this product to be free from defects in material or workmanship. All parts defective in material and workmanship are covered.

This warranty will only cover defects arising under normal usage.

This warranty is limited to repair or replacement by KisanKraft Limited or its manufacturers of such parts as appear to KisanKraft or its manufacturers, upon inspection, to be defective in material and/or workmanship. KisanKraft and its manufacturers make no warranty with respect to items not manufactured or sold by them. No onsite warranty is provided by KisanKraft Limited or its manufacturers. Defective items must be brought/sent to our Authorized Dealer or KisanKraft Limited's office for service.

What is not covered: The *warranty shall become null and void* and neither KisanKraft Limited nor any of its manufacturers, nor its authorized dealers assume any responsibility, if the failure was caused by the following:

- (1) Operation of product with incorrect fuel or lubricants,
- (2) Incorrect usage of machine or misuse,
- (3) Lack of maintenance,
- (4) Negligence,
- (5) Accident or physical damage,
- (6) Repairs made by unauthorized parties and/or with unauthorized parts,
- (7) Improper set up, adjustments, tampering or altered products
- (8) Any modification to the product what-so-ever.

Important: (1) Normal maintenance and adjustments to the product is the responsibility of the customer. (2) Normal wear and tears are not covered under warranty. (3) Rubber/plastic parts and consumables such as blades, clutch and clutch-bell, sparkplugs, nylon line, air-filters, fuel-filters, oil seals and gaskets etc. are not covered under the warranty. (4) Electrical Motor, Electrical Parts, Battery Etc. are not covered under the warranty.

This warranty is null & void, if you fail to register the warranty with KisanKraft by sending the KisanKraft Copy with dealer's stamp.

KisanKraft Limited



Wide Range of Products for Every Need



For more information give **MISSED CALL: 07676065555**



Many of our products have BIS: ISI certification.



User Manual



KisanKraft Limited

Warehouse: 818 3B1 to 818 3B18, Podalakur - Sangam Road, Prabagiripatnam, Podalakur, Nellore - 524345, Andhra Pradesh, INDIA

Head Office: #4, 1st Main, 7-A Cross, Maruthi Layout, Dasarahalli, HAF Post, Hebbal, Bangalore 560024, Karnataka, INDIA

- ◆ Bangalore (HO) ◆ Ahmedabad ◆ Bhopal ◆ Bhubaneswar ◆ Coimbatore
- ◆ Guwahati ◆ Hubli ◆ Hyderabad ◆ Jaipur ◆ Karnal
- ◆ Kolkata ◆ Lucknow ◆ Nellore ◆ Pune ◆ Raipur



Scan the QR code to download
KisanKraft App

App is available on Google Play



Scan the QR code for
KisanKraft Youtube Channel

YouTube

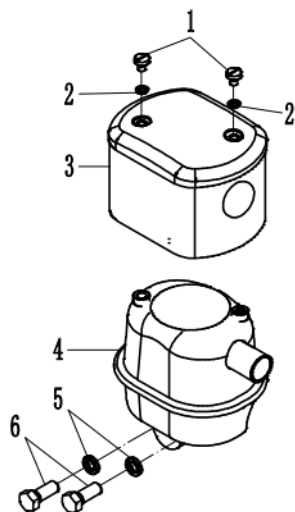
CONTENTS

CONTENTS.....	4
BEFORE GETTING STARTED	7
SAFETY INSTRUCTIONS.....	8
DIESEL WATER PUMP- STRUCTURE & INTRODUCTION.....	9
START DIESEL PUMPING UNIT.....	14
MAINTENANCE SCHEDULE:.....	20
TROUBLE SHOOTING.....	25
TECHNICAL SPECIFICATIONS.....	27
PART DIAGRAM KK-WPD-80.....	28

KisanKraft has a large range of products to serve the farmers. A list of our products is given below:

<p>Brush Cutters and Accessories</p> <ul style="list-style-type: none"> Brush Cutter/Power Weeder Backpack Brush Cutter Tea Pruner Pole pruner with Engine Reaper Attachment Blades-Circular Blades (2 &3 points) Baffle Nylon Rope Tap & Go <p>Chainsaws</p> <ul style="list-style-type: none"> Petrol Chainsaw Electric Chainsaw Chain Sharpening Machine <p>Engines and Water Pumps</p> <ul style="list-style-type: none"> Engine –Diesel-(Horizontal) Engine –Diesel(Vertical) Engine-Kerosene Water Pump with Petrol Engine Water Pump with Kerosene Engine Water Pump with Diesel Engine <p>Hand Tools</p> <ul style="list-style-type: none"> Secateurs Folding Saw Garden Rake Garden Shovel Hedge Shear Lopper Telescopic Hedge Shear Telescopic Lopping Shear Tree Pruner Telescopic Steel Pipe & Fruit Picker Bag Sheep Shear <p>Garden Tools</p> <ul style="list-style-type: none"> Electric Pressure Washer Hedge Trimmer Lawn Mower (Electric, Petrol & Manual) Leaf Blower 	<p>Cultivators and Accessories</p> <ul style="list-style-type: none"> Petrol and Diesel <p>Sprayers and Accessories</p> <ul style="list-style-type: none"> Battery Sprayer Portable Power Sprayer Trolley Sprayer Manual Knapsack Sprayer Manual Pressure Sprayer Rose Cans Hose Crimping Machine HTP Sprayer HTP Delivery Hose HTP Hose Reel HTP Stand HTP Gun / Lance(Brass Rod Knapsack Power Sprayer Mister / Duster / Granuel Spreader HTP Sprayer Set with Diesel Engine HTP Sprayer Set with Kerosene Engine Fogging Machine <p>Milking Machine</p> <ul style="list-style-type: none"> Wood Shredder Fodder Ensiling Chaff Cutter Fodder Grinder Chaff Cutter Fodder Mini Chaff Cutter <p>Harvester</p> <ul style="list-style-type: none"> Maize Sheller Maize Sheller + Dehusker Maize Combine Harvester Onion Digger Carlotti Italy Tea Leaf Harvester Sugarcane Combine Harvester Sugarcane Leaf Stripper <p>Transplanter and Post Hole Digger</p> <ul style="list-style-type: none"> Paddy Transplanter (2 & 8 Rows) Transplanter-Vegetable & Tobacco Post Hole Digger(4" to 14" Augers)
---	---

SILENCER



SL.NO.	CODE	DESCRIPTION	QTY
1	818-648	Seelig648	2
2	93-6	Rasher&	2
3	ORME-08300	Silencer limiting Fluent	1
4	OR168F-08100	Silencer folded Assembly	1
5	93-8	lasher8	2
6	5783-8*20	Bolt18*20	2

Product	AGRICULTURAL SELF-PRIMING WATER PUMP.	KisanKraft Invoice Date	
Brand	KisanKraft	KisanKraft Invoice No.	
Model	☐ KK-WPD-80		
WARRANTY PERIOD	6-MONTHS	FOR THE SPECIFIED PERIOD FROM THE DATE OF SALE OR DELIVERY WHICHEVER IS EARLIER.	
Dealer's Invoice Date		Dealer's Invoice No.	
Buyer's Info (Name, Address, Phone, etc.):		Dealer's Stamp (Address, Phone, TIN, etc.):	
Buyer's Sign		Dealer's Sign	

Warranty Policy

What is covered: KisanKraft Limited and its manufacturers warrant this product to be free from defects in material or workmanship. All parts defective in material and workmanship are covered.

This warranty will only cover defects arising under normal usage.

This warranty is limited to repair or replacement by KisanKraft Limited or its manufacturers of such parts as appear to KisanKraft or its manufacturers, upon inspection, to be defective in material and/or workmanship. KisanKraft or its manufacturers make no warranty with respect to items not manufactured or sold by them. No onsite warranty is provided by KisanKraft Limited or its manufacturers. Defective items must be brought/sent to our Authorized Dealer or KisanKraft Limited's office for service.

What is not covered: The *warranty shall become null and void* and neither KisanKraft Limited nor any of its manufacturers, nor its authorized dealers assumes any responsibility, if the failure was caused by the following:

- (1) Operation of product with incorrect fuel or lubricants,
- (2) Incorrect usage of machine or misuse,
- (3) Lack of maintenance,
- (4) Negligence,
- (5) Accident or physical damage,
- (6) Repairs made by unauthorized parties and/or with unauthorized parts,
- (7) Improper set up, adjustments, tampering or altered products
- (8) Any modification to the product what-so-ever.

Important: (1) Normal maintenance and adjustments to the product is the responsibility of the customer. (2) Normal wear and tear are not covered under warranty. (3) Rubber/plastic parts and consumables such as blades, clutch and clutch-bell, sparkplugs, nylon line, air-filters, fuel-filters, oil seals and gaskets etc. are not covered under the warranty. (4) Electrical Motor, Electrical Parts, Battery Etc. are not covered under the warranty.

Incidental / Consequential Loss: KisanKraft Limited or its manufacturers will not be liable for general damages, including bodily injuries, or for incidental or consequential damages including, but not limited to, loss of use, loss of profits, loss of production, expense of substitute equipment or other commercial loss or damage.

Limitation of Liability: This limited warranty is in lieu of all other express warranties, obligations, or liabilities. Any implied warranties, obligations or liabilities, including, but not limited to, any implied warranty of merchantability shall be limited in duration to the applicable warranty period. Any action for breach of any warranties hereunder, including, but not limited to, any implied warranty of merchantability must be brought within the applicable warranty period.

Modifications of Warranty: No agent, representative, dealer, or employee of KisanKraft Limited or any of its manufacturers has the authority to increase or alter the obligations of this warranty.

Assignment / Transfer of warranty: The warranty cannot be assigned and shall not transfer if the product is resold by the first buyer. The above warranties are extended to the first end user (original purchaser), and no warranty is made, nor authorized to be made assignable on resale by the first end user.

What you must do to obtain limited warranty service: To obtain performance of any obligation under this warranty for failure during the applicable warranty period, you must deliver the defective product, to the nearest Authorized Dealer, along with proof-of-purchase (invoice/receipt). KisanKraft Limited, its manufacturers and its dealers reserve the right to inspect the claimed defective part(s) to determine if the malfunction is the result of a defect covered by this warranty. Please note that the decision of KisanKraft Limited with respect to any warranty claim is final.

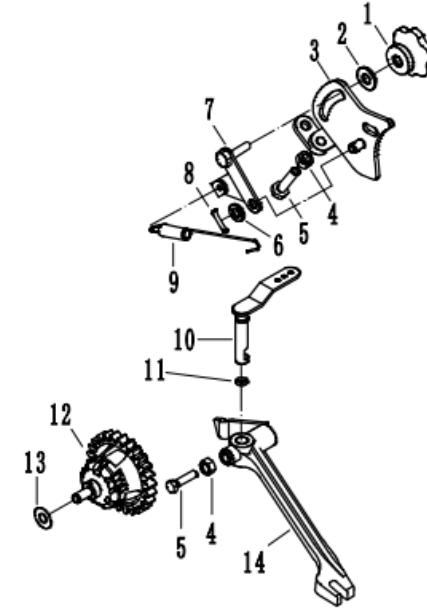
After-sales Service (Including Warranty): KisanKraft Limited does not sell directly to consumers. All sales or supplies are made through Authorized Dealers. It is the responsibility of the Authorized Dealer to provide all after-sales service to consumers. Any warranty claim should be raised by dealer to KisanKraft Limited as per warranty policy.

Jurisdiction: All disputes are subject to Bangalore court's jurisdiction.

Notes:

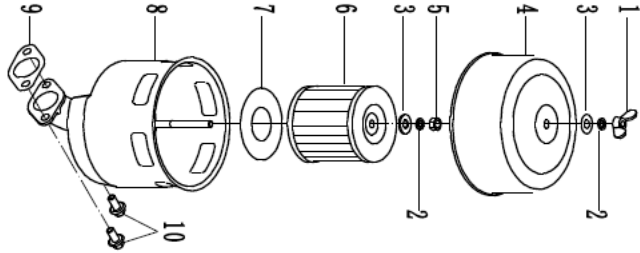
- This purchase is not contingent upon a product demonstration. The purchaser shall satisfy himself with the product, including any product demonstration or verification of any function, before buying. KisanKraft Limited or its authorized dealers, including online sellers, shall not be liable to give any on-site demonstration after purchase of any of the product.
- Any product once used will not be taken back by KisanKraft Limited.
- Warranty and After Sale Services (including but not limited to installation, Demonstration, Repair, Routine Maintenance etc.), should be done through the Authorized Dealer selling this product.
- Dealers should have their own technician to provide After Sales Services to their Customers. KisanKraft Limited provides free training to Authorized Dealer's technicians at KisanKraft Limited's head office, on request from Authorized Dealer.

GOVERNOR AND CONTROL SYSTEM



SL.NO.	CODE	DESCRIPTION	QTY
1	QR168F-11101	Activator handle	1
2	96-6	Washer6	1
3	QRI68F-11106	Speed adjustment system	1
4	6170-6	Nut II6	2
5	5783-6*25	Bolt116*25	2
6	97-6	Washer6	1
7	QR168F-11105	Handle Bracket	1
8	91-1.2*18	Pin 01.2*18	1
9	QR168F-11001	Governor Spring	1
10	QRI68F-11202	Lever Fork	1
11	3452.1-4.5*1.8	O-Ring4.5*1.8	1
12	QRI68F-11300	Activator spare parts	1
13	QRI68F-11315	activator rasher	1
14	QR168F-11201	Lever	1

AIR CLEANER ASSEMBLY



SL.NO.	CODE	DESCRIPTION	QTY
1	QR168F-07108	Nut 16	1
2	93-6	Pasher6	1
3	96-6	Washer6	3
4	QR168F-07101	Air Cleaner Cover Asset	1
5	6170-6	Nut 16	1
6	QR168F-07300	Air Cleaner Element Asses	1
7	QR168F-07102	Ring	1
8	QR168F-07111	Air Cleaner Bono' Case Asses	1
9	QR168F-07002	Air Cleaner Gasket	1
10	5787-6*12	Bolt16*12	3

Before Getting Started

Thank you for your purchase and use of our products. In order to avoid accidents or injury, please read this manual carefully before using the machine. After reading, preserve it for further reference.

Our centrifugal water pump is self-priming in nature and is characterized by light weight, simple structure high efficiency, convenient use and flexible movement. It can be used for agricultural irrigation, drainage construction and pumping, especially widely used in recurrent irrigation of small area for agricultural production at present. The water pump has wide application in different areas like agriculture, industry, fire control, construction fishery and gardening.

Please note that due to the continuous improvements, the actual product may vary from the product shown in this manual.

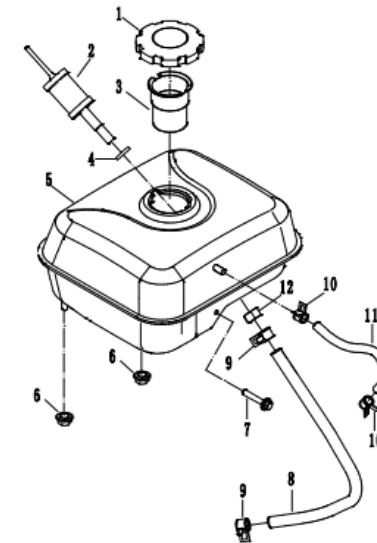
Notes during operation:

- The specified diesel fuel must be used. And the fuel must be clean.
- Different lubrication oils must be used for different seasons.
- And the oil quantity must be within the specification.
- The air filter must be clean all the time by cleaning the filter or replacing the filter element regularly.
- It must not be operated on when it exhausts dark smoke.
- Please read this manual carefully before operating this unit. It's useful for you to operate and maintain the diesel engine correctly so that the Pumping Unit works reliably.

Safety Instructions

1. Read the operation manual carefully before starting the engine in order to avoid any accident and damage.
2. Before starting the engine, make sure to do pre-check so as to avoid injury or damage to machine.
3. Please do not use this engine inside an enclosed area. Ensure adequate ventilation while Engine is in operation.
4. To prevent fire hazard, please keep the Engine in operation at least 1-meter (3 feet) away from Combustible or Inflammable materials, buildings and equipment.
5. For safety's sake, do not pump inflammable or corrosive fluid, such as acid. Likewise, do not pump dusty water, sea water, chemical or alkaline fluid, such as used oil, wine, or milk product.
6. When refueling you must STOP the Engine. Please do not smoke near Engine. Wipe the spilled fuel after refueling.
CAUTION: Spilled fuel is a fire hazard.
7. Always place the engine horizontally. Do NOT tilt the Engine more than 21 degrees. Overturning or inclining the engine may cause oil spillage and result in fire hazard.
8. Do NOT cover the Engine when in operation.
9. Children are strictly not allowed near the engine operation area.
10. Learn how to stop water pump immediately. It is prohibited to operate it without understanding the user manual.
11. Before operation, please perform Prepare and Operation to avoid incident. For safety reason,
12. Please don't pump the flammable or caustic liquid with Pumping Unit.
13. During operation, please put diesel on solid horizontal- If the Diesel Pumping Unit is placed inclined. or turned over, it may cause fuel to overflow.
14. To avoid fire, during operation the Pumping Unit must be kept at good ventilation and from building, wall, or others for at least 1 meter. Don't make tinder close to diesel.
15. Because of scald possibility caused by high temperature engine component, don't let child or animal enter work yard.
16. The operator must know how to stop the Diesel Pumping Unit quickly, operate the control device. No unauthorized operation is allowed.
17. The diesel is flammable and may blast under certain.
Fuel filling can only be performed after unit stops and at good ventilation. No smoking, flame, spark is allowed at fuel filling point. Don't let diesel overflow out of fuel tank. The fuel tank cover must be tightened after filling.
18. During filling, please don't spill diesel. The spilt diesel can be embazed. The split diesel must be cleaned before starting.
19. The diesel engine must be operated on a flat field. If its gradient is more than the limit, diesel may spill out.
20. Don't run Pumping Unit indoors or at bad ventilation place.
21. Otherwise, the poisonous gas CO in exhaust is fatal.

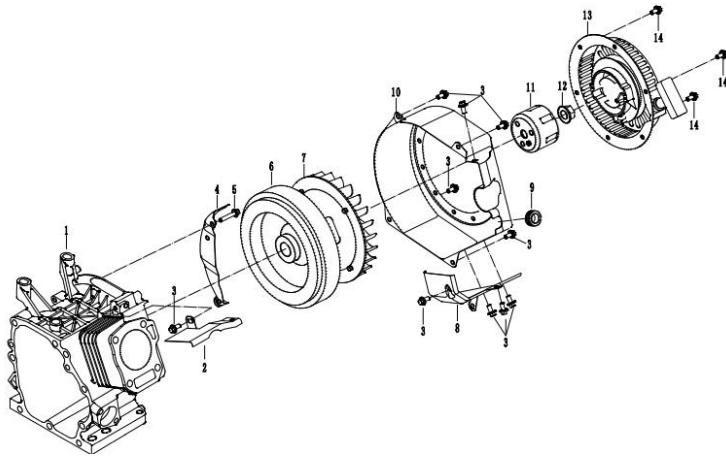
FUEL TANK AND FUEL ASSEMBLY



SL.NO.	CODE	DESCRIPTION	QTY
1	QR168F-10100	Fuel Tank Cap Assn	1
2	QR168F-10310	Filter Element Asset	1
3	QR168F-10002	Fuel Oil Filter	1
4	QR168F-10311	Fuel Oil Filter Gasket	1
5	QR168F-10200	Fuel Tank welded Assembly	1
6	6177-6	Nut 16	2
7	5787-6*25	Bolt16425	1
8	QR168F-10401	Fuel Oil Pipe	1
9	QR168F-10402	Clamp	2
10	QR168F-10603	Clamp	2
11	QR168F-10602	Fuel Oil Return Pipe	1
12	6176-10	Nut 110	1

SL.NO.	CODE	DESCRIPTION	QTY
1	QR168F-05011	Crank Shaft Tiling Gear	1
2	QR168F-05101	Cram Shaft	1
3	119-5;6	Pin5*6	1
4	1099-4#7.5 19	Key4*7.5*19	1
5	QR168F-05004	Fly Wheel	1
6	QR168F-02501	Fan	1
7	QR168F-12101	Starter Pulley	1
8	6177-18*1.5	Nut 1114*1.5	1

COOLING AND START SYSTEM

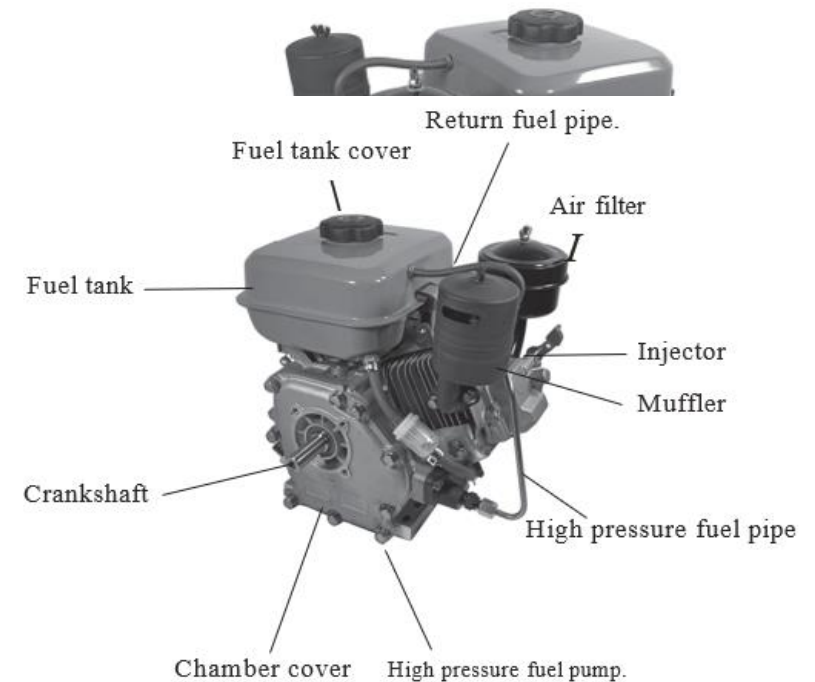


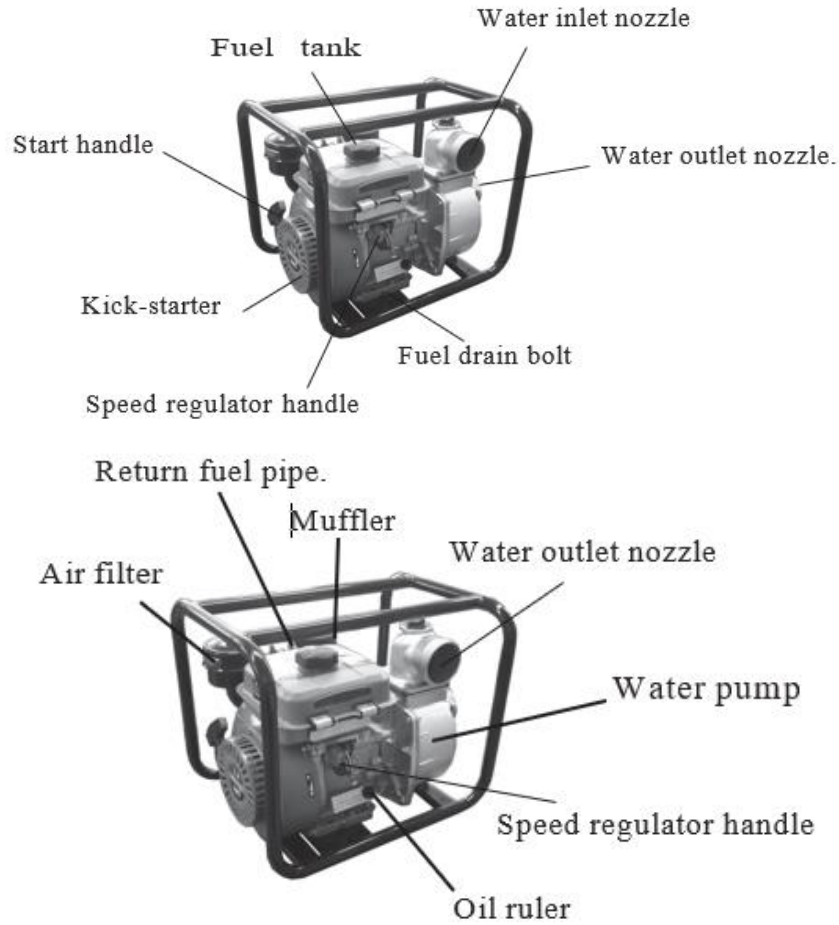
SL. NO.	CODE	DESCRIPTION	QUANTITIES
1	QR168F-01005	Cylinder Block	1
2	QR168F-02502	Up guide rind board	1
3	5787-6*12	Bolt116*12	10
4	QR168F-02505	Rear seal cover	1
5	5787-032	8o116*32	1
6	QR168F-05004	Fly Wheel	1
7	QR168F-02501	Fan	1
8	QR16BF-02506	Air Govern	1
9	QR168F-10014	Oil Pipe Clipper	1
10	QR168F-02504	Fan Case Welded Asser	1
11	QR168F-12101	Starter Pulley	1
12	6177-18*1.5	Nut 114*1.5	1
13	PR168F-12000	Recoil Starter Assembly	1
14	5787-6*8	Bolt16*8	3

To Ensure Safe Operation:

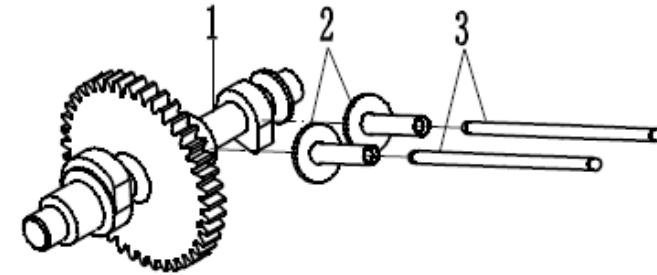
- When adding fuel to water pump, make sure it is far away from inflammables. Do not fill too much full in the fuel tank, i.e., till the neck of the fuel tank filling place. Put water pump on a level ground, so as to avoid diesel from spilling.
- Use clean fuel. Before usage, filter fuel or keep it for more than 24 hours. When machine is running, do not add fuel into fuel tank or add oil into crankcase.
- There is poisonous carbon monoxide in the emission gas, therefore, make sure use it in well-ventilated place, so as to avoid its influence on people or livestock.
- When the machine is in operation or had just finished operation and it is still hot, please do not touch the muffler and its cover.
- During the first 20 hours of usage and maintenance for the new machine, please run it with low speed and low load, rather than high speed and full load.

Diesel Water Pump- Structure & introduction



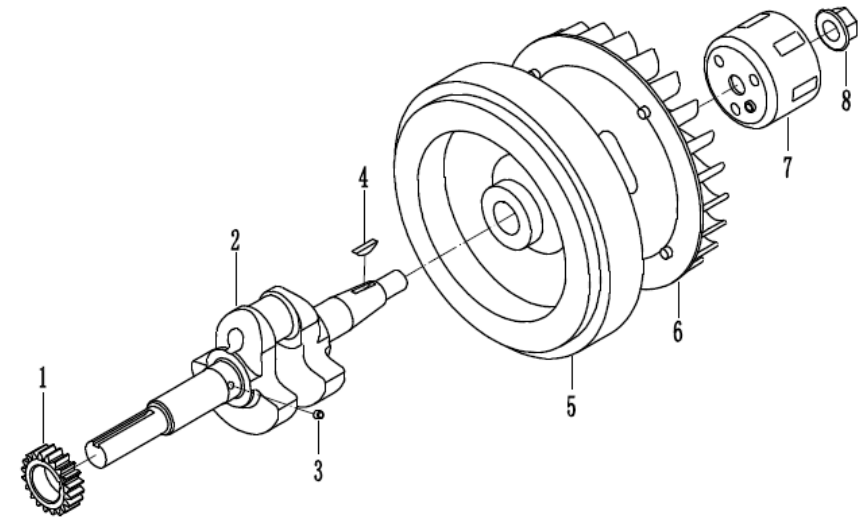


CAMF SHAFT ASSEMBLY

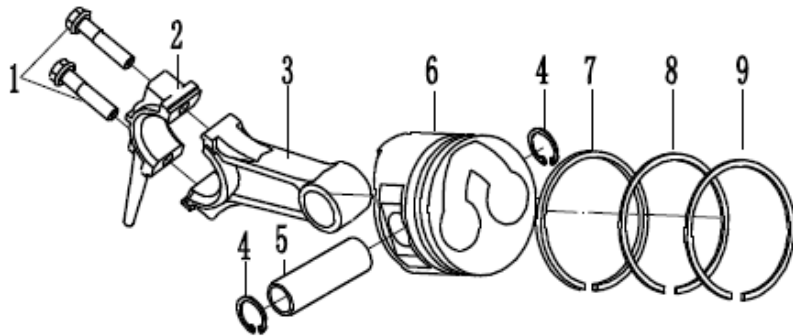


SL.NO.	CODE	DESCRIPTION	QTY
1	QR168F-04202	Camshaft	1
2	QR168F-06001	Vein Tappet	2
3	QR168F-06200	Valve Rod Assn	2

CRANK SHAFT FLY WHEEL ASSEMBLY



PISTON AND CONNECTING ROD



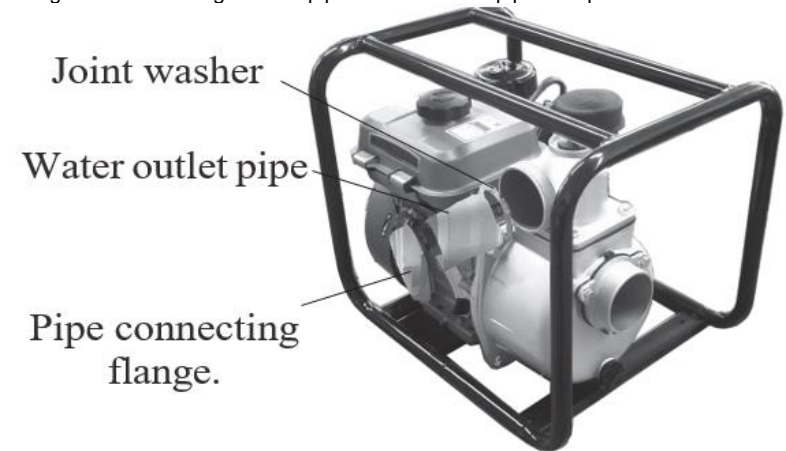
SL.NO.	CODE	DESCRIPTION	QTY
1	QR168F-04203	Rod Nut	2
2	QR168F-04202	Crank Pin Box	1
3	QR168F-04201	Connecting Rod Body	1
4	893.1-18	Tasher018	2
5	QR168F-04002	Piston Pin	1
6	QR168F-04001	Piston	1
7	QR168F-04110	Oil Ring Asset	1
8	QR168F-04102	Second Gas Ring	1
9	QR168F-04101	First Gas Ring	1

Prepare and Check before operation.

- Connect inlet water pipe.
- Connect water inlet pipe, pipe connector, and pipe clamp. The inlet pipe must be non-fold. Its length must be not more than the requirement. With less distance between water pump and water surface, the diesel pumping unit has better water sucking performance. The self-sucking timing is direct ratio with water pipe length.
- The filter for the water pump must be clipped into the end of the water inlet pipe with pipe connecting clamp, just as shown in figure 3.1.

NOTE Before drawing water, the filter must be installed into the end of the water inlet pipe. The filter can filter the sundries in water to avoid damage and block.

NOTE Loose water inlet pipe can cause bad water pump performance or failure of sucking water. Please tighten the pipe connector and pipe clamp.



WARNING

- Operating a water pump without a water filter will cause serious damage.
- Damages because of the non-water filter will not be covered in the warranty.
- Connect water outlet pipe.
- Connect water outlet pipe, pipe connector and pipe connecting flange.

NOTE Tighten pipe connecting flange so that water pipe doesn't lose at high temperature.

(Figure 3.2)

Filter



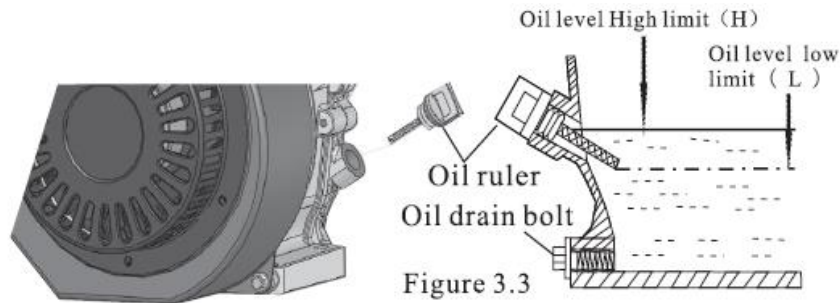
Figure 3.1

Check Oil level.

- Remove fuel tank cover and check the fuel level. If it's too low, please fill fuel.
- It's recommended to use O Diesel when it's above 5-degree, -10 Diesel when it's below 5 degrees.
- Mixture of Diesel and oil or dirt diesel is not allowed so that dust and water will not enter into fuel tank.

! WARNING

- Engine oil is one of the important factors that affect the performance and life of Diesel Pumping Unit. No dirt oil or rape oil is allowed.
- Engine oil level check can only be performed after the engine stops for more than 10 minutes on horizontal place.
- It's strongly recommended that different CD class diesel engine oil will be used at different ambient temperatures.
- (CD40 diesel engine oil can be used at more than 20 degrees; CD30 can be used for less than 20 degree)
- (The engine oil type is marked on the nameplate of tank.)
- Please choose the engine oil of appropriate viscosity according to the temperature.
- (1) Remove oil ruler and clean it.
- (2) Then plug the oil ruler into the oil filling port directly. No turning is accepted.
- (3) Take out oil ruler and check the oil trace. The oil trace must be between the high limit and low limit. Too much or too little are not allowed either.

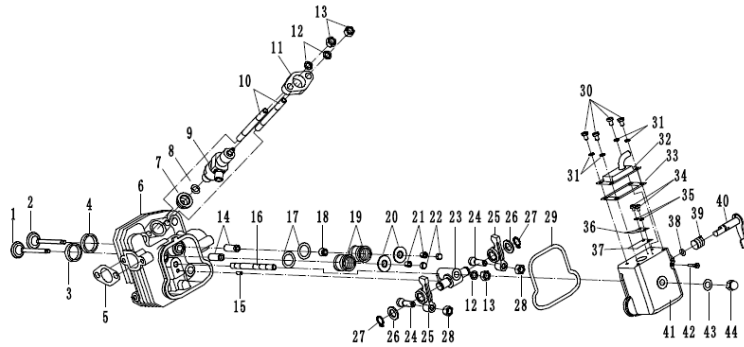


! WARNING

- Running with insufficient oil will cause fatal problem.

19	QR168F-03002	Valve Spring	2
20	QR168F-03003	Spring Retainer	2
21	QR168F-03004	Cotter	4
22	QR168F-03008	Valve Adjusting Plate	2
23	QR168F-03009	Rocker An Support	1
24	QR168F-03012	Valve Sete'	2
25	QR168F-03110	Valve Rocker Aril	2
26	QR168F-03101	Shake an washer	2
27	894.2-12	Shaft washer 12	2
28	6170-8	Nut if8	2
29	QR168F-03006	Bonnet Gasket	1
30	818-5*8	Bolt X5*8	4
31	93-5	Washer5	4
32	QR168F-03503	Press board	1
33	QR168F-03506	Gasket	1
34	818-3*8	Bolt W3*8	2
35	93-3	Washer3	2
36	QR168F-03505	Press board	1

Cylinder. Inner Head Assembly



SL.NO.	CODE	DESCRIPTION	Qty
1	QR168F-03001	Exhaust Valve	1
2	QR168F-03005	Intake Valve	1
3	QR168F-03303	Exhaust Valve Guide	1
4	QR168F-03304	Intake Valve Guide	1
5	QR168F-08001	Silencer Gasket	1
6	QR168F-03302	Cylinder Head	1
7	QR168F-03013	Spacer	1
8	QR168F-03014	Nozzle Gasket	1
9	QR168F-14000	Fuel Nozzle Assembly	1
10	QR168F-03015	Nozzle bolt	2
11	QR168F-03010	Nozzle Retainer	1
12	93-8	Washer	3
13	6175-8	Nut (long) 118	3
14	QR168F-03301	Valve Pipe	2
15	119-B4*10	Pin 4*10	1
16	QR168F-03011	Rocker Arm Bolt	1
17	QR168F-03016	Valve Spring Washer	2
18	QR168F-03007	Oil Seal	1

Check fuel level.

- Remove fuel tank cover and check the fuel level. If it's too low, please fill fuel.
- It's recommended to use 0 Diesel when it's above 5-degree, -10 Diesel when it's below 5 degrees.
- Mixture of Diesel and oil or dirt diesel is not allowed so that dust and water will not enter into fuel tank.

⚠ DANGER The diesel is flammable and may blast under certain.

- Fuel filling can only be performed after unit stops and at good ventilation. No smoking, flame, spark is allowed at fuel filling point.
- Don't let diesel overflow out of fuel tank. The fuel tank cover must be tightened after filling. (There should be no diesel-on-diesel filling port.)
- Be careful not to let skin contact diesel often, and not breathe diesel vapor.
- Please store diesel in places where children can't access it.

Fuel Tank volume:

- 168F 2.5 L
- 173F 4.0L



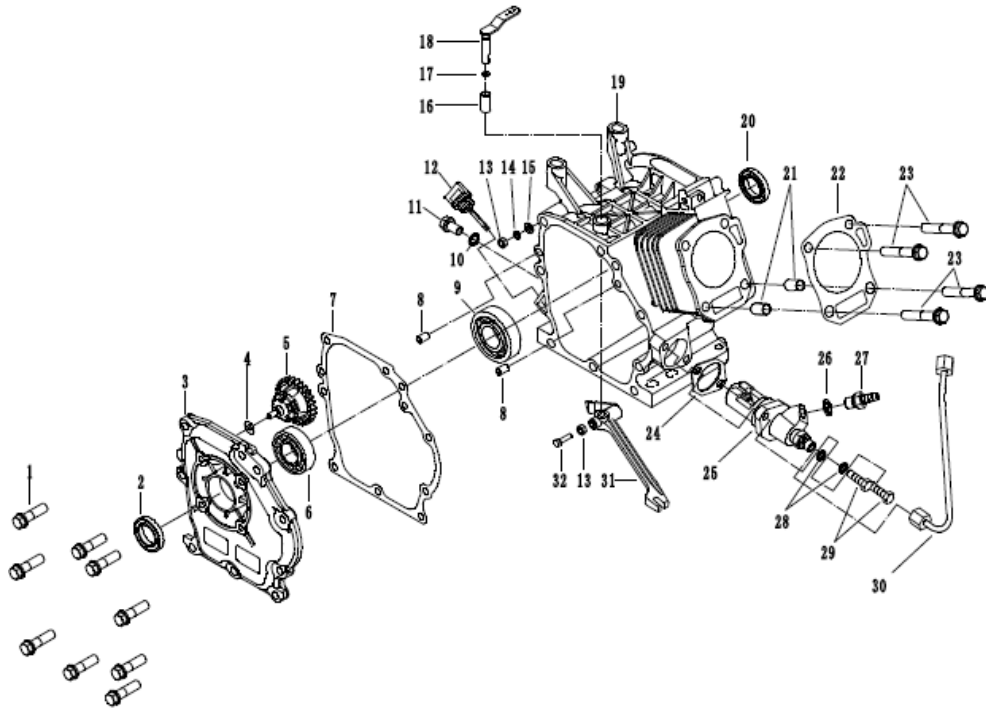
(Figure 3.4)

Start Diesel Pumping unit.

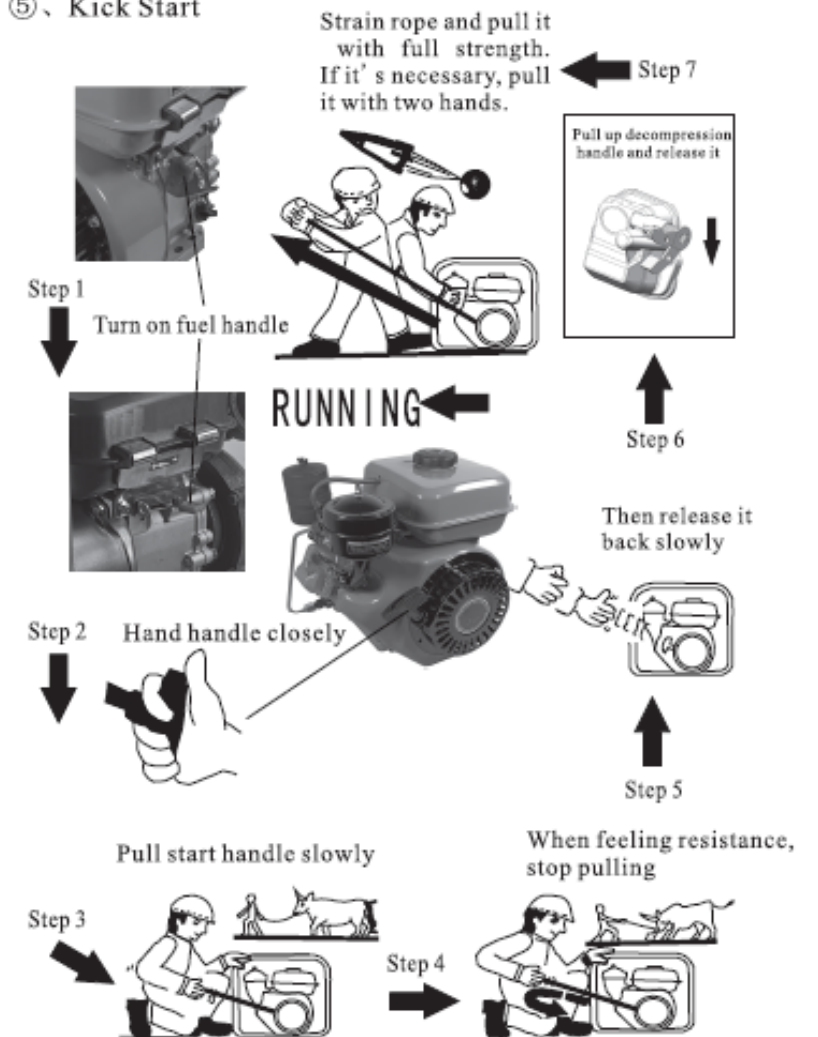
1. Turn on the fuel tank switch to discharge air in the fuel pipe.
2. Turn speed regulator handles to small fuel position.
3. Pull start handle till feeling resistance, then release it.
4. Pull decompression handle and release it, then hand start handles and pull start rope very fast.
5. (If it doesn't start, repeat above process)
6. It can be started only if the start rope is pulled out for more than 1 meter.
7. **NOTE** During the start when decompression plate is pulled up, release it. It will drop down automatically after pulling the start rope.
8. **NOTE** During the start, please don't pull the start rope with one hand, also pull decompression plate with the other hand.
9. **NOTE** Please don't let the start handle draw back to engine suddenly. It must be released by the return spring force of starter to avoid damage of starter.

NO	CODE	DESCRIPTION	QTY	NO	CODE	DESCRIPTION	QTY
1	5789-10*35	Bolt110*35	9	17	3452.1-4.5*1.8	O-Ring4.5*1.8	1
2	SG41.25*25*6-0013	(Front) Oil Seal 41.25*25*6	1	18	(18168F-11202	Lever Shaft	1
3	QR168F-01203	Crank Case Cover	1	19	QR168F-01005	Cylinder Block	1
4	QR168F-11315	activator washer	1	20	SG41.25*25*6-0014	(Behind the) Oil Seed 41.2926*B	1
5	QR168F-11300	Activator spare parts	1	21	QR168F-01041	Ping12*20	2
6	NJ205E	Ball Bearing NJ205E	1	22	QR168F-01003	Cylinder Head Gasket	1
7	QR168F-01009	Crank Case Gasket	1	23	QR168F-01002	Cylinder Head Stud	4
8	QR168F-01024	Ping8*12	2	24	QR168F-10004	Fuel injection Pump Gasket	1
9	6305	Ball Bearing6305	1	25	QR168F-13000	Fuel Injection Pump Assembly	1
10	QR168F-01010	Oil Plug seal Assn	1	26	QR168F-10405	Oil pipe Connection faster	1
11	16674-10*1.25*16	Bolt (10*1.25*16	1	27	QR168F-10404	Oil pipe Connection Bolt	1
12	QR168F-01205	Oli Filler Cap	1	28	93-8	Washer8	2
13	6170-6	Nut 16	2	29	5783-8*25	Bolt M8*25	2
14	93-6	Washer6	1	30	QR168F-10500	Fuel Injection Pipe Asses	1
15	97-6	Washer6	1	31	QR168F-11201	Lerer	1
16	QR168F-01008	Bushing	1	32	5783-6*25	Bolt M66*25	1

Cylinder block Assembly



⑤、Kick Start



Check air filter.

- Remove the rain cover, and check filter element to ensure it's clean and ok. If it's necessary, clean or replace the filter element.
- Check whether there is dust in the filter tank. If it is, please clean it.

NOTE

- Before filling water, don't try to operate the unit. Otherwise, it will overheat. Long time running without water may damage water pump washer. If water in pump is suck empty, it must be stop to cool pump and then fill water into it.

Check the water status of pump.

WARNING

- Before operation, the water pump must be filled with water fully.
- Before filling water, don't try to operate the unit. Otherwise, it will overheat. Long time running without water may damage water pump washer. If water in pump is suck empty, it must be stop to cool pump and then fill water into it.

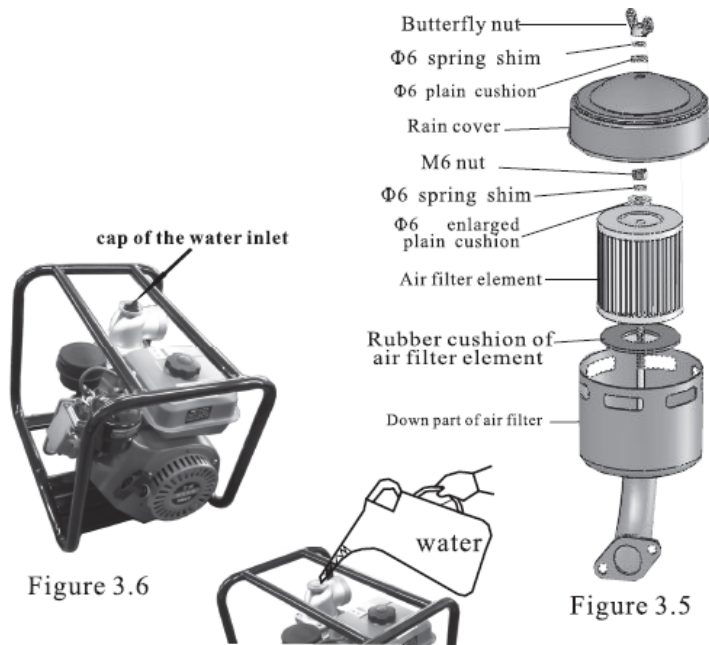
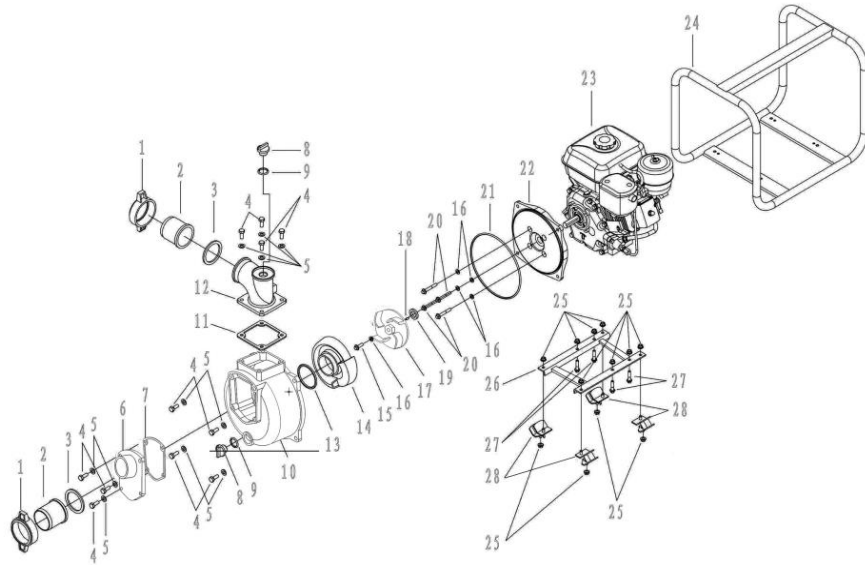


Figure 3.6

Figure 3.5

SL. No.	Part code	Part description	Qty
1	5015-51005	Input connector nut	2
2	5015-51004	Input connector	2
3	5015-51011	Suction port connector seal	2
4	5789-8-25	M8*25 Bolt M8*25	11
5	97-8	washer8	11
6	5015-51003	Suction port connector joints	1
7	5015-51012	Suction port connector joints washer	1
8	8012-51010	Water added port rubber plug	2
9	3452.1-25-5.3	25*5.3 O-Ring25*5.3	2
10	5015-51002	Pump	1
11	5015-51013	Discharge curve port washer	1
12	5015-51006	Discharge curve port	1
13	3452.1-56-6.3	56*6.3 O-Ring56*6.3	1
14	8012-51009	Aan pressure added cover	1
15	5787-8-35	M8*35 Bolt M8*35	1
16	97-8	Aluminium gasket8	5
17	5015-51008	Fan	1
18	1096-4.78-12	4.78*12 Key 4.78*12	1
19	8012-51100	Water seal parts	1
20	5787-8-30	M8*30 Bolt M8*30	4
21	3452.1-195-3.8	O-Ring195*3.8	1
22	5015-51001	Pump cover	1
23	QR168F	QR168F Diesel Engine	1
24	8012-55001	Frame	1
25	6177-8	M8 Nut M8	12
26	8012-55002	Engine rear shock absorber stay ;1	1
27	5789-8-35	M8*35 Bolt M8*35 4	4
28	10015-55005	Engine set shock absorber washer	4

PART DIAGRAM KK-WPD-80



Running of Diesel engine

1. Run engine free of load for 3 minutes to warm-up engine.
 2. Pull diesel engine fuel handle to the position corresponding to the required speed.
- Note:
- It must run for 3 minutes to warm-up. Otherwise, it may cause bush burning or scuffing of cylinder bore.
 - The engine speed must be controlled through the fuel handle.
 - The High-Speed Limit Bolt must not be loosened or re-regulated, it may modify the engine performance.

Check during operation.

- a. Whether there is abnormal noise, vibration?
- b. Whether the ignition is not good or over speed?
- c. The exhaust cooler after muffle is normal or not?(The normal color is French gray or black)

⚠ WARNING

- When the engine runs, the muffle is very hot. Be careful not to touch it.
- When the engine runs, please don't fill fuel.



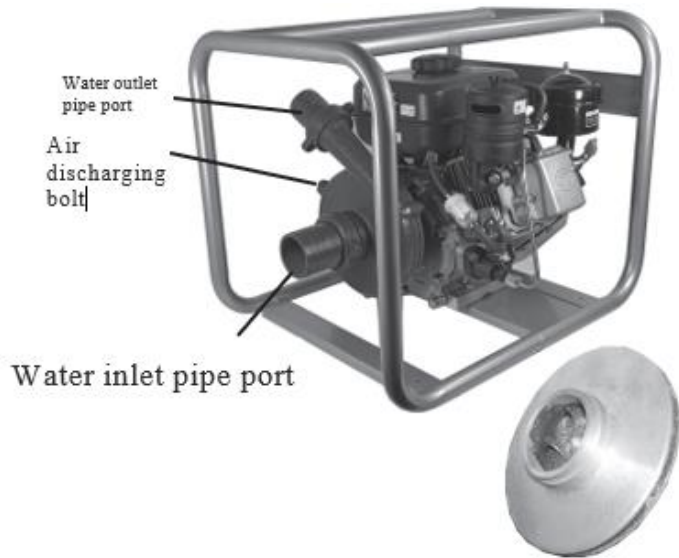
Fuel handle

High Speed limit bolt

Special Requirements of Centrifugal Pump

Usage of Centrifugal Pump

- Connect the water inlet pipe. There should be no air leakage and water leakage from pump to inlet water bottom valve. If there is leakage, it will affect the water performance of Centrifugal Pump. At worse condition it even causes it can't pump water.
- The water height must be not more than specified value, 7 meters.
- (3) Before pumping water, the water pump and inlet pipe must be filled with water. Then after connecting the outlet pipe, the pump can be started. It's ready to pump water.
- When filling water into pump, the inlet water bottom valve must be vertical downward. There is a one-way valve in the bottom valve. Only when it's vertical downward, it can be closed under the force of gravity. In such a condition, the filling water will not flow away.
- Only after the water pump and water inlet pipe 1s full of water, it can pump water.



Impeller of Centrifugal pump

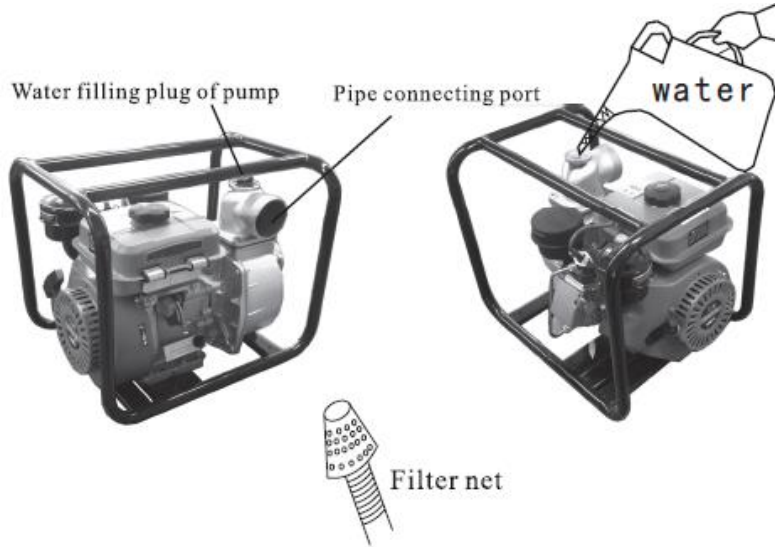
Technical Specifications

	Model	KK-WPD-80
water pump	Inlet	80 mm (3.1")
	Outlet	80 mm (3.1")
	Delivery Head:	18 m
	Discharge	416 LPM
	Suction (Vertical):	5 m
	Engine	Rated power
Rated Speed		3000 RPM
Displacement		196 cc
Oil Tank		0.7 L
Max Torque		9N.m/2500 RPM
Bore*Stroke		68*54 mm
Fuel tank capacity		3 L

Note: Technical specifications are subject to change without prior notice

Pump can't pump water.

- Check. Is it filled with enough water?



Check is the filter blocked?

Check is the pipe connector tightened?

Check is the water pipe broken? Is there a crack on the pipe?

Check is the pumping height too much.

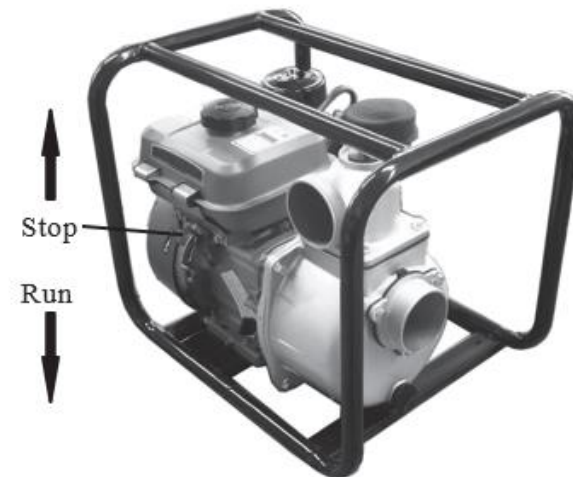
Check if the pump still can't pump water, please send it to the franchised dealer.

Stop

- Before stop unit, push the fuel handle to low-speed position. Then run it free of load.
- Push fuel handle to "STOP" position. It's shown in the picture.
- Pull out handle slowly still feeling the resistance (in such condition, it's at the TDC (Top Dead Center), inlet port and outlet port are closed both). Keep the handle in this position. It can prevent humid air entering.
- into cylinder causing the cylinder parts, for example cylinder sleeve rust.

NOTE

- When the stop unit, the load must be reduced gradually. It may cause temperature rising abnormally if it's stopped suddenly.
- Don't use the decompression handle to stop the unit.



Repair and Maintenance

To make the Pumping Unit work normally and extend its life, regular check and adjustment is necessary. Regular maintenance can extend the life of a unit. In the following table it lists the necessary check interval and required maintenance items.

Maintenance Schedule:

Regular maintenance period		Each time	First time or 20 hours	Every 3 month or 50 hours	Every 6 month or 100 hours	Every 1 year or 300 hours
Engine Oil	Check oil level	○				
	Replace oil		○		○ <small>The second time and after that.</small>	
Air filter	Check	○				
	Clean			○ (1)		○ (2)
Adjust Valve clearance			○		○	
Clean Combustion Chamber						
Fuel pipe	Replace every 2 years					
Check impeller						○
Water pump box cover						○
Check water inlet valve						○

NOTE

- If it's operated under worse condition, the maintenance frequency must be increased.
- Unless customer is qualified with professional skill and has the right tool, otherwise maintenance items must be performed by company franchised dealer

Trouble Shooting

Engine can't start :

- Check Whether the fuel is enough.
- Check Whether it's too cold (air temperature is less than 5 degree)

Fuel system problem

Fuel frozen

- Check Water in fuel.
- Check Injector problem.
- The check Injector doesn't inject or bad fuel supply.

Not enough pressure

- Cylinder head cover bolt is loose, or cylinder gasket is broken.
- Too many piston-ring, piston, cylinder sleeve worn.
- The piston ring has fallen or snapped.
- Bad airproof between valve and valve seat cause air leakage.

Clearance between intake valve and exhaust valve is wrong.

- Valve stem seizure
- After repairing valve seat for times, the compression ratio becomes too low.

Injection advance angle is wrong.

- Oil viscosity is too big. Too much load for flywheel turns.

NOTE when it's too cold to start the engine normally. 500ml (0.5L) boiled water can be used to pour on the right top of cylinder head cover. This is useful to start the engine. It's shown in the following picture.



Transportation & Storage

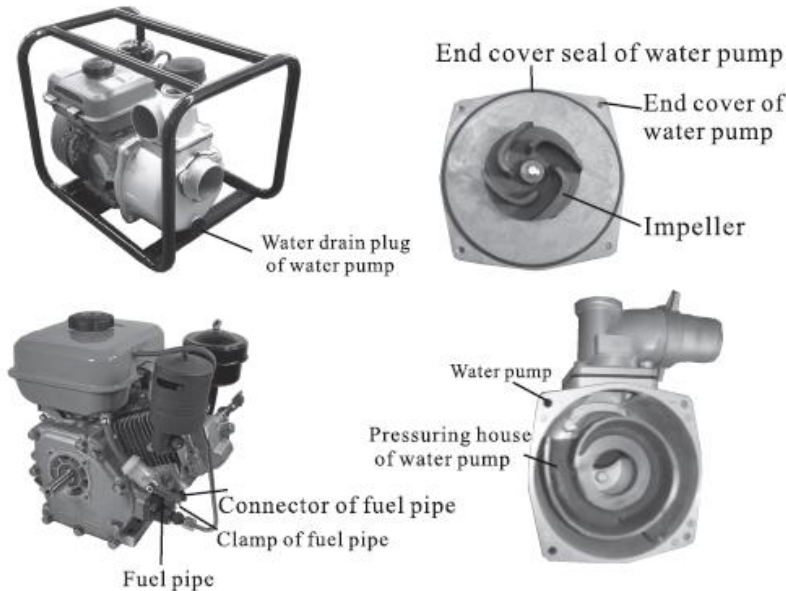
To avoid burning or fire, before storage or transportation, it must be cooled down.
Before long-term storage of diesel pumping unit, the following items must be met:

Clean the inner of diesel pumping unit.

If the diesel pumping unit is used to pump sand and sewage, there will be some sundries left in pump. So, before storage, the pumping unit must be cleaned by pumping clean water. Otherwise, the impeller may be damaged in the next operation. After cleaning, take off the drain plug to drain all the water in pump. Then install the drain plug.

Discharge fuel in fuel tank.

- Loose the fuel pipe connector to drain the fuel in fuel tank.
- Then tighten the fuel pipe connector.



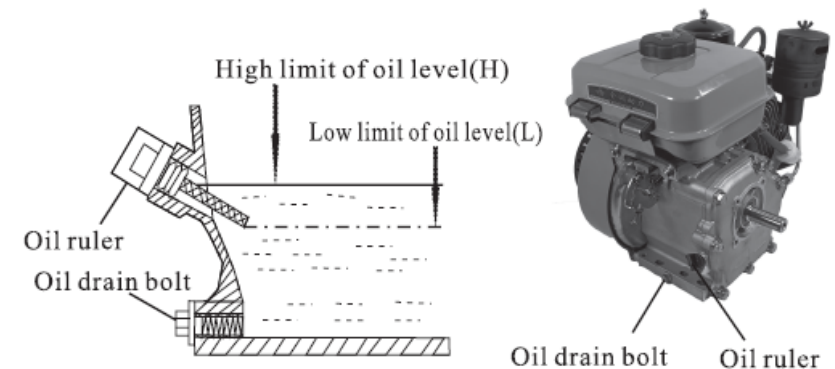
Replace engine oil:

When the engine is warm, the engine oil can be drained fast and completely.

- Remove the oil ruler and oil drain bolt, then drain the oil.
- Install oil drain bolt and tighten it.
- Re-fill clean oil till the specified oil level.
- Appropriate oil quantity must be filled into engine according to scale on oil ruler.

NOTE When filling oil, the specified oil type must be used (when it's above 20-degree, special oil for CD40 diesel must be used; when it's less than 20-degree, special oil for CD30 diesel must be used).

NOTE Clean water or soap must be used to clean hands after filling oil. Please protect the environment when dealing with waste oil. It's a tank to take the waste oil and send it to the waste disposal field or waste reclaim station after pressurized it. Please don't throw it in rubbish or pour it on the ground.



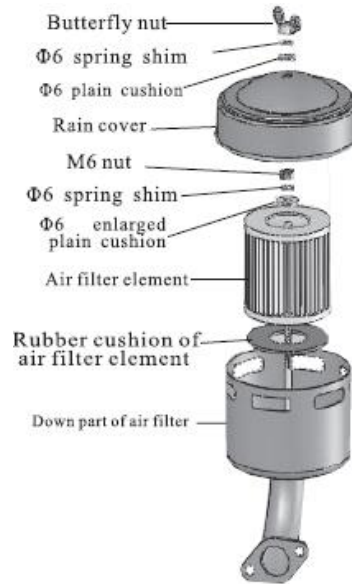
Maintenance of Air filter :

Dirt air filter will affect engine power, shorten its life. Please maintain the air filter regularly. In the worst condition, please increase the maintenance frequency.

Unit must be operated. Air filter. Running without air filter will fasten worn of unit.

Don' t operate Pumping Unit If dirt or dust enters into engine, it will cause fast worn of engine.

- Remove butterfly nut and rain cover to detach air filter. Check the two filters to see whether they are broken. If yes, please replace it with new filters.
- Foam filter element: clean with house washing solution (non-flammable solvent or high fire point solution can also be used) and warm water. Then rinse it completely. Dry the filter element after cleaning it, then saturate the filter element with clean oil and edge out the excrescent oil. It' s normal to exhaust blue smoke with the newly cleaned filter after start.
- Paper filter element: Tap the filter element on the hard surface slightly to get rid of the dust on the surface or blow with high pressure air flow from inside. Don' t clean with brush. Brush may thrust the dust into fibrin of element. If the filter element is dirty, please replace it.
- Re-cover the filter and rain proof cover.

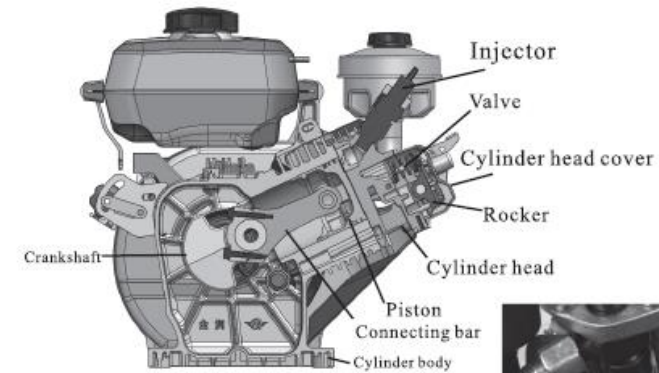


Valve clearance adjustment

- Remove the cylinder head cover.
- Pull up the start handle to make the piston at TDC, all exhaust valve closed.

NOTE TDC means that at this point, turning flywheel around should not make rocker move.

- Loose the valve adjusting lock nut of rocker.
- Insert a 0.15mm caliber gauge among valve and big end of rocker, and 0.2mm caliber gauge into exhaust valve and big end of rocker, turn around valve adjusting screw. After adjustment, turn the valve adjusting lock nut.
- Install Cylinder Head cover.



This figure shows the piston at TDC position.

